

产  
品  
手  
册  
P  
r  
o  
d  
u  
c  
t  
m  
a  
n  
u  
a  
l  
s

- **涂胶设备**  
Product glue
- **充磁设备**  
Magnets magnetized
- **工业机器人**  
Industrial robot
- **电声自动化**  
Electroacoustic automation

**久巨—做进口设备的替代者！**  
Jiuju - do import equipment replacement!



**服务热线：400-777-9399**

<http://www.jiujuok.com>

**深圳市久巨工业设备有限公司**  
Shenzhen jiuju industrial equipments co. LTD



## 公司简介 Company profile

深圳市久巨工业设备有限公司（简称：久巨设备），座落在改革开放的前沿城市—深圳，是一家集研发，制造及销售于一体的国家高新技术企业。公司着重技术与创新，拥有一批经验非常丰富的研发及技术工程师，并成立了自己的实验室，配备有现代化的办公及研发基地并取得100多项技术专利。产品主要定位于电子、通讯及五金行业设备的开发及应用，在自动涂胶、磁性材料磁化、工业机器人、电声自动化装配等领域应用非常广泛。产品在实际应用中，获得客户的高度认可，并与世界500强企业进行深度合作如：华为，富士康，三星等。正是因为有这些客户的高标准、严要求，促使我们严格把控产品品质，加强企业自身管理及人才培育，并先后导入ISO9001质量管理体系，荣获中国自主创新品牌，中国重合同，守信任的企业称号。

公司全体人员怀着以实现做进口设备的替代者，成为世界一流的设备制造商为企业愿景。围绕着成就客户，让每一位使用我们产品的客户感到骄傲的企业使命。为客户，员工及合作伙伴创造价值，为企业的永续经营不懈努力的核心价值观。齐心协力，用心耕耘，不忘初心，牢记使命，做好每一个产品，服务好每一位客户，让我们在未来的道路上实现价值，创造共赢。

Shenzhen Jiujie Industrial Equipment Co., LTD. (hereinafter referred to as "Jiujie equipment"), located in the frontier city of reform and opening up -- Shenzhen, is a national high-tech enterprise integrating R&D, manufacturing and sales. The company focuses on technology and innovation, has a group of experienced R&D and technical engineers, and established its own laboratory, equipped with modern office and R&D base. The products are mainly positioned in the development and application of electronic, communication and hardware industry equipment, and are widely used in the fields of automatic gluing, magnetic material magnetization, industrial robot, electro-acoustic automatic assembly and so on. In practical application, our products have been highly recognized by customers, and we have conducted in-depth cooperation with Fortune 500 enterprises, such as Huawei, Foxconn and Samsung. It is precisely because of the high standards and strict requirements of these customers that we strictly control product quality, strengthen enterprise management and talent cultivation, and have introduced ISO9001 quality management system, won the title of China independent innovation brand, China heavy contract, keep the trust of the enterprise and obtained more than 100 technical patents.

All staff of the company cherish the vision of becoming a world-class equipment manufacturer as a substitute for imported equipment. Around the achievement of customers, let every customer use our products proud of the mission of the enterprise. The core values of creating value for customers, employees and partners, and making unremitting efforts for the sustainable management of the enterprise. Make concerted efforts, work hard, never forget the original intention, remember the mission, do a good job in every product, serve every customer, let us in the future road to achieve value, create a win-win situation.

## 做进口设备的替代者 Substitute for imported equipment



厂房  
workshop



前台  
Front desk



研发  
Research and development



车间  
workshop





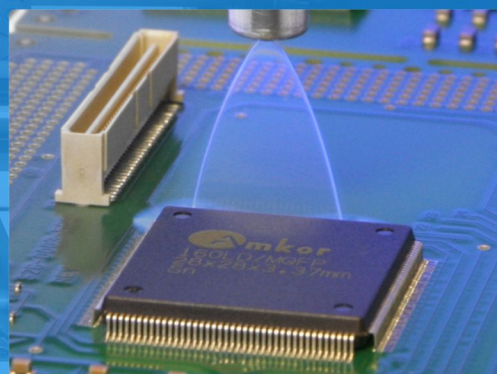
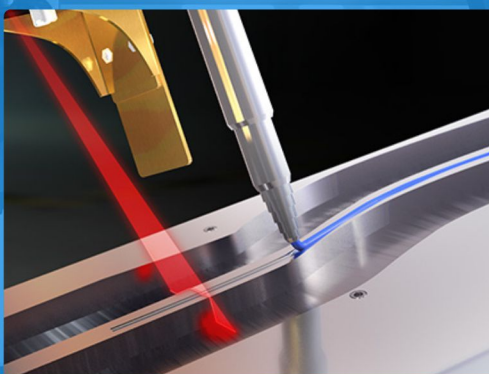


## 涂胶设备

Coating equipment

应用于各种流体喷、涂、点、灌的控制

It is applied to the control of spray, coating, spot and irrigation of various fluids



—做进口设备的替代者—

—Be a substitute for imported equipment—

全国服务热线：400-777-9399

Nationwide service hotline: 400-777-9399



## 桌面型二轴机械臂

Tabletop type two-axis mechanical arm

### 产品概述：

Product description  
椭圆跑道型点胶机采用二维点胶控制系统，自主编写程序，界面简洁，操作简单。根据产品形状（圆、椭圆、跑道）、大小输入产品参数即可完成编程，取代原始手工画胶，更高效，性能优越，工作稳定。

Elliptic runway dispensing machine adopts two - dimensional dispensing control system, independent programming, simple interface, simple operation. According to the product shape (circle, ellipse, track), size input product parameters can complete the programming, replace the original manual painting glue, more efficient, superior performance, stable work.

### 产品应用：

Applications  
主要应用于单、双组份丙烯酸酯胶、聚氨酯型粘合剂、厌氧胶、UV胶等胶水的控胶点胶。

It is mainly used in controlling and dispensing of single and two-component acrylate adhesive, polyurethane adhesive, anaerobic adhesive and UV adhesive.

### 行业应用：

Industry application  
电声行业、电感行业、通讯行业、电子、光学等。  
Electroacoustic industry, inductance industry, communication industry, electronics, optics and so on

## 产品参数

产品名称 Product name	桌面型二轴机械臂 Tabletop type two-axis mechanical arm
型号/规格 Model/specification	DC-1000
产品编号 Product number	128950
可搭载 Capable of carrying	针筒、点胶阀....或订制 Needle cylinder, dispensing valve... Or custom
核心部件 The core components	进口步进电机，PLC核心控制主板，中英文液晶显示文本，高精进口控压器件 Imported stepping motor, PLC core control motherboard, Chinese and English liquid crystal display text, high precision imported voltage control device
信号交互 Signal interaction	ERP/ MES /IO
适用产品规格 Applicable product specifications	≤Φ150mm，高度≤100mm 载重：2kg Φ 150 mm or less, height 100 mm or less load; 2 kg
适用胶水粘度 Applicable glue viscosity	≤150000CPS
电机速度 Motor speed	≤600RPM
重复精度 Repeat accuracy	±0.01mm
时间范围 Time range	0-99.99s
调节方式 Adjust the way	三维精密丝杆调节，文本按键参数设定输入 3 d precision screw adjustment, text key parameter setting input
工作环境 Working environment	电压：AC220V/50HZ/150W 气压：0.4-0.8MPa Voltage: AC220V/50HZ/150W pressure: 0.4-0.8mpa
外形尺寸/重量/运行噪声 Overall dimension/weight/running noise	长*宽*高：490mm*385mm*365mm；重量：21KG 噪声≤60dB Length * width * height: 490mm*385mm*365mm; Weight: 21KG noise ≤60dB



椭圆灯柱点胶  
Elliptic lamp-post dispensing



椭圆金属点胶  
Elliptical metal dispensing



椭圆饰品点胶  
Apply glue to oval ornaments



椭圆喇叭点胶  
Glue the oval horn



椭圆音箱点胶  
Elliptic speaker dispensing



椭圆包装点胶  
Elliptic packaging dispensing



UV胶  
UV glue



红胶  
red glue



环氧树脂  
epoxy resin



颜料  
pigment



硅胶  
silica gel



快干胶  
dry glue





 **400-777-9399**

**深圳总部**

地址：深圳市宝安区沙井街道后亭社区巨基科技工业园B栋  
☎ 0755-29351099 ☎ 0755-29351799 ☐ 13428976919  
✉ email@szjiuju.com 🌐 www.jiujujuk.com 📠 38195027

苏州分公司

地址：江苏省苏州市高新区华山路105号

☎ 400-777-9399

☐ 13823714281

青岛分公司

地址：山东省青岛市红岛经济开发区 出口加工区

☎ 400-777-9399

☐ 18002556337

中山分公司

地址：中山市三角镇金煌路7号

☎ 400-777-9399

☐ 13827468182

香港分公司

地址：香港中环德辅道中161-167号香港贸易中心3楼301-7

☎ 400-777-9399

☐ 13826563476

厦门分公司

地址：厦门市同安工业集中区思明园100号

☎ 400-777-9399

☐ 13823541479

广州分公司

地址：广州市大学城青蓝街10号国家数字研究基地A601

☎ 400-777-9399

☐ 18823789061