

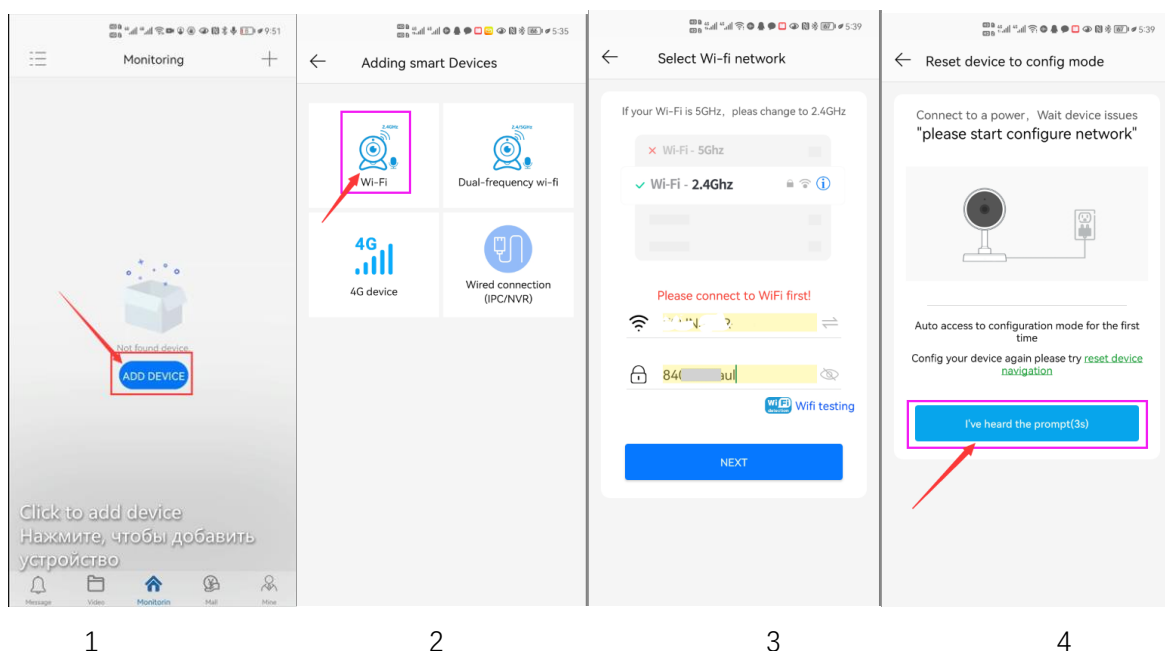
AC18Pro IP Camera Manual

[Part 1: Connect and manage cameras using mobile APP]

Please go google play or Apple store download mobile APP,the name is AC18Pro and install it into your mobile phone The first time you run the APP, you need to register an account. You can use your email or mobile phone number to register an account, and then use the registered account to log in to the APP.

[1], Configure the camera using WIFI

1. If your camera has WIFI function. Before connecting the power adapter of the camera, please make sure that the LAN port of the camera is not connected to the Ethernet cable (if you have connected it, please disconnect it and press the reset button for 5 seconds to restore the camera to factory settings). After connecting the power, wait 10 seconds.
2. Before using the mobile APP to configure the camera, please connect your mobile phone to your WIFI router via WIFI.
3. Open the APP and click the Add button to add a camera (as shown in Figure 1). And select WIFI (as shown in Figure2), the software will automatically obtain the WIFI of the mobile phone, and please enter the WIFI password (the WIFI connection password of the wireless router). Click Next (as shown in Figure 3)



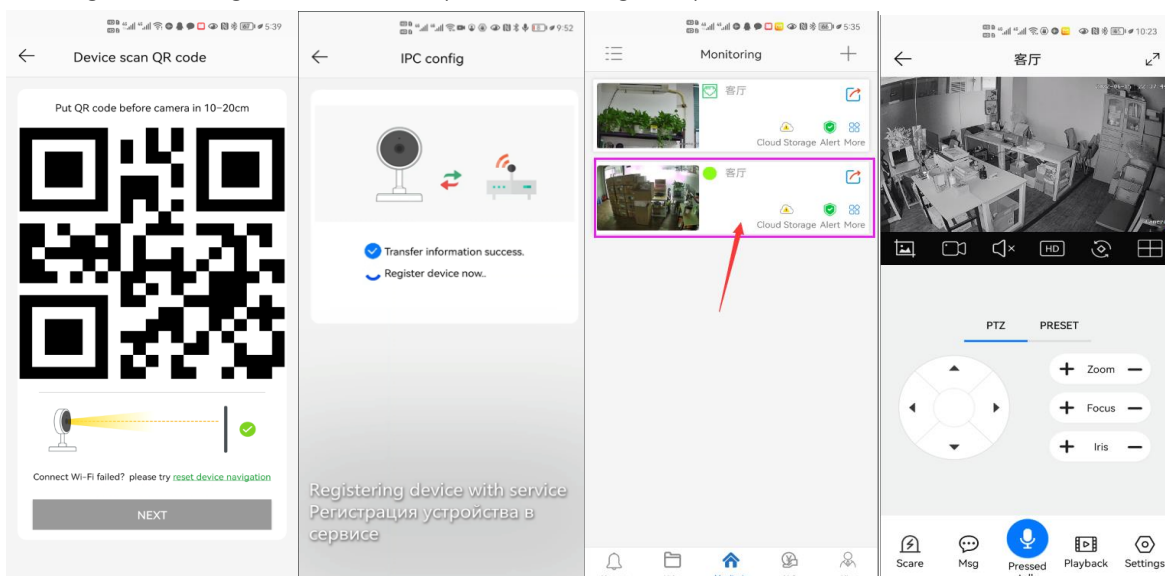
1

2

3

4

After entering the interface of Figure 4, wait for a few seconds, the APP will automatically enter the interface of Figure 5, and the camera will start to match the code through sound waves. When you hear a "di" on the phone, it means that the camera is successfully connected to your wireless router via WIFI (as shown in Figure 6). If your camera does not have a microphone and a speaker at the same time, the sound wave code matching cannot be completed, but you can also add the camera after aligning the QR code on the phone screen with the camera lens. Click the camera on Figure 7, and you will enter the camera's monitoring and management interface (as shown in Figure 8). The camera has been added successfully.



5

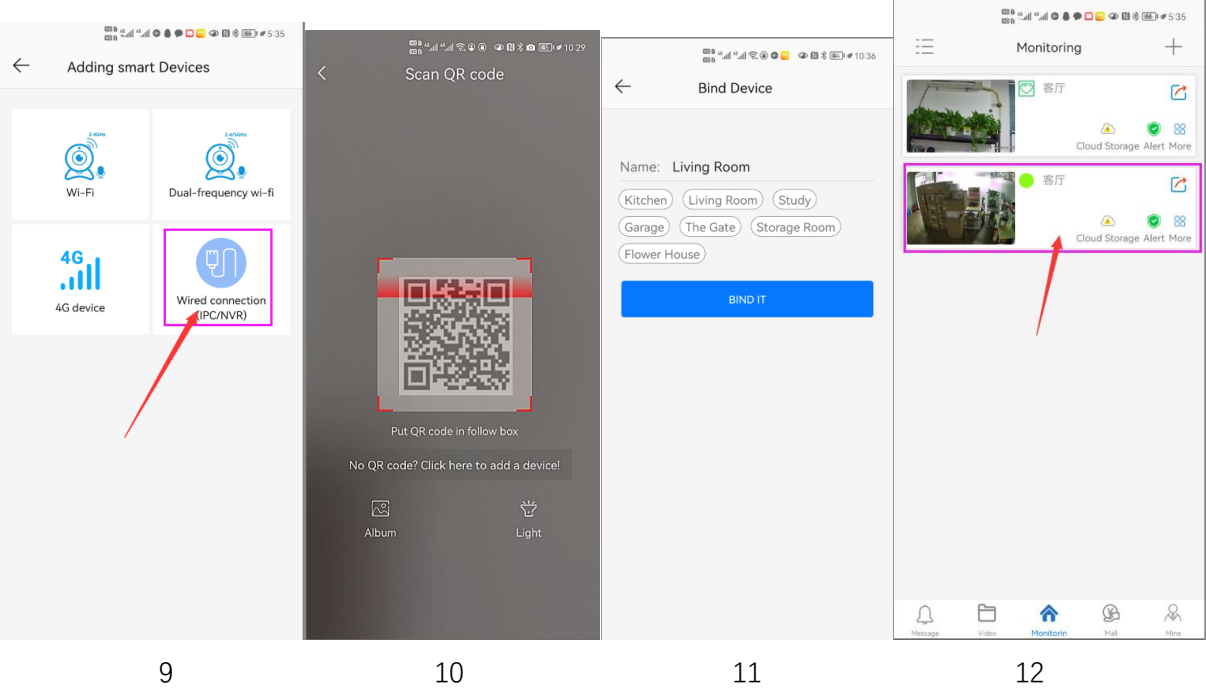
6

7

8

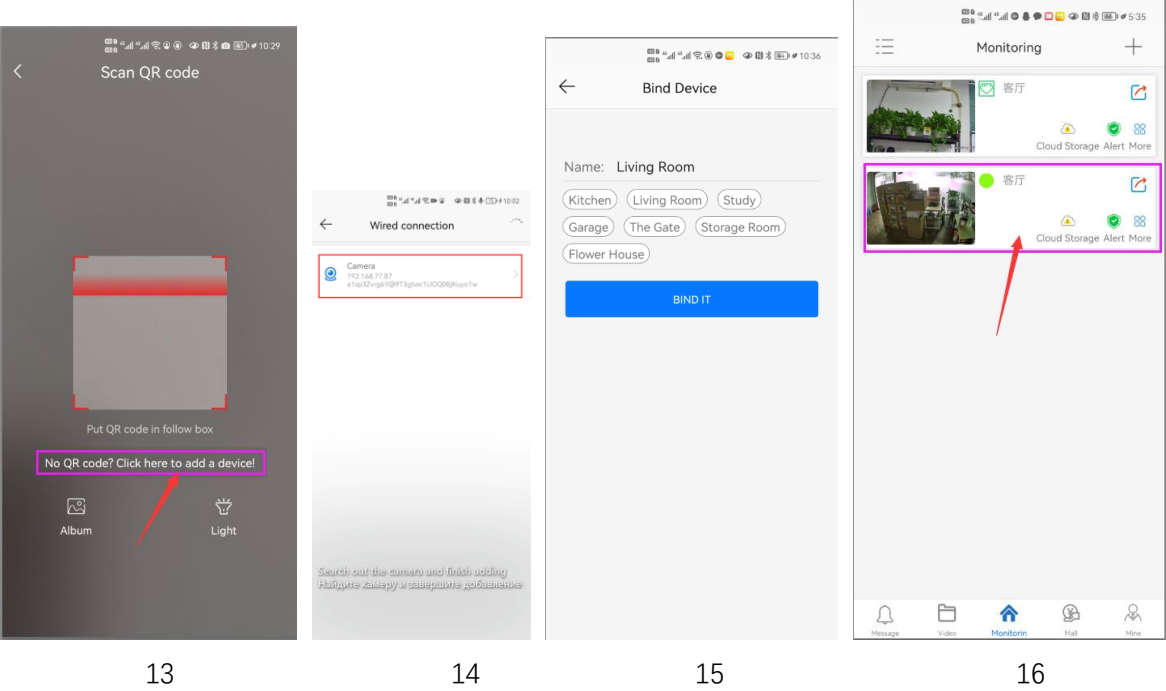
[2], Add a camera by scanning a QR code

If your camera does not have WIFI function, please connect the ethernet cable to your switch/router and connect the power adapter. Select "Wired connection camera", as shown in Figure 9, enter the interface of scanning the QR code to add a camera, point the mobile phone at the QR code on the camera body to scan (as shown in Figure 10), after scanning is successful, please provide your Customize a name for the camera, and click "BIND IT" to complete the addition (as shown in Figure 12)



[3], Add cameras via LAN connection

If the QR code cannot be found on the camera, you can click "Click here to add a device" to add the camera through the LAN search (as shown in Figure 12), enter the search page, and the APP will automatically search for the camera, as shown in Figure 13 display, and then click the camera to complete the addition.



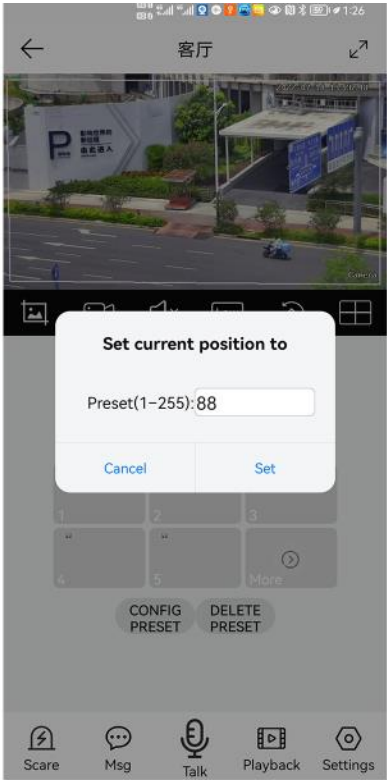
[4],How to Turn on/off auto humanoid Tracking



1



2

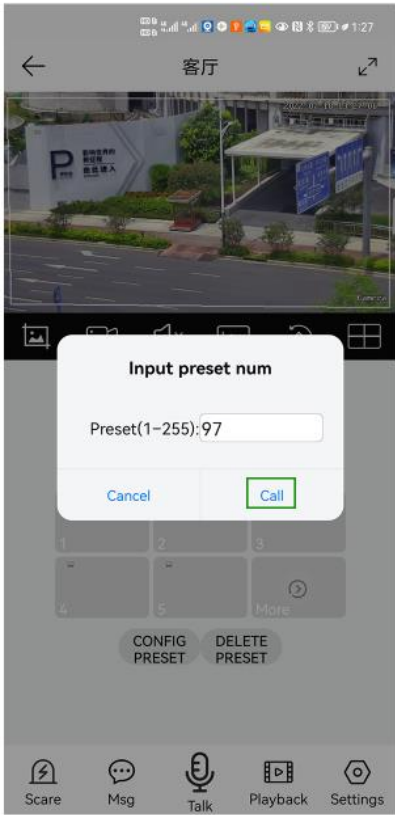


3

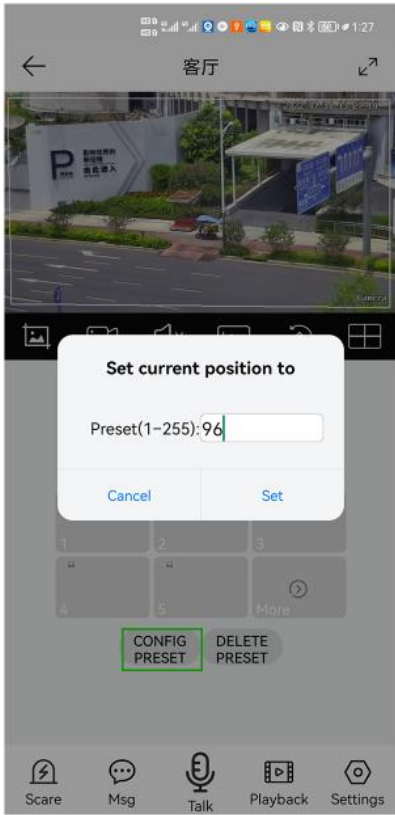
- 1,Control the PTZ button to rotate the camera to your desired position (set a Return position)
- 2. Switch the PTZ control interface to the preset position setting interface.
- 3,Input 88,Then click "Set" button.The tracking return position(Home position) set successfully



4



6



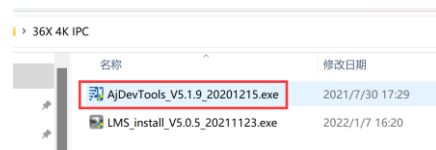
6

- 4,Click "More" to enter the preset Call interface
- 5,Input 97 and click"Call",The camera will auto turn one humanoid Tracking
- 6,Click the "config preset" button to enter the preset setting interface. Enter 96, then click "Set", the humanoid tracking will be turned off.

Part 2: Add and manage cameras using PC software

[1], Install search tool on your PC

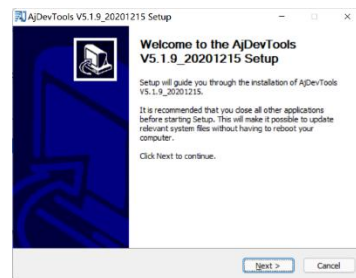
1, Run "AjDevTools_V5.1.9_20201215.exe" and complete the installation



1

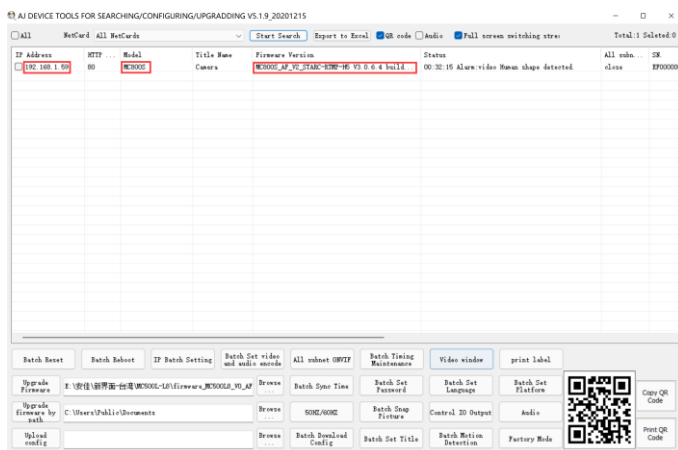


2

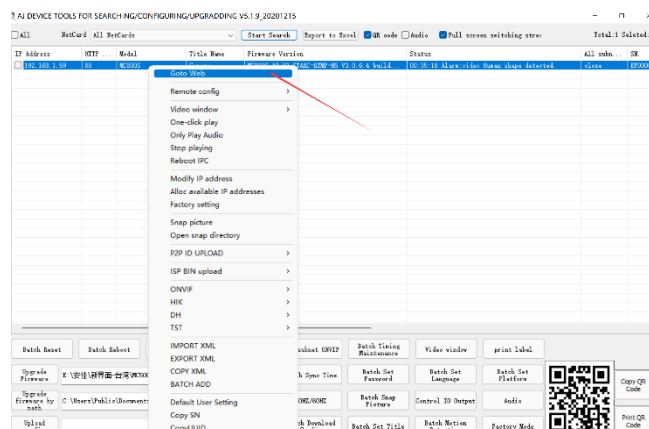


3

2, Run the software, as shown below (4)



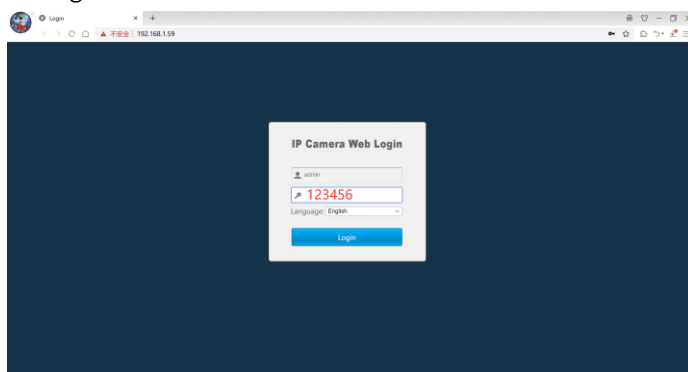
4



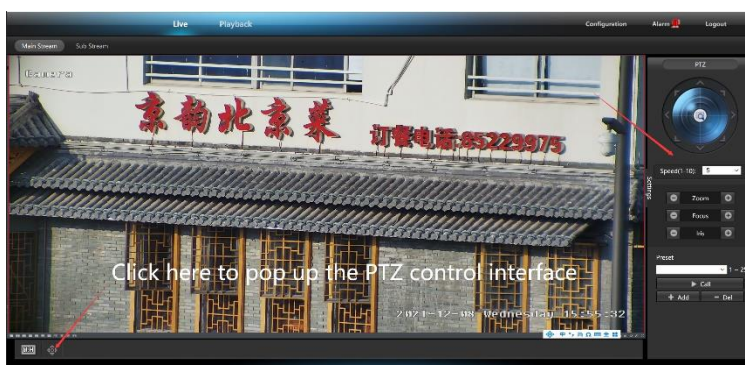
5

3, Here you can modify the IP address of the camera, upgrade the firmware and other parameter settings. Right-click on the IP address to open the camera with a browser in the figure 5.

4, Enter the browser login interface, login user name: admin, password: 123456, as shown in the following figure (if the browser prompts you to download and install the plug-in, please download and install it): Then click login, as shown in the figure 7



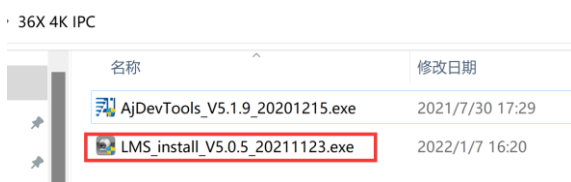
6



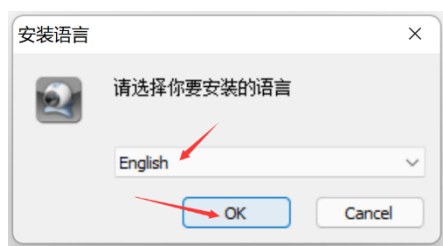
7

[2], Use PC software to search and add cameras

1, Install the LMS computer software.



8



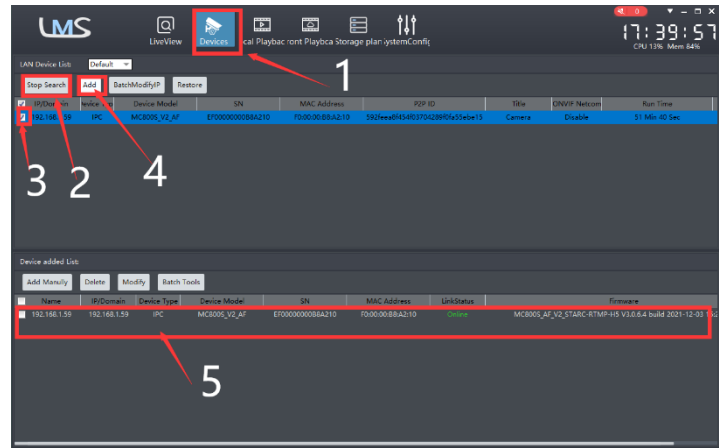
9

The software supports English, Simplified Chinese and Traditional Chinese (if you want to support other languages, we can provide you with language packs, you can translate into the language you want, and then we can provide you with software customization)

- 2, Follow the prompts to complete the software installation
- 3, Run the LMS software:user:admin,password:123456



Click LOGIN to log in to the software



10



11

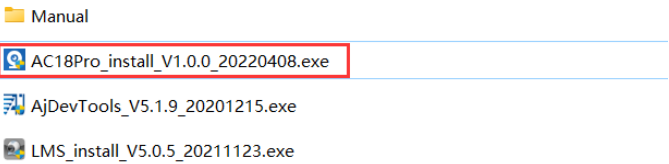
- 4. Search and add cameras.Click “Devices>””Start Search”>click“3”>add >successfully added, as shown in the figure 10

Then click”” go to Liveview, as shown in the figure 11

Double click on the IP address and the video will automatically appear in the video box on the right.

[3], Preview and control cameras with AC18PRO PC software

- 1, Double-click the AC18PRO software in the directory, follow the prompts to complete the installation of the camera, and then run the camera.



2,run and login AC18PRO,

The username and password here are the account you registered for the first time on your mobile phone.

Click login button go to AC18PRO

You will see all the cameras under your account, you can preview the cameras and view the video playback in this way

