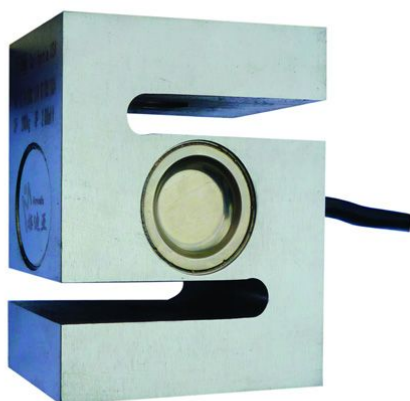


STL-C Ton 0.05,0.1,0.2,0.3,0.5,1,2,3,5t (Citation: GB/T7551-2008/ OIML R60 C3).....

Cable Length=L:6m.....

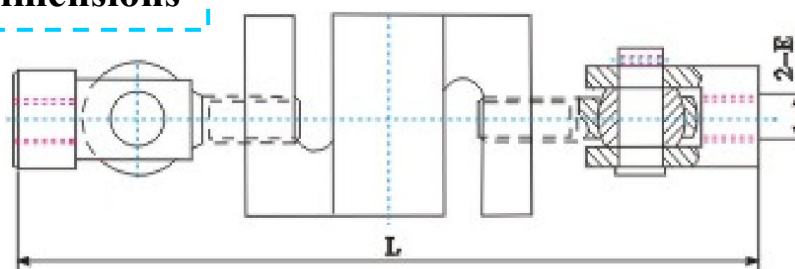
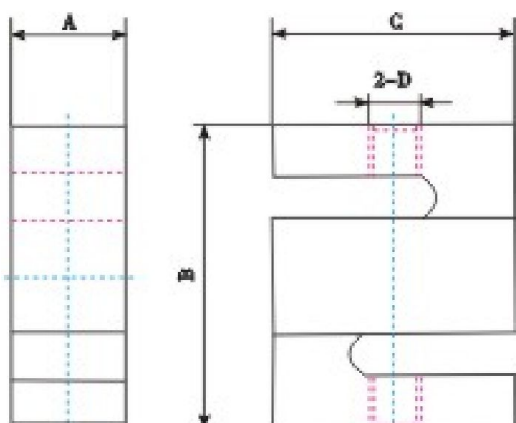
Mode Of Connection: Red(Excitation+),Black(Excitation-),Green(Signal+),White(Signal-)...



The STL-C S-beam load cells is designed for industrial scale conversion and a variety of process applications.

- Compacted in design,S-type structure,
- Multilayer seal and laser welded design to ensure compliance with IP68;
- Heat-treated special Stainless steel load cell bodies,good performance...
- High precision $\pm 0.02\%$ F.S
- Reliability super stability
- Easy installation
- Good Interchangeability

Dimensions



Rated Load(T)	A	B	C	D	E	L
0.05~0.3	25.4	76.2	50.8	M10×1	M12×1.75	240
0.5	25.4	76.2	50.8	M12×1	M12×1.75	240
1	36	76.2	50.8	M12×1	M12×1.75	240
2	45	86	86	M16×1.5	M14×2.0	291
3	45	86	86	M18×1.5	M18×1.5	293
5	58	130	130	M20×2	M20×2.5	337

Accessories

A B C



Technical Parameters

Capacity	0.05,0.1,0.2,0.3,0.5,1,2,3,5t	Tco	<0.02% F.S/10℃
Sensitivity	2.0±0.002 mV/V	Tc Span	<0.02% F.S/10℃
Input Resistance	400±10 Ω	Operating Temp. Range	-30~+70℃
Output Resistance	350±4 Ω	Maximum Safe Over Load	150%F.S
Insulation Resistance	≥5000M Ω	Ultimate Over Load	300%F.S
Combined Error	±0.02% F.S	Recommend Excitation	10~12V DC
Creep Error (30min)	<0.02% F.S	Maximum Excitation	15V DC
Zero Balance	<1% F.S	The degree of protection	IP68

*Specifications are subject to change without notice.

Mar.2014