

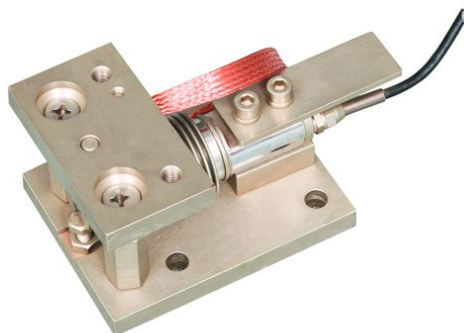
# Weigh Module

## Model HM-E IV

Specially Designed For

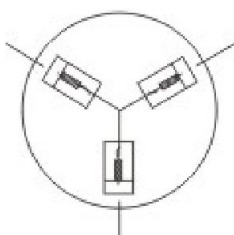
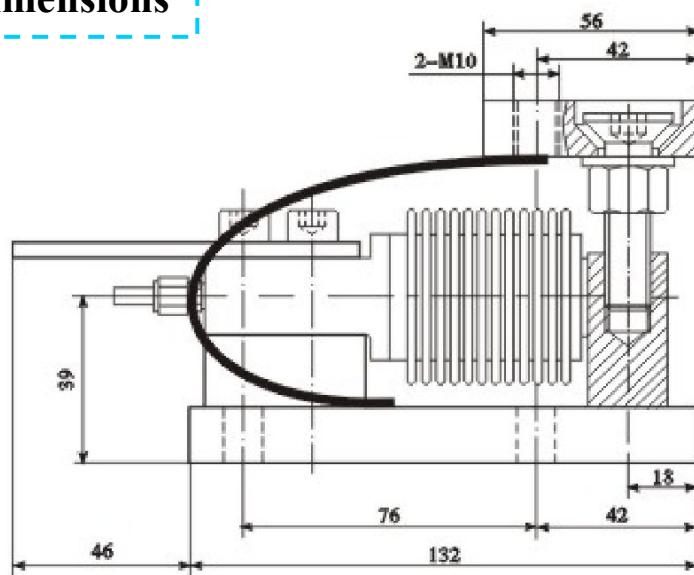
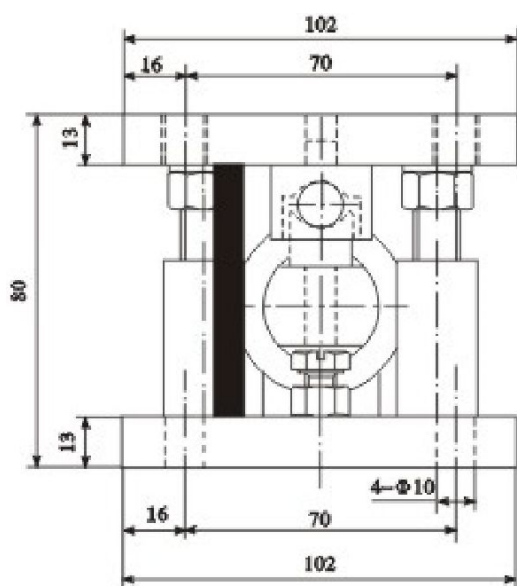
Hopper scale Conveyor weighing.

(25~300kg)

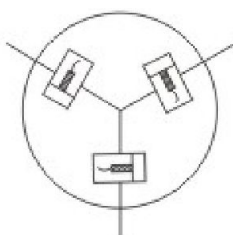


- High precision fully laser welded stainless steel load cell SSB-IV(OIML R60 C3 &NTEP 10000III L),IP68,Capable of using in unfavorable conditions.
- Unique structure which is fit for most kind of tank
- Three types of top plate structure(Stationary type,Semi-floating type,Floating type) Which can counteract the temperature effect on the tanks.
- Ball self-centering design for accurate weighing.
- Self checking and over lift protection structure for no check rods needed.
- Stay bolt prevents the equipment from falling down.
- Easy to install and maintain which take less time from machine halt.
- Nickel plated steel mounting kit.

### Dimensions



Radial Layout



Tangent Layout



Rectangle Layout

\*Specifications are subject to change without notice.

Mar.2014