

ARK

为自动化铺路

ARK气动品牌创立于2000年，产品由韩国几家具有二十多年专业生产气动元件经验的厂商，并精选国内和其他国家或地区的工厂生产。ARK致力于为顾客提供完整系列优质气动产品，同时降低成本，增加竞争力，为食品、包装、印刷、纺织、电子、汽车、化工等诸多行业工业自动化提供配套服务。

水分分离器 Water Separator KAMG /主路过滤器 Mail Line Filter KAFF /油雾分离器 Oil Mist Separator KAM/ 微雾分离器 Micro Mist Separator KAMD /微雾分离器带前置过滤 Micro Mist Separator with Prefilter KAMH



KAMG/KAFF/KAM
/KAMD/KAMH

| 型号 Model | 接管口径 Port Size Rc(PT) | 额定流量 Flow Rate (l/min) | | | | | 工作压力范围 Operating Pressure Range | |
|--------------------|--|---------------------------|--------|---------|---------|---------|------------------------------------|--------------|
| | | KAMG | KAFF | KAM | KAMD | KAMH | KAMG/KAM/ KAMD/KAMH | KAFF |
| 250 | 1/4" | 750 | 750 | 750 | 500 | 500 | 0.15~1.0 MPa | 0.05~1.0 MPa |
| 350 | 3/8", 1/2" | 1500 | 1500 | 1500 | 1000 | 1000 | | |
| 450 | 3/4" | 2200 | 2200 | 2200 | 2000 | 2000 | | |
| 550 | 3/4", 1" | 3500 | 3500 | 3500 | 3500 | 3500 | | |
| 650 | 1 1/2" | 6000 | 6000 | 6000 | 6000 | 6000 | | |
| 850 | 1 1/2", 2" | 12000 | 12000 | 12000 | 12000 | 12000 | | |
| 过滤精度 Filtration | 99% 除水率 Removal rate of water | 3 μm | 0.3 μm | 0.01 μm | 0.01 μm | 0.01 μm | | |

空气过滤器组合 F.R.L. Combinations

三联件 Air Filter + Regulator + Lubricator



KAF+KAR+KAL

| 型号 Model | | 组件 Components | | | 额定 流量 Flow Rate (l/min) | 接管 口径 Port Size Rc(PT) | 压力表 口径 Gauge Port Size Rc(PT) | 支架 (2件) Bracket (2 pcs.) |
|---------------------------|-------------------------|-------------------|------------------|-------------------|----------------------------------|---------------------------------|--|-----------------------------------|
| 手动 排水型 Manual Drain | 自动 排水型 Auto Drain | 过滤器 Air Filter | 调压阀 Regulator | 油雾器 Lubricator | | | | |
| KAC2000-02 | KAC2000-02D | KAF2000 | KAR2000 | KAL2000 | 500 | 1/4" | 1/8" | B210T |
| KAC3000-03 | KAC3000-03D | KAF3000 | KAR3000 | KAL3000 | 2000 | 3/8" | 1/8" | B310L |
| KAC4000-04 | KAC4000-04D | KAF4000 | KAR4000 | KAL4000 | 4000 | 1/2" | 1/4" | B410L |
| KAC4000-06 | KAC4000-06D | KAF4000 | KAR4000 | KAL4000 | 4500 | 3/4" | 1/4" | B510L |
| KAC6000-06 | KAC6000-06D | KAF6000 | KAR6000 | KAL6000 | 6000 | 3/4" | 1/4" | B610L |
| KAC6000-10 | KAC6000-10D | KAF6000 | KAR6000 | KAL6000 | 6000 | 1" | 1/4" | B610L |

PAGE

1

二联件 Filter Regulator + Lubricator



KAW+KAL

| 型号 Model | | 组件 Components | | 额定 流量 Flow Rate (l/min) | 接管 口径 Port Size Rc(PT) | 压力表 口径 Gauge Port Size Rc(PT) | 支架 Bracket |
|---------------------------|-------------------------|----------------------------------|-------------------|----------------------------------|---------------------------------|--|---------------|
| 手动 排水型 Manual Drain | 自动 排水型 Auto Drain | 过滤 调压阀 Filter Regulator | 油雾器 Lubricator | | | | |
| KAC2010-02 | KAC2010-02D | KAW2000 | KAL2000 | 500 | 1/4" | 1/8" | B210T |
| KAC3010-03 | KAC3010-03D | KAW3000 | KAL3000 | 1700 | 3/8" | 1/8" | B310T |
| KAC4010-04 | KAC4010-04D | KAW4000 | KAL4000 | 3000 | 1/2" | 1/4" | B410T |
| KAC6010-06 | KAC6010-06D | KAW6000 | KAL6000 | 4500 | 3/4" | 1/4" | B610T |
| KAC6010-10 | KAC6010-10D | KAW6000 | KAL6000 | 4500 | 1" | 1/4" | B610T |

空气管道元件 Air Pipe Line Components

空气过滤器 Air Filter



KAF

| 型号 Model | | 额定流量 Flow Rate (l/min) | 接管口径 Port Size Rc(PT) | 杯容量 Bowl Capacity (cm ³) | 支架 Bracket | 过滤精度 Filtration |
|-----------------------|---------------------|------------------------------|--------------------------|--|---------------|--------------------|
| 手动排水型 Manual Drain | 自动排水型 Auto Drain | | | | | |
| KAF2000-02 | KAF2000-02D | 750 | 1/4" | 15 | B200 | 10 μm |
| KAF3000-03 | KAF3000-03D | 2000 | 3/8" | 20 | B300 | |
| KAF4000-04 | KAF4000-04D | 4000 | 1/2" | 45 | B400 | |
| KAF4000-06 | KAF4000-06D | 6000 | 3/4" | 45 | B400 | |
| KAF6000-06 | KAF6000-06D | 7000 | 3/4" | 130 | B600 | |
| KAF6000-10 | KAF6000-10D | 7000 | 1" | 130 | B600 | |

调压阀 Regulator



KAR

| 型号 Model | 额定流量 Flow Rate (l/min) | 接管口径 Port Size Rc(PT) | 压力表口径 Gauge Port Size Rc(PT) | 支架 Bracket |
|-------------|------------------------------|-----------------------------|------------------------------------|---------------|
| KAR1000-M5 | 115 | M5 | 1/16" | B120 |
| KAR1000-01 | 115 | 1/8" | 1/16" | B120 |
| KAR2000-02 | 500 | 1/4" | 1/8" | B220 |
| KAR3000-03 | 2500 | 3/8" | 1/8" | B320 |
| KAR4000-04 | 6000 | 1/2" | 1/4" | B420 |
| KAR4000-06 | 6000 | 3/4" | 1/4" | B420 |
| KAR6000-06 | 8000 | 3/4" | 1/4" | B420 |
| KAR6000-10 | 8000 | 1" | 1/4" | B420 |

小型调压阀 Minitype Regulator



KAR

| 型号 Model | 额定流量 Flow Rate (l/min) | 接管口径 Port Size Rc(PT) | 压力表口径 Gauge Port Size Rc(PT) |
|-------------|------------------------------|-----------------------------|------------------------------------|
| KAR20 | 700 | 1/8", 1/4" | 1/8" |

注: 压力调整范围可选: 0.15~2 bar, 0.5~4 bar, 0.5~7 bar, 0.5~10 bar

Note: Optional regulating pressure range: 0.15~2 bar, 0.5~4 bar, 0.5~7 bar, 0.5~10 bar.

油雾器 Lubricator



KAL

| 型号 Model | 最低操作流量 Min. Flow (l/min) | 额定流量 Flow Rate (l/min) | 接管口径 Port Size Rc(PT) | 杯容量 Bowl Capacity (cm ³) | 支架 Bracket |
|-------------|--------------------------------|------------------------------|-----------------------------|--|---------------|
| KAL2000-02 | 15 | 800 | 1/4" | 25 | B200 |
| KAL3000-03 | 40 | 1700 | 3/8" | 50 | B300 |
| KAL4000-04 | 50 | 5000 | 1/2" | 130 | B400 |
| KAL4000-06 | 50 | 6300 | 3/4" | 130 | B400 |
| KAL6000-06 | 190 | 7000 | 3/4" | 130 | B600 |
| KAL6000-10 | 190 | 7000 | 1" | 130 | B600 |

空气管道元件 Air Pipe Line Components

过滤器带调压阀 Filter Regulator



KAW

| 型号 Model | | 额定流量 Flow Rate (l/min) | 接管口径 Port Size Rc(PT) | 压力表口径 Gauge Port Size Rc(PT) | 支架 Bracket | 过滤精度 Filtration |
|-----------------------|---------------------|------------------------------|-----------------------------|------------------------------------|---------------|--------------------|
| 手动排水型 Manual Drain | 自动排水型 Auto Drain | | | | | |
| KAW2000-02 | KAW2000-02D | 550 | 1/4" | 1/8" | B220 | 10 μm |
| KAW3000-03 | KAW3000-03D | 2000 | 3/8" | 1/8" | B320 | |
| KAW4000-04 | KAW4000-04D | 4000 | 1/2" | 1/4" | B420 | |
| KAW6000-06 | KAW6000-06D | 6000 | 3/4" | 1/4" | B600 | |
| KAW6000-10 | KAW6000-10D | 6000 | 1" | 1/4" | B600 | |

油雾分离器 Oil Mist Separator



KAFM

| 型号 Model | | 额定流量 Flow Rate (l/min) | 接管口径 Port Size Rc(PT) | 支架 Bracket | 过滤精度 Filtration |
|-----------------------|---------------------|------------------------------|-----------------------------|---------------|--------------------|
| 手动排水型 Manual Drain | 自动排水型 Auto Drain | | | | |
| KAFM2000-02 | KAFM2000-02D | 200 | 1/4" | B200 | 0.3 μm |
| KAFM3000-03 | KAFM3000-03D | 450 | 3/8" | B300 | |
| KAFM4000-04 | KAFM4000-04D | 1100 | 1/2" | B400 | |

微雾分离器 Micro Mist Separator



KAFD

| 型号 Model | | 额定流量 Flow Rate (l/min) | 接管口径 Port Size Rc(PT) | 支架 Bracket | 过滤精度 Filtration |
|-----------------------|---------------------|------------------------------|-----------------------------|---------------|--------------------|
| 手动排水型 Manual Drain | 自动排水型 Auto Drain | | | | |
| KAFD2000-02 | KAFD2000-02D | 120 | 1/4" | B200 | 0.01 μm |
| KAFD3000-03 | KAFD3000-03D | 240 | 3/8" | B300 | |
| KAFD4000-04 | KAFD4000-04D | 600 | 1/2" | B400 | |

排气洁净器 Exhaust Cleaner



KAMC

| 型号 Model | 接管口径 Port Size Rc(PT) | 螺纹形式 Thread type | 有效截面积 Effective Sectional Area (mm ²) | 最大处理流量 Max. Flow Rate (l/min) |
|-------------|-----------------------------|---------------------|---|-------------------------------------|
| KAMC220-02 | 1/4" | 内螺纹 Female | 12 | 200 |
| KAMC320-02 | 1/4" | | 16 | 300 |
| KAMC320-03 | 3/8" | | 16 | 300 |
| KAMC520-04 | 1/2" | | 55 | 1000 |
| KAMC520-06 | 3/4" | | 55 | 1000 |

大流量空气管道元件 Large Flow Air Pipe Line Components

大流量空气过滤器 Large Flow Air Filter



KAF

| 型号 Model | | 额定流量 Flow Rate (l/min) | 接管口径 Port Size Rc(PT) | 杯容量 Bowl Capacity (cm³) | 支架 Bracket | 过滤精度 Filtration |
|-----------------------|---------------------|------------------------------|-----------------------------|-------------------------------|---------------|--------------------|
| 手动排水型 Manual Drain | 自动排水型 Auto Drain | | | | | |
| KAF8000-12 | KAF8000-12D | 11500 | 1 1/4" | 180 | B850 | 10 μm |
| KAF8000-14 | KAF8000-14D | 11500 | 1 1/2" | 180 | B850 | |
| KAF9000-20 | KAF9000-20D | 18500 | 2" | 180 | B850 | |

大流量调压阀 Large Flow Regulator



KAR

| 型号 Model | 额定流量 Flow Rate (l/min) | 接管口径 Port Size Rc(PT) | 压力表口径 Gauge Port Size Rc(PT) |
|-------------|------------------------------|-----------------------------|------------------------------------|
| KAR8025-12 | 18000 | 1 1/4" | 1/4" |
| KAR8025-14 | 18000 | 1 1/2" | 1/4" |
| KAR9025-20 | 22000 | 2" | 1/4" |

大流量油雾器 Large Flow Lubricator



KAL

| 型号 Model | 最低操作流量 Min. Flow (l/min) | 额定流量 Flow Rate (l/min) | 接管口径 Port Size Rc(PT) | 杯容量 Bowl Capacity (cm³) |
|-------------|--------------------------------|------------------------------|-----------------------------|-------------------------------|
| KAL8000-12 | 460 | 9000 | 1 1/4" | 500 |
| KAL8000-14 | 650 | 9000 | 1 1/2" | 500 |
| KAL9000-20 | 1800 | 12000 | 2" | 500 |

压力控制阀 Pressure Controller

精密调压阀 Precision Regulator



KIR

| 型号 Model | 设定压力范围 Setting Pressure Range (MPa) | 接管口径 Port Size Rc(PT) | 压力表口径 Gauge Port Size Rc(PT) |
|-------------|--|--------------------------|---------------------------------|
| KIR1000-01 | 0.005~0.2 | 1/8" | 1/8" |
| KIR1010-01 | 0.01~0.4 | 1/8" | 1/8" |
| KIR1020-01 | 0.01~0.8 | 1/8" | 1/8" |
| KIR2000-02 | 0.005~0.2 | 1/4" | 1/8" |
| KIR2010-02 | 0.01~0.4 | 1/4" | 1/8" |
| KIR2020-02 | 0.01~0.8 | 1/4" | 1/8" |

电气比例阀 Electro-Pneumatic Proportional Regulator



KITV

| 型号 Model | 调压范围 Regulating Pressure Range (KPa) | 输入信号 Input | 电信号输出 Output | 接管口径 Port Size |
|-------------|---|---|------------------------|-------------------|
| KITV1010 | 0~100 (0~1 bar) | | | |
| KITV1020 | 0~300 (0~3 bar) | | | |
| KITV1030 | 0~500 (0~5 bar) | | | G1/8" |
| KITV1040 | 0~800 (0~8 bar) | | | G1/4" |
| KITV1050 | 0~900 (0~9 bar) | | | |
| KITV2010 | 0~100 (0~1 bar) | | | |
| KITV2020 | 0~300 (0~3 bar) | 4~20 mA 0~20 mA DC 0~5 V DC 0~10 V | DC 1~5 V NPN PNP | |
| KITV2030 | 0~500 (0~5 bar) | 4点预设输入 4 point preset input | 4~20 mA | G1/4" G3/8" |
| KITV2040 | 0~800 (0~8 bar) | | | |
| KITV2050 | 0~900 (0~9 bar) | | | |
| KITV3010 | 0~100 (0~1 bar) | | | |
| KITV3020 | 0~300 (0~3 bar) | | | G1/4" |
| KITV3030 | 0~500 (0~5 bar) | | | G3/8" |
| KITV3040 | 0~800 (0~8 bar) | | | G1/2" |
| KITV3050 | 0~900 (0~9 bar) | | | |

PAGE

5

压力表 Pressure Gauge

压力表 Pressure Gauge



| 型号 Model | 压力范围 Pressure Range (MPa) | 适用型号 Applicable Models |
|-------------|----------------------------------|--|
| KG40-02-01 | 0~0.2 (0~2 kgf/cm ²) | KAR20 |
| KG40-04-01 | 0~0.4 (0~4 kgf/cm ²) | KAR20 |
| KG40-10-01 | 0~1 (0~10 kgf/cm ²) | KAR20 KAR2000, KAR3000, KAW2000, KAW3000, KAC2000, 2010, 2020, 2030, 2040, KAC3000, 3010, 3020, 3030, 3040, |
| KG50-10-02 | 0~1 (0~10 kgf/cm ²) | KAR4000, KAR6000, KAW4000, KAW6000, KAC4000, 4010, 4020, 4030, 4040, KAC6000, KAC6010, KAC6020 |

压力表 Pressure Gauge / 压力开关 Pressure Switch

面板型压力表 Panel Mounting Pressure Gauge



| 型号 Model | 压力范围 Pressure Range (MPa) | 外形尺寸 Dimensions (mm) |
|-------------|----------------------------------|----------------------------|
| KG40P-02-01 | 0~0.2 (0~2 kgf/cm ²) | |
| KG40P-04-01 | 0~0.4 (0~4 kgf/cm ²) | |
| KG40P-10-01 | 0~1 (0~10 kgf/cm ²) | |

压力开关 Pressure Switch



| 型号 Model | 设定压力范围 Setting Pressure Range (MPa) | 压差调整范围 Regulating Hysteresis Range (MPa) | 耐压力 Proof Pressure (MPa) | 接管口径 Port Size Rc(PT) |
|-------------|---|--|-----------------------------|-----------------------------|
| KSNS-C103 | -0.07~0.3 | 0.04~0.2 | 1.1 | 1/4" |
| KSNS-C106 | -0.07~0.6 | 0.06~0.4 | 1.65 | 1/4" |
| KSNS-C110 | 0.1~1 | 0.1~0.3 | 1.65 | 1/4" |
| KSNS-C120 | 0.5~2 | 0.2~0.4 | 4 | 1/4" |
| KSNS-C130 | 0.5~3 | 0.5~1.0 | 4 | 1/4" |

数显型压力开关 Pressure Switch with Digital Display



| 型号 Model | 设定压力范围 Setting Pressure Range | 设定压力精度 Setting Pressure Resolution | 耐压力 Proof Pressure | 输出 Output | 使用流体 Fluid |
|--------------|-------------------------------------|--|--------------------------|----------------------------|--|
| KP43P-010-F1 | -0.1~1.0 MPa | 0.001 MPa | 1.5 MPa | 2 NPN & 模拟Analog (1~5 V) | 空气; 非腐蚀性 不可燃 气体 Air, neither corrosive nor flammable gas |
| KP43P-011-F1 | -0.1~1.0 MPa | 0.001 MPa | 1.5 MPa | 2 NPN & 模拟Analog (4~20 mA) | |
| KP43P-02-F1 | -0.1~1.0 MPa | 0.001 MPa | 1.5 MPa | 2 NPN & 复制功能Copy | |
| KP43P-030-F1 | -0.1~1.0 MPa | 0.001 MPa | 1.5 MPa | 2 PNP & 模拟Analog (1~5 V) | |
| KP43P-031-F1 | -0.1~1.0 MPa | 0.001 MPa | 1.5 MPa | 2 PNP & 模拟Analog (4~20 mA) | |
| KP43P-04-F1 | -0.1~1.0 MPa | 0.001 MPa | 1.5 MPa | 2 PNP & 复制功能Copy | |
| KP43V-010-F1 | -101.3~10 KPa | 0.1 KPa | 300 KPa | 2 NPN & 模拟Analog (1~5 V) | |
| KP43V-011-F1 | -101.3~10 KPa | 0.1 KPa | 300 KPa | 2 NPN & 模拟Analog (4~20 mA) | |
| KP43V-02-F1 | -101.3~10 KPa | 0.1 KPa | 300 KPa | 2 NPN & 复制功能Copy | |
| KP43V-030-F1 | -101.3~10 KPa | 0.1 KPa | 300 KPa | 2 PNP & 模拟Analog (1~5 V) | |
| KP43V-031-F1 | -101.3~10 KPa | 0.1 KPa | 300 KPa | 2 PNP & 模拟Analog (4~20 mA) | |
| KP43V-04-F1 | -101.3~10 KPa | 0.1 KPa | 300 KPa | 2 PNP & 复制功能Copy | |
| KP43C-010-F1 | -101~101 KPa | 0.1 KPa | 300 KPa | 2 NPN & 模拟Analog (1~5 V) | |
| KP43C-011-F1 | -101~101 KPa | 0.1 KPa | 300 KPa | 2 NPN & 模拟Analog (4~20 mA) | |
| KP43C-02-F1 | -101~101 KPa | 0.1 KPa | 300 KPa | 2 NPN & 复制功能Copy | |
| KP43C-030-F1 | -101~101 KPa | 0.1 KPa | 300 KPa | 2 PNP & 模拟Analog (1~5 V) | |
| KP43C-031-F1 | -101~101 KPa | 0.1 KPa | 300 KPa | 2 PNP & 模拟Analog (4~20 mA) | |
| KP43C-04-F1 | -101~101 KPa | 0.1 KPa | 300 KPa | 2 PNP & 复制功能Copy | |

电磁阀 Solenoid Valve

微型电磁阀 Miniature Valve



KGM114 KGM215

| 型号 Model | 结构 Configuration | 接管口径 Port Size Rc(PT) | 通径 Orifice (mm ²) | 工作压力范围 Operating Pressure Range (MPa) | 切换方式 Operation |
|-------------|---------------------|-----------------------------|-------------------------------------|--|----------------------------------|
| KGM114 | 2位3通 | M5 | Ø0.7 | 0~0.7 | 直动常闭 Direct operated, N.C. |
| KGM215 | 3/2-way | M5 | Ø1.5 | 0~0.7 | |

3通电磁阀 3-Port Solenoid Valve



KSV100/KSV200 KVZ312/KVZ512



KVT307 KVP342/KVP542/KVP642

| 型号 Model | 结构 Configuration | 接管口径 Port Size Rc(PT) | 有效截面积 Effective Sectional Area (mm ²) | 工作压力范围 Operating Pressure Range (MPa) | 切换方式 Operation |
|-------------|---------------------------|-----------------------------|---|--|---------------------------|
| KSV200 | 2位3通 3/2-way N.O./N.C. | M5 | Ø1.1 | 0~0.8 | 直动型 Direct operated |
| KSV100 | | 1/8" | Ø1.5 | 0~0.8 | |
| KVT307 | | 1/4" | 3.5 | 0~0.7 | |
| KVZ300 | | M5 | 3.6 | 0.15~1.0 | 先导型 Pilot operated |
| KVZ500 | | 1/8" | 12.6 | 0.15~1.0 | |
| KVP342 | | 1/4" | 19 | 0.15~1.0 | |
| KVP542 | | 3/8" | 36 | 0.15~1.0 | |
| KVP642 | | 1/2" | 65 | 0.15~1.0 | |

5通电磁阀 5-Port Solenoid Valve



KVZ3120



KVZ5120



KVF3130



KVF5120

| 型号 Model | 结构 Configuration | 接管口径 Port Size Rc(PT) | 有效截面积 Effective Sectional Area (mm ²) | 工作压力范围 Operating Pressure Range (MPa) | 切换方式 Operation |
|-------------|-------------------------------------|-----------------------------|--|--|--------------------------|
| KVZ3120 | 单线圈 Single | M5 | 3.6 | 0.15~1.0 | 先导型 Pilot operated |
| KVZ3220 | 双线圈 Double | M5 | 3.6 | 0.15~1.0 | |
| KVZ3320 | 3位5通, 中央封闭 5/3-way, closed center | M5 | 3 | 0.2~1.0 | |
| KVZ3420 | 3位5通, 中央排气 5/3-way, exhaust center | M5 | 3 | 0.2~1.0 | |
| KVZ3520 | 3位5通, 中央加压 5/3-way, pressure center | M5 | 3 | 0.2~1.0 | |
| KVZ5120 | 单线圈 Single | 1/8" | 12.6 | 0.15~1.0 | |
| KVZ5220 | 双线圈 Double | 1/8" | 12.6 | 0.15~1.0 | |
| KVZ5320 | 3位5通, 中央封闭 5/3-way, closed center | 1/8" | 9 | 0.2~1.0 | |
| KVZ5420 | 3位5通, 中央排气 5/3-way, exhaust center | 1/8" | 9 | 0.2~1.0 | |
| KVZ5520 | 3位5通, 中央加压 5/3-way, pressure center | 1/8" | 9 | 0.2~1.0 | |
| KVF3130 | 单线圈 Single | 1/4" | 19 | 0.15~1.0 | |
| KVF3230 | 双线圈 Double | 1/4" | 19 | 0.15~1.0 | |
| KVF3330 | 3位5通, 中央封闭 5/3-way, closed center | 1/4" | 11.5 | 0.2~1.0 | |
| KVF3430 | 3位5通, 中央排气 5/3-way, exhaust center | 1/4" | 11.5 | 0.2~1.0 | |
| KVF3530 | 3位5通, 中央加压 5/3-way, pressure center | 1/4" | 11.5 | 0.2~1.0 | |
| KVF5120 | 单线圈 Single | 3/8" | 36 | 0.15~1.0 | |
| KVF5220 | 双线圈 Double | 3/8" | 36 | 0.15~1.0 | |
| KVF5320 | 3位5通, 中央封闭 5/3-way, closed center | 3/8" | 30 | 0.2~1.0 | |
| KVF5420 | 3位5通, 中央排气 5/3-way, exhaust center | 3/8" | 30 | 0.2~1.0 | |
| KVF5520 | 3位5通, 中央加压 5/3-way, pressure center | 3/8" | 30 | 0.2~1.0 | |
| KVF6120 | 单线圈 Single | 1/2" | 65 | 0.15~1.0 | |
| KVF6220 | 双线圈 Double | 1/2" | 65 | 0.15~1.0 | |
| KVF6320 | 3位5通, 中央封闭 5/3-way, closed center | 1/2" | 50 | 0.2~1.0 | |
| KVF6420 | 3位5通, 中央排气 5/3-way, exhaust center | 1/2" | 50 | 0.2~1.0 | |
| KVF6520 | 3位5通, 中央加压 5/3-way, pressure center | 1/2" | 50 | 0.2~1.0 | |

电磁阀 Solenoid Valve



KVF6140



KVF7140



KVF8140

| 型号 Model | 结构 Configuration | 接管口径 Port Size Rc(PT) | 有效截面积 Effective Sectional Area (mm ²) | 工作压力范围 Operating Pressure Range (MPa) | 切换方式 Operation |
|-------------|-------------------------------------|-----------------------------|--|--|--|
| KVF6140 | 单线圈 Single | 1/4", 3/8", 1/2" | 30 | 0.15~1.0 | 先导型 Pilot operated 底座 配管 Base ported |
| KVF6240 | 双线圈 Double | 1/4", 3/8", 1/2" | 30 | 0.15~1.0 | |
| KVF6340 | 3位5通, 中央封闭 5/3-way, closed center | 1/4", 3/8", 1/2" | 25 | 0.2~1.0 | |
| KVF6440 | 3位5通, 中央排气 5/3-way, exhaust center | 1/4", 3/8", 1/2" | 25 | 0.2~1.0 | |
| KVF6540 | 3位5通, 中央加压 5/3-way, pressure center | 1/4", 3/8", 1/2" | 25 | 0.2~1.0 | |
| KVF7140 | 单线圈 Single | 3/8", 1/2", 3/4" | 65 | 0.15~1.0 | |
| KVF7240 | 双线圈 Double | 3/8", 1/2", 3/4" | 65 | 0.15~1.0 | |
| KVF7340 | 3位5通, 中央封闭 5/3-way, closed center | 3/8", 1/2", 3/4" | 50 | 0.2~1.0 | |
| KVF7440 | 3位5通, 中央排气 5/3-way, exhaust center | 3/8", 1/2", 3/4" | 50 | 0.2~1.0 | |
| KVF7540 | 3位5通, 中央加压 5/3-way, pressure center | 3/8", 1/2", 3/4" | 50 | 0.2~1.0 | |
| KVF8140 | 单线圈 Single | 3/4", 1" | 90 | 0.2~1.0 | |
| KVF8240 | 双线圈 Double | 3/4", 1" | 90 | 0.2~1.0 | |
| KVF8340 | 3位5通, 中央封闭 5/3-way, closed center | 3/4", 1" | 70 | 0.25~1.0 | |
| KVF8440 | 3位5通, 中央排气 5/3-way, exhaust center | 3/4", 1" | 70 | 0.25~1.0 | |
| KVF8540 | 3位5通, 中央加压 5/3-way, pressure center | 3/4", 1" | 70 | 0.25~1.0 | |

PAGE

8

5通电磁阀 5-Port Solenoid Valve



KSY3120



KSY5120



KSY7120

| 型号 Model | 结构 Configuration | 接管口径 Port Size | 有效截面积 Effective Sectional Area (mm ²) | 工作压力范围 Operating Pressure Range (MPa) | 切换方式 Operation |
|-------------|-------------------------------------|-------------------|--|--|--------------------------|
| KSY3120 | 单线圈 Single | M5 | 2.3 | 0.2~0.7 | 先导型 Pilot operated |
| KSY3220 | 双线圈 Double | M5 | 2.3 | 0.2~0.7 | |
| KSY3320 | 3位5通, 中央封闭 5/3-way, closed center | M5 | 1.8 | 0.25~0.7 | |
| KSY3420 | 3位5通, 中央排气 5/3-way, exhaust center | M5 | 1.8 | 0.25~0.7 | |
| KSY3520 | 3位5通, 中央加压 5/3-way, pressure center | M5 | 1.8 | 0.25~0.7 | |
| KSY5120 | 单线圈 Single | G1/8" | 9.5 | 0.15~1.0 | |
| KSY5220 | 双线圈 Double | G1/8" | 9.5 | 0.15~1.0 | |
| KSY5320 | 3位5通, 中央封闭 5/3-way, closed center | G1/8" | 7.5 | 0.2~1.0 | |
| KSY5420 | 3位5通, 中央排气 5/3-way, exhaust center | G1/8" | 7.5 | 0.2~1.0 | |
| KSY5520 | 3位5通, 中央加压 5/3-way, pressure center | G1/8" | 7.5 | 0.2~1.0 | |
| KSY7120 | 单线圈 Single | G1/4" | 16 | 0.15~1.0 | |
| KSY7220 | 双线圈 Double | G1/4" | 16 | 0.15~1.0 | |
| KSY7320 | 3位5通, 中央封闭 5/3-way, closed center | G1/4" | 12 | 0.2~1.0 | |
| KSY7420 | 3位5通, 中央排气 5/3-way, exhaust center | G1/4" | 12 | 0.2~1.0 | |
| KSY7520 | 3位5通, 中央加压 5/3-way, pressure center | G1/4" | 12 | 0.2~1.0 | |
| KSY9120 | 单线圈 Single | G3/8" | 40 | 0.15~1.0 | |
| KSY9220 | 双线圈 Double | G3/8" | 40 | 0.15~1.0 | |
| KSY9320 | 3位5通, 中央封闭 5/3-way, closed center | G3/8" | 30 | 0.2~1.0 | |
| KSY9420 | 3位5通, 中央排气 5/3-way, exhaust center | G3/8" | 30 | 0.2~1.0 | |
| KSY9520 | 3位5通, 中央加压 5/3-way, pressure center | G3/8" | 30 | 0.2~1.0 | |

电磁阀 Solenoid Valve



KSY7140

| 型号 Model | 结构 Configuration | 接管口径 Port Size | 有效截面积 Effective Sectional Area (mm ²) | 工作压力范围 Operating Pressure Range (MPa) | 切换方式 Operation |
|-------------|------------------------------------|-------------------|--|--|---|
| KSY3140 | 单线圈 Single | M5 | 2.3 | 0.2~0.7 | 先导型 Pilot operated 底座 配管 Base ported |
| KSY3240 | 双线圈 Double | M5 | 2.3 | 0.2~0.7 | |
| KSY3340 | 3位5通,中央封闭 5/3-way, closed center | M5 | 1.8 | 0.25~0.7 | |
| KSY3440 | 3位5通,中央排气 5/3-way, exhaust center | M5 | 1.8 | 0.25~0.7 | |
| KSY3540 | 3位5通,中央加压 5/3-way, pressure center | M5 | 1.8 | 0.25~0.7 | |
| KSY5140 | 单线圈 Single | G1/8" | 9.5 | 0.15~1.0 | |
| KSY5240 | 双线圈 Double | G1/8" | 9.5 | 0.15~1.0 | |
| KSY5340 | 3位5通,中央封闭 5/3-way, closed center | G1/8" | 7.5 | 0.2~1.0 | |
| KSY5440 | 3位5通,中央排气 5/3-way, exhaust center | G1/8" | 7.5 | 0.2~1.0 | |
| KSY5540 | 3位5通,中央加压 5/3-way, pressure center | G1/8" | 7.5 | 0.2~1.0 | |
| KSY7140 | 单线圈 Single | G1/4" | 16 | 0.15~1.0 | |
| KSY7240 | 双线圈 Double | G1/4" | 16 | 0.15~1.0 | |
| KSY7340 | 3位5通,中央封闭 5/3-way, closed center | G1/4" | 12 | 0.2~1.0 | |
| KSY7440 | 3位5通,中央排气 5/3-way, exhaust center | G1/4" | 12 | 0.2~1.0 | |
| KSY7540 | 3位5通,中央加压 5/3-way, pressure center | G1/4" | 12 | 0.2~1.0 | |
| KSY9140 | 单线圈 Single | G3/8" | 40 | 0.15~1.0 | |
| KSY9240 | 双线圈 Double | G3/8" | 40 | 0.15~1.0 | |
| KSY9340 | 3位5通,中央封闭 5/3-way, closed center | G3/8" | 30 | 0.2~1.0 | |
| KSY9440 | 3位5通,中央排气 5/3-way, exhaust center | G3/8" | 30 | 0.2~1.0 | |
| KSY9540 | 3位5通,中央加压 5/3-way, pressure center | G3/8" | 30 | 0.2~1.0 | |

5通电磁阀 5-Port Solenoid Valve



K180-4E1



K220-4E1



K300-4E1

| 型号 Model | 结构 Configuration | 接管口径 Port Size Rc(PT) | 有效截面积 Effective Sectional Area (mm ²) | 工作压力范围 Operating Pressure Range (MPa) | 切换方式 Operation |
|-------------|------------------------------------|-----------------------------|--|--|--------------------------|
| K180-4E1 | 单线圈 Single | 1/8" | 12 | 0.15~0.8 | 先导型 Pilot operated |
| K180-4E2 | 双线圈 Double | 1/8" | 12 | 0.15~0.8 | |
| K180-4E2C | 3位5通,中央封闭 5/3-way, closed center | 1/8" | 9 | 0.2~0.7 | |
| K180-4E2P | 3位5通,中央排气 5/3-way, exhaust center | 1/8" | 9 | 0.2~0.7 | |
| K180-4E2R | 3位5通,中央加压 5/3-way, pressure center | 1/8" | 9 | 0.2~0.7 | |
| K220-4E1 | 单线圈 Single | 1/4" | 18 | 0.2~0.7 | |
| K220-4E2 | 双线圈 Double | 1/4" | 18 | 0.2~0.7 | |
| K220-4E2C | 3位5通,中央封闭 5/3-way, closed center | 1/4" | 16 | 0.3~0.7 | |
| K220-4E2P | 3位5通,中央排气 5/3-way, exhaust center | 1/4" | 16 | 0.3~0.7 | |
| K220-4E2R | 3位5通,中央加压 5/3-way, pressure center | 1/4" | 16 | 0.3~0.7 | |
| K300-4E1 | 单线圈 Single | 3/8" | 35 | 0.2~0.7 | |
| K300-4E2 | 双线圈 Double | 3/8" | 35 | 0.2~0.7 | |
| K300-4E2C | 3位5通,中央封闭 5/3-way, closed center | 3/8" | 25 | 0.3~0.7 | |
| K300-4E2P | 3位5通,中央排气 5/3-way, exhaust center | 3/8" | 25 | 0.3~0.7 | |
| K300-4E2R | 3位5通,中央加压 5/3-way, pressure center | 3/8" | 25 | 0.3~0.7 | |

气控阀 Air Operated Valve

5通气控阀 5-Port Air Operated Valve



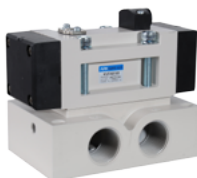
KVZA3120



KVFA6220



KVFA6140



KVFA8140

| 型号 Model | 结构 Configuration | 接管口径 Port Size Rc(PT) | 有效 截面积 Effective Sectional Area (mm ²) | 工作压力范围 Operating Pressure Range (MPa) | 切换方式 Operation |
|-------------|------------------------------------|-----------------------------|--|--|-----------------------|
| KVZA3120 | 单气控 Single | M5 | 3.6 | 0.15~1.0 | 气控 Air operated |
| KVZA3220 | 双气控 Double | M5 | 3.6 | 0.15~1.0 | |
| KVZA3320 | 3位5通,中央封闭 5/3-way, closed center | M5 | 3 | 0.2~1.0 | |
| KVZA3420 | 3位5通,中央排气 5/3-way, exhaust center | M5 | 3 | 0.2~1.0 | |
| KVZA3520 | 3位5通,中央加压 5/3-way, pressure center | M5 | 3 | 0.2~1.0 | |
| KVZA5120 | 单气控 Single | 1/8" | 12.6 | 0.15~1.0 | |
| KVZA5220 | 双气控 Double | 1/8" | 12.6 | 0.15~1.0 | |
| KVZA5320 | 3位5通,中央封闭 5/3-way, closed center | 1/8" | 9 | 0.2~1.0 | |
| KVZA5420 | 3位5通,中央排气 5/3-way, exhaust center | 1/8" | 9 | 0.2~1.0 | |
| KVZA5520 | 3位5通,中央加压 5/3-way, pressure center | 1/8" | 9 | 0.2~1.0 | |
| KVFA3130 | 单气控 Single | 1/4" | 19 | 0.15~1.0 | |
| KVFA3230 | 双气控 Double | 1/4" | 19 | 0.15~1.0 | |
| KVFA3330 | 3位5通,中央封闭 5/3-way, closed center | 1/4" | 11.5 | 0.2~1.0 | |
| KVFA3430 | 3位5通,中央排气 5/3-way, exhaust center | 1/4" | 11.5 | 0.2~1.0 | |
| KVFA3530 | 3位5通,中央加压 5/3-way, pressure center | 1/4" | 11.5 | 0.2~1.0 | |
| KVFA5120 | 单气控 Single | 3/8" | 36 | 0.15~1.0 | |
| KVFA5220 | 双气控 Double | 3/8" | 36 | 0.15~1.0 | |
| KVFA5320 | 3位5通,中央封闭 5/3-way, closed center | 3/8" | 30 | 0.2~1.0 | |
| KVFA5420 | 3位5通,中央排气 5/3-way, exhaust center | 3/8" | 30 | 0.2~1.0 | |
| KVFA5520 | 3位5通,中央加压 5/3-way, pressure center | 3/8" | 30 | 0.2~1.0 | |
| KVFA6120 | 单气控 Single | 1/2" | 65 | 0.15~1.0 | |
| KVFA6220 | 双气控 Double | 1/2" | 65 | 0.15~1.0 | |
| KVFA6320 | 3位5通,中央封闭 5/3-way, closed center | 1/2" | 50 | 0.2~1.0 | |
| KVFA6420 | 3位5通,中央排气 5/3-way, exhaust center | 1/2" | 50 | 0.2~1.0 | |
| KVFA6520 | 3位5通,中央加压 5/3-way, pressure center | 1/2" | 50 | 0.2~1.0 | |
| KVFA6140 | 单气控 Single | 1/4", 3/8", 1/2" | 30 | 0.15~1.0 | |
| KVFA6240 | 双气控 Double | 1/4", 3/8", 1/2" | 30 | 0.15~1.0 | |
| KVFA6340 | 3位5通,中央封闭 5/3-way, closed center | 1/4", 3/8", 1/2" | 25 | 0.2~1.0 | |
| KVFA6440 | 3位5通,中央排气 5/3-way, exhaust center | 1/4", 3/8", 1/2" | 25 | 0.2~1.0 | |
| KVFA6540 | 3位5通,中央加压 5/3-way, pressure center | 1/4", 3/8", 1/2" | 25 | 0.2~1.0 | |
| KVFA7140 | 单气控 Single | 3/8", 1/2", 3/4" | 65 | 0.15~1.0 | |
| KVFA7240 | 双气控 Double | 3/8", 1/2", 3/4" | 65 | 0.15~1.0 | |
| KVFA7340 | 3位5通,中央封闭 5/3-way, closed center | 3/8", 1/2", 3/4" | 50 | 0.2~1.0 | |
| KVFA7440 | 3位5通,中央排气 5/3-way, exhaust center | 3/8", 1/2", 3/4" | 50 | 0.2~1.0 | |
| KVFA7540 | 3位5通,中央加压 5/3-way, pressure center | 3/8", 1/2", 3/4" | 50 | 0.2~1.0 | |
| KVFA8140 | 单气控 Single | 3/4", 1" | 90 | 0.2~1.0 | |
| KVFA8240 | 双气控 Double | 3/4", 1" | 90 | 0.2~1.0 | |
| KVFA8340 | 3位5通,中央封闭 5/3-way, closed center | 3/4", 1" | 70 | 0.25~1.0 | |
| KVFA8440 | 3位5通,中央排气 5/3-way, exhaust center | 3/4", 1" | 70 | 0.25~1.0 | |
| KVFA8540 | 3位5通,中央加压 5/3-way, pressure center | 3/4", 1" | 70 | 0.25~1.0 | |

气控阀 Air Operated Valve / 手动阀 Hand Valve / 机械阀 Mechanical Valve

3通气控阀 3-Port Air Operated Valve



KVPA542

| 型号 Model | 结构 Configuration | 接管口径 Port Size Rc(PT) | 有效截面积 Effective Sectional Area (mm ²) | 工作压力范围 Operating Pressure Range (MPa) | 切换方式 Operation |
|-------------|---------------------------|-----------------------------|---|--|-----------------------|
| KVZA300 | 2位3通 3/2-way N.O./N.C. | M5 | 3.6 | 0.15~1.0 | 气控 Air operated |
| KVZA500 | | 1/8" | 12.6 | 0.15~1.0 | |
| KVPA342 | | 1/4" | 19 | 0.15~1.0 | |
| KVPA542 | | 3/8" | 36 | 0.15~1.0 | |
| KVPA642 | | 1/2" | 65 | 0.15~1.0 | |

4通手动阀 4-Port Hand Valve



KVH302

| 型号 Model | 结构 Configuration | 接管口径 Port Size Rc(PT) | 有效截面积 Effective Sectional Area (mm ²) | 工作压力范围 Operating Pressure Range (MPa) | 切换方式 Operation |
|-------------|------------------------------------|-----------------------------|--|--|-------------------|
| KVH200-02 | 3位4通, 中央封闭 4/3-way, closed center | 1/4" | 7.5 | 0~0.99 | 手动 Manual |
| KVH201-02 | 3位4通, 中央排气 4/3-way, exhaust center | 1/4" | 7.5 | 0~0.99 | |
| KVH202-02 | 2位4通 4/2-way | 1/4" | 7.5 | 0~0.99 | |
| KVH300-03 | 3位4通, 中央封闭 4/3-way, closed center | 3/8" | 20 | 0~0.99 | |
| KVH301-03 | 3位4通, 中央排气 4/3-way, exhaust center | 3/8" | 20 | 0~0.99 | |
| KVH302-03 | 2位4通 4/2-way | 3/8" | 20 | 0~0.99 | |
| KVH400-04 | 3位4通, 中央封闭 4/3-way, closed center | 1/2" | 55 | 0~0.99 | |
| KVH401-04 | 3位4通, 中央排气 4/3-way, exhaust center | 1/2" | 55 | 0~0.99 | |
| KVH402-04 | 2位4通 4/2-way | 1/2" | 55 | 0~0.99 | |
| KVH400-06 | 3位4通, 中央封闭 4/3-way, closed center | 3/4" | 58 | 0~0.99 | |
| KVH401-06 | 3位4通, 中央排气 4/3-way, exhaust center | 3/4" | 58 | 0~0.99 | |
| KVH402-06 | 2位4通 4/2-way | 3/4" | 58 | 0~0.99 | |

机械阀 Mechanical Valve



KVM550

| 型号 Model | 结构 Configuration | 接管口径 Port Size Rc(PT) | 有效截面积 Effective Sectional Area (mm ²) | 工作压力范围 Operating Pressure Range (MPa) | 切换方式 Operation |
|-------------|---------------------|-----------------------------|---|--|----------------------------------|
| KVM430 | 2位3通 3/2-way | 1/8" | 10.5 | 0~0.8 | 机械或手动 Mechanical or manual |
| KVM230 | 2位3通 3/2-way | 1/4" | 16 | 0~0.8 | |
| KVZM550 | 3位5通 5/3-way | 1/8" | 12.6 | 0~0.8 | |
| KVFM350 | 3位5通 5/3-way | 1/4" | 19 | 0~0.8 | |

高压2通电磁阀 High Pressure 2-Port Solenoid Valve



KAB21H

| 型号 Model | 接管口径 Port Size | 通孔直径 Orifice (mm) | 最低压差 Minimum Differential Pressure (MPa) | 最高压差 Maximum Differential Pressure (MPa) | | 切换方式 Operation |
|---------------|-------------------|-------------------------|--|--|-----|--|
| | | | | AC | DC | |
| KAB21H-01-01- | G1/8" | 1.0 | 0 | 10 | 7.5 | 直动式 常闭型 Direct operated, N.C. |
| KAB21H-01-C1- | G1/8" | 1.2 | 0 | 9 | 7 | |
| KAB21H-01-C2- | G1/8" | 1.5 | 0 | 7.5 | 5 | |
| KAB21H-01-02- | G1/8" | 2.0 | 0 | 3.5 | 3 | |
| KAB21H-01-C3- | G1/8" | 2.5 | 0 | 2 | 1.5 | |
| KAB21H-02-01- | G1/4" | 1.0 | 0 | 10 | 7.5 | |
| KAB21H-02-C1- | G1/4" | 1.2 | 0 | 9 | 7 | |
| KAB21H-02-C2- | G1/4" | 1.5 | 0 | 7.5 | 5 | |
| KAB21H-02-02- | G1/4" | 2.0 | 0 | 3.5 | 3 | |
| KAB21H-02-C3- | G1/4" | 2.5 | 0 | 2 | 1.5 | |

注 Notes: 1. 使用流体为空气, 水, 瓦斯, 轻油等。Fluid: air, water, gas, light oil, etc.

2. 密封材料可选择NBR, VITON (根据流体及流体温度选择)。

Seal material: NBR or VITON (depending on fluid and fluid temperature).

3. 阀体材料可选择铜, 不锈钢SS304。Valve body material: copper or stainless steel SS304.

流体电磁阀 Fluid Solenoid Valve

直动型2通电磁阀 Direct Operated 2-Port Solenoid Valve



KBS-XC

| 型号 Model | 接管口径 Port Size | 通孔直径 Orifice (mm) | 最低压差 Minimum Differential Pressure (MPa) | 最高压差 Maximum Differential Pressure (MPa) | | 切换方式 Operation |
|-------------|-------------------|-------------------------|--|--|------|---|
| | | | | AC | DC | |
| KBS-06XC-3- | G1/8" | 3 | 0 | 1.3 | 1.3 | 直动式 常闭型 Direct operated, N.C. |
| KBS-06XC-5- | G1/8" | 5 | 0 | 0.4 | 0.25 | |
| KBS-06XC-6- | G1/8" | 6 | 0 | 0.3 | 0.2 | |
| KBS-08XC-3- | G1/4" | 3 | 0 | 1.3 | 1.3 | |
| KBS-08XC-5- | G1/4" | 5 | 0 | 0.4 | 0.25 | |
| KBS-08XC-6- | G1/4" | 6 | 0 | 0.3 | 0.2 | |
| KBS-10XC-5- | G3/8" | 5 | 0 | 0.4 | 0.25 | |
| KBS-10XC-6- | G3/8" | 6 | 0 | 0.3 | 0.2 | |
| KBS-15XC-5- | G1/2" | 5 | 0 | 0.4 | 0.25 | |
| KBS-15XC-6- | G1/2" | 6 | 0 | 0.3 | 0.2 | |

注 Notes: 1. 使用流体为空气, 水, 热水, 瓦斯, 轻油等。Fluid: air, water, hot water, gas, light oil, etc.
2. 密封材料可选择NBR, VITON, EPDM(根据流体及流体温度选择)。
Seal material: NBR, VITON or EPDM (depending on fluid and fluid temperature).
3. 阀体材料可选择铜, 不锈钢SS316。Valve body material: copper or stainless steel SS316.

先导型零压差启动式 2通电磁阀 Zero Differential Pressure Pilot Operated 2-Port Solenoid Valve



KWK-XC

| 型号 Model | 接管口径 Port Size | 通孔直径 Orifice (mm) | 最低压差 Minimum Differential Pressure (MPa) | 最高压差 Maximum Differential Pressure (MPa) | | 切换方式 Operation |
|-------------|-------------------|-------------------------|--|--|-----|---|
| | | | | AC | DC | |
| KWK10XC-16- | G3/8" | 16 | 0 | 1.0 | 0.6 | 内部先导式 常闭型 Internal pilot operated, N.C. 零压差 Zero pressure difference |
| KWK15XC-16- | G1/2" | 16 | 0 | 1.0 | 0.6 | |
| KWK20XC-20- | G3/4" | 20 | 0 | 1.0 | 0.6 | |
| KWK25XC-25- | G1" | 25 | 0 | 1.0 | 0.6 | |
| KWK32XC-32- | G1 1/4" | 32 | 0 | 1.0 | 0.6 | |
| KWK40XC-40- | G1 1/2" | 40 | 0 | 1.0 | 0.6 | |
| KWK50XC-50- | G2" | 50 | 0 | 1.0 | 0.6 | |

注 Notes: 1. 使用流体为空气, 水, 热水, 瓦斯, 轻油等。Fluid: air, water, hot water, gas, light oil, etc.
2. 密封材料可选择NBR, VITON, EPDM(根据流体及流体温度选择)。
Seal material: NBR, VITON or EPDM (depending on fluid and fluid temperature).
3. 阀体材料可选择铜, 不锈钢SS304。Valve body material: copper or stainless steel SS304.
4. 另有常开型可选择。Normally open style is available.

先导型2通电磁阀 Pilot Operated 2-Port Solenoid Valve



KGD-XC

| 型号 Model | 接管口径 Port Size | 通孔直径 Orifice (mm) | 最低压差 Minimum Differential Pressure (MPa) | 最高压差 Maximum Differential Pressure (MPa) | | 切换方式 Operation |
|-------------|-------------------|-------------------------|--|--|-----|--|
| | | | | AC | DC | |
| KGD10XC-13- | G3/8" | 13 | 0.05 | 1.6 | 1.6 | 先导式 常闭型 Pilot operated, N.C. |
| KGD15XC-13- | G1/2" | 13 | 0.05 | 1.6 | 1.6 | |
| KGD20XC-20- | G3/4" | 20 | 0.05 | 1.6 | 1.6 | |
| KGD25XC-25- | G1" | 25 | 0.05 | 1.6 | 1.6 | |
| KGD32XC-35- | G1 1/4" | 35 | 0.05 | 1.6 | 1.6 | |
| KGD40XC-40- | G1 1/2" | 40 | 0.05 | 1.6 | 1.6 | |
| KGD50XC-50- | G2" | 50 | 0.05 | 1.6 | 1.6 | |

注 Notes: 1. 使用流体为空气, 水, 热水, 瓦斯, 轻油等。Fluid: air, water, hot water, gas, light oil, etc.
2. 密封材料可选择NBR, VITON, EPDM(根据流体及流体温度选择)。
Seal material: NBR, VITON or EPDM (depending on fluid and fluid temperature).
3. 阀体材料可选择铜, 不锈钢SS316。Valve body material: copper or stainless steel SS316.
4. 另有常开型可选择。Normally open style is available.

贴装阀 NAMUR Interface Solenoid Valve /角座阀 Angle Seat Valve

5通贴装阀 NAMUR Interface 5-Port Solenoid Valve



KNVF4130

| 型号 Model | 结构 Configuration | 接管口径 Port Size Rc(PT) | 有效截面积 Effective Sectional Area (mm ²) | 工作压力范围 Operating Pressure Range (MPa) | 切换方式 Operation |
|-------------|--------------------------------|-----------------------------|--|--|--------------------------|
| KNVF3130 | 单线圈 Single | 1/4" | 18 | 0.15~1.0 | 先导型 Pilot operated |
| KNVF3230 | 双线圈 Double | 1/4" | 18 | 0.2~1.0 | |
| KNVF4130 | 单线圈 Single | 1/4" | 32 | 0.15~1.0 | |
| KNVF4230 | 双线圈 Double | 1/4" | 32 | 0.2~1.0 | |
| KNVF4130-E | 单线圈,防爆 Single, explosion-proof | 1/4" | 32 | 0.15~1.0 | |
| KNVF4230-E | 双线圈,防爆 Double, explosion-proof | 1/4" | 32 | 0.2~1.0 | |

2通角座阀 单作用常闭 2-Port Angle Seat Valve Single Acting N.C.



| 型号 Model | 接管口径 Port Size | 通孔直径 Orifice (mm) | Kv (m ³ /h) | 允许压差范围 Permissible differential Pressure (MPa) | 执行压力范围 Pressure range of actuating (MPa) | 执行器 Actuator (mm) |
|-------------|-------------------|----------------------|---------------------------|--|--|-------------------------|
| KA10 | G3/8" | 13 | 4.7 | 0~1.6 | 0.3~1 | 50 |
| KA15 | G1/2" | 13 | 4.7 | 0~1.6 | 0.3~1 | 50 |
| KA20 | G3/4" | 18 | 9.5 | 0~1.6 | 0.3~1 | 50 |
| KA25 | G1" | 24 | 18.1 | 0~1.6 | 0.3~1 | 50 |
| KAX25 | G1" | 24 | 18.1 | 0~1.6 | 0.3~1 | 63 |
| KA32 | G1 1/4" | 31 | 23.1 | 0~1.6 | 0.3~1 | 63 |
| KA40 | G1 1/2" | 35 | 32.9 | 0~1.6 | 0.3~1 | 63 |
| KA50 | G2" | 45 | 52.8 | 0~1.0 | 0.3~1 | 63 |
| KAX50 | G2" | 45 | 52.8 | 0~1.6 | 0.3~1 | 80 |
| KA65 | G2 1/2" | 65 | 90 | 0~1.0 | 0.3~1 | 80 |
| KAX65 | G2 1/2" | 65 | 90 | 0~1.6 | 0.3~1 | 100 |

注Notes: 1. 适用流体为水, 水蒸汽, 中性液体或气体, 酒精, 油, 有机溶剂, 弱酸或者弱碱溶液。
Fluid: water, water steam, neutral liquid or gas, alcohol, oil, organic solvent, weak acid or weak base solution.
2. 密封件材质可选: PTFE, RTFE。Seal material: PTFE, RTFE.

2通角座阀 双作用 (无弹簧) 2-Port Angle Seat Valve Double Acting (without spring)



| 型号 Model | 接管口径 Port Size | 通孔直径 Orifice (mm) | Kv (m ³ /h) | 允许压差范围 Permissible differential Pressure (MPa) | 执行压力范围 Pressure range of actuating (MPa) | 执行器 Actuator (mm) |
|-------------|-------------------|----------------------|---------------------------|--|--|-------------------------|
| KA10D | G3/8" | 13 | 4.7 | 0~1.6 | 0~1 | 50 |
| KA15D | G1/2" | 13 | 4.7 | 0~1.6 | 0~1 | 50 |
| KA20D | G3/4" | 18 | 9.5 | 0~1.6 | 0~1 | 50 |
| KA25D | G1" | 24 | 18.1 | 0~1.6 | 0~1 | 50 |
| KAX25D | G1" | 24 | 18.1 | 0~1.6 | 0~1 | 63 |
| KA32D | G1 1/4" | 31 | 23.1 | 0~1.6 | 0~1 | 63 |
| KA40D | G1 1/2" | 35 | 32.9 | 0~1.6 | 0~1 | 63 |
| KA50D | G2" | 45 | 52.8 | 0~1.0 | 0~1 | 63 |
| KAX50D | G2" | 45 | 52.8 | 0~1.6 | 0~1 | 80 |
| KA65D | G2 1/2" | 65 | 90 | 0~1.0 | 0~1 | 80 |
| KAX65D | G2 1/2" | 65 | 90 | 0~1.6 | 0~1 | 100 |

注Notes: 1. 适用流体为水, 水蒸汽, 中性液体或气体, 酒精, 油, 有机溶剂, 弱酸或者弱碱溶液。
Fluid: water, water steam, neutral liquid or gas, alcohol, oil, organic solvent, weak acid or weak base solution.
2. 密封件材质可选: PTFE, RTFE。Seal material: PTFE, RTFE.

角座阀 Angle Seat Valve/气动执行器 Pneumatic Actuator

2通角座阀 单作用常闭 (防水锤) 2-Port Angle Seat Valve Single Acting N.C. (Water Hammer Resistant)



| 型号 Model | 接管口径 Port Size | 通孔直径 Orifice (mm) | Kv (m³/h) | 允许压差范围 Permissible Differential Pressure (MPa) | 执行压力范围 Pressure Range of Actuating (MPa) | 执行器 Actuator (mm) |
|-------------|-------------------|----------------------|--------------|--|--|-------------------------|
| KA10H | G3/8" | 13 | 4.7 | 0~1.6 | 0.45~1 | 50 |
| KA15H | G1/2" | 13 | 4.7 | 0~1.6 | 0.45~1 | 50 |
| KA20H | G3/4" | 18 | 9.5 | 0~1.2 | 0.45~1 | 50 |
| KA25H | G1" | 24 | 18.1 | 0~1.0 | 0.45~1 | 63 |
| KA32H | G1 1/4" | 31 | 23.1 | 0~0.6 | 0.45~1 | 63 |
| KAX32H | G1 1/4" | 31 | 23.1 | 0~1.2 | 0.4~1 | 80 |
| KA40H | G1 1/2" | 35 | 32.9 | 0~1.0 | 0.4~1 | 80 |
| KAX40H | G1 1/2" | 35 | 32.9 | 0~1.6 | 0.4~1 | 100 |
| KA50H | G2" | 45 | 52.8 | 0~0.6 | 0.4~1 | 80 |
| KAX50H | G2" | 45 | 52.8 | 0~1.0 | 0.4~1 | 100 |

注Notes: 1. 适用流体为水, 水蒸汽, 中性液体或气体, 酒精, 油, 有机溶剂, 弱酸或者弱碱溶液。
Fluid: water, water steam, neutral liquid or gas, alcohol, oil, organic solvent, weak acid or weak base solution.

2. 密封件材质可选: PTFE, RTFE。Seal material: PTFE, RTFE.

3. 反向安装, 适用于要求高的防水锤管道。Installed reversely, applicable to the pipe line where water hammer resistant required.

气动执行器 Pneumatic Actuator



| 型号 Model | 构造 Structure | 接管口径 Port Size | 输出扭矩 Output Torque (Nm) | 工作压力范围 Operating Pressure Range (MPa) | 使用流体 Fluid | 摆动角度 Rotation |
|-------------|--------------------------|-------------------|-------------------------------|---|---|------------------|
| KT032 | 齿条和齿轮 Rack and pinion | G1/8" | 7.5 | 0.25~0.8 | 干燥空气, 非腐蚀性 气体, 轻油 Dry air, non- corrosive gas, light oil | 90° |
| KT052 | | G1/4" | 20.8 | 0.25~0.8 | | |
| KT063 | | G1/4" | 36.6 | 0.25~0.8 | | |
| KT075 | | G1/4" | 58.8 | 0.25~0.8 | | |
| KT083 | | G1/4" | 74.2 | 0.25~0.8 | | |
| KT092 | | G1/4" | 113.7 | 0.25~0.8 | | |
| KT105 | | G1/4" | 169.7 | 0.25~0.8 | | |
| KT125 | | G1/4" | 291.5 | 0.25~0.8 | | |
| KT140 | | G1/4" | 438.7 | 0.25~0.8 | | |
| KT160 | | G1/4" | 668.5 | 0.25~0.8 | | |
| KT190 | | G1/4" | 1077.4 | 0.25~0.8 | | |
| KT210 | | G1/4" | 1480.6 | 0.25~0.8 | | |
| KT240 | | G3/8" | 2320.8 | 0.25~0.8 | | |
| KT270 | | G1/2" | 3263.6 | 0.25~0.8 | | |

注Notes: 1. 有双作用和单作用(弹簧压回)可选。Double acting and single acting (spring return) are available.

2. 直接安装于适用阀门, 用于推动阀门的开关。Directly install on and drive applicable valves.

3. 表格中的输出扭矩为压力在0.5MPa时双作用执行器的输出扭矩。
Output torque in the form is for double acting style at 0.5 MPa pressure.

微型气缸 Miniature Air Cylinder

微型气缸 Miniature Air Cylinder Series GSP (Ø4~Ø6)



| | | | |
|---------|-------------------------------|--|---------|
| 缸径 | Bore (mm) | 4 | 6 |
| 行程 | Stroke (mm) | 5 10 15 | 5 10 15 |
| 接管口径 | Port Size Rc(PT) | 适用气管U0425 Fit tubing U0425 | M5×0.8 |
| 动作形式 | Action | 单动(弹簧压回) Single acting (Spring return) | |
| 流体 | Fluid | 洁净空气 Clean air | |
| 环境及流体温度 | Ambient and Fluid Temperature | 5~60°C | |
| 工作压力范围 | Operating Pressure (MPa) | 0.3~0.7 | |
| 保证耐压力 | Proof Pressure (MPa) | 1.0 | |
| 缓冲 | Cushion | 无 None | |

微型气缸 Miniature Air Cylinder Series CT (Ø6~Ø15)



| | | | | |
|---------|-------------------------------|--|---------|---------|
| 缸径 | Bore (mm) | 6 | 10 | 15 |
| 行程 | Stroke (mm) | 5 10 15 | 5 10 15 | 5 10 15 |
| 接管口径 | Port Size Rc(PT) | M5×0.8 | | |
| 动作形式 | Action | 单动(弹簧压回) Single acting (Spring return) | | |
| 流体 | Fluid | 洁净空气 Clean air | | |
| 环境及流体温度 | Ambient and Fluid Temperature | 5~60°C | | |
| 工作压力范围 | Operating Pressure (MPa) | 0.2~0.7 | | |
| 保证耐压力 | Proof Pressure (MPa) | 1.0 | | |
| 缓冲 | Cushion | 无 None | | |

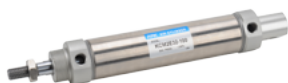
标准微型气缸 Standard Miniature Air Cylinder Series KCJ2 (Ø10~Ø16)



| | | | |
|---------|-------------------------------|---|--------|
| 缸径 | Bore (mm) | 10 | 16 |
| 标准行程 | Standard Stroke (mm) | 15~150 | 15~200 |
| 接管口径 | Port Size Rc(PT) | M5×0.8 | |
| 动作形式 | Action | 双动, 单动 Double acting, single acting | |
| 流体 | Fluid | 洁净空气 Clean air | |
| 环境及流体温度 | Ambient and Fluid Temperature | -5~60°C (未冻结 No freezing) | |
| 工作压力范围 | Operating Pressure (MPa) | 0.06~0.7 | |
| 保证耐压力 | Proof Pressure (MPa) | 1.0 | |
| 活塞速度 | Piston Speed | 50~750 mm/s | |
| 缓冲 | Cushion | 橡胶缓冲 Rubber bumper | |
| 磁性开关 | Auto Switch | D-C73K/ D-Z80K/ D-Z80VK 环带安装式 Band mounting | |

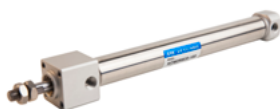
标准气缸 Standard Air Cylinder

小型气缸 Small Bore Size Air Cylinder Series KCM2 (Ø20~Ø40)



| 缸径 | Bore (mm) | 20 | 25 | 32 | 40 |
|---------|-------------------------------|--|------|------|------|
| 标准行程 | Standard Stroke (mm) | 25~300 | | | |
| 接管口径 | Port Size Rc(PT) | 1/8" | 1/8" | 1/8" | 1/4" |
| 动作形式 | Action | 双动, 单动 Double acting, single acting | | | |
| 流体 | Fluid | 洁净空气 Clean air | | | |
| 环境及流体温度 | Ambient and Fluid Temperature | -5~60°C (未冻结 No freezing) | | | |
| 工作压力范围 | Operating Pressure (MPa) | 0.05~1.0 | | | |
| 保证耐压力 | Proof Pressure (MPa) | 1.5 | | | |
| 活塞速度 | Piston Speed | 50~750 mm/s | | | |
| 缓冲 | Cushion | 橡胶缓冲 Rubber bumper, 气缓冲 Air cushion | | | |
| 磁性开关 | Auto Switch | D-C73K/ D-Z80K/ D-Z80VK, 环带安装式 Band mounting | | | |

小型气缸/直接安装 Small Bore Size Air Cylinder/ Direct Mount Series KCM2R (Ø20~Ø40)



| 缸径 | Bore (mm) | 20 | 25 | 32 | 40 |
|---------|-------------------------------|--|--------|--------|------|
| 标准行程 | Standard Stroke (mm) | 25~150 | 25~200 | 25~300 | |
| 接管口径 | Port Size Rc(PT) | 1/8" | 1/8" | 1/8" | 1/4" |
| 动作形式 | Action | 双动 Double acting | | | |
| 流体 | Fluid | 洁净空气 Clean air | | | |
| 环境及流体温度 | Ambient and Fluid Temperature | -5~60°C (未冻结 No freezing) | | | |
| 工作压力范围 | Operating Pressure (MPa) | 0.05~1.0 | | | |
| 保证耐压力 | Proof Pressure (MPa) | 1.5 | | | |
| 活塞速度 | Piston Speed | 50~500 mm/s | | | |
| 缓冲 | Cushion | 橡胶缓冲 Rubber bumper | | | |
| 磁性开关 | Auto Switch | D-C73K/ D-Z80K/ D-Z80VK, 环带安装式 Band mounting | | | |

轻巧型气缸 Light Air Cylinder Series KCG1 (Ø20~Ø63)



| 缸径 | Bore (mm) | 20 | 25 | 32 | 40 | 50 | 63 |
|---------|-------------------------------|-----------------------------|--------|--------|--------|--------|--------|
| 标准行程 | Standard Stroke (mm) | 25~200 | 25~300 | 25~300 | 25~300 | 25~300 | 25~300 |
| 接管口径 | Port Size Rc(PT) | 1/8" | 1/8" | 1/8" | 1/8" | 1/4" | 1/4" |
| 动作形式 | Action | 双动 Double Acting | | | | | |
| 流体 | Fluid | 洁净空气 Clean Air | | | | | |
| 环境及流体温度 | Ambient and Fluid Temperature | -5~60°C (未冻结 No freezing) | | | | | |
| 工作压力范围 | Operating Pressure (MPa) | 0.05~1.0 | | | | | |
| 保证耐压力 | Proof Pressure (MPa) | 1.5 | | | | | |
| 活塞速度 | Piston Speed | 50~500 mm/s | | | | | |
| 缓冲 | Cushion | 橡胶缓冲 Rubber bumper | | | | | |
| 磁性开关 | Auto Switch | D-C73K, 环带安装式 Band mounting | | | | | |

标准气缸 Standard Air Cylinder

中型气缸 Medium Bore Size Air Cylinder Series KMB (Ø40~Ø100)



| 缸径 | Bore (mm) | 40 | 50 | 63 | 80 | 100 |
|---------|-------------------------------|---------------------------|--------|--------|--------|--------|
| 标准行程 | Standard Stroke (mm) | 25~500 | 25~600 | 25~600 | 25~800 | 25~800 |
| 接管口径 | Port Size Rc(PT) | 1/4" | 1/4" | 3/8" | 3/8" | 1/2" |
| 动作形式 | Action | 双动 Double acting | | | | |
| 流体 | Fluid | 洁净空气 Clean air | | | | |
| 环境及流体温度 | Ambient and Fluid Temperature | -5~60°C (未冻结 No freezing) | | | | |
| 工作压力范围 | Operating Pressure (MPa) | 0.05~1.0 | | | | |
| 保证耐压力 | Proof Pressure (MPa) | 1.5 | | | | |
| 活塞速度 | Piston Speed | 50~1000 mm/s | | | | |
| 缓冲 | Cushion | 气缓冲 Air cushion | | | | |
| 磁性开关 | Auto Switch | D-A54K | | | | |

中型气缸 Medium Bore Size Air Cylinder Series KCA1 (Ø40~Ø100)



| 缸径 | Bore (mm) | 40 | 50 | 63 | 80 | 100 |
|---------|-------------------------------|---------------------------|--------|--------|--------|--------|
| 标准行程 | Standard Stroke (mm) | 25~500 | 25~600 | 25~600 | 25~800 | 25~800 |
| 接管口径 | Port Size Rc(PT) | 1/4" | 3/8" | 3/8" | 1/2" | 1/2" |
| 动作形式 | Action | 双动 Double acting | | | | |
| 流体 | Fluid | 洁净空气 Clean air | | | | |
| 环境及流体温度 | Ambient and Fluid Temperature | -5~60°C (未冻结 No freezing) | | | | |
| 工作压力范围 | Operating Pressure (MPa) | 0.05~1.0 | | | | |
| 保证耐压力 | Proof Pressure (MPa) | 1.5 | | | | |
| 活塞速度 | Piston Speed | 50~700 mm/s | | | | |
| 缓冲 | Cushion | 气缓冲 Air cushion | | | | |
| 磁性开关 | Auto Switch | D-A54K | | | | |

注: 可定制耐高温气缸, 温度达150°C。
Note: Model of heat resistant to elevated temperature as high as 150°C is available.

大型气缸 Large Bore Size Air Cylinder Series KCS1 (Ø125~Ø400)



| 缸径 | Bore (mm) | 125 | 140 | 160 | 180 | 200 | 250 | 300 | 350 | 400 |
|---------|-------------------------------|---------------------------|------|------|------|--------------------|-----|-----|--------|--------|
| 标准行程 | Standard Stroke (mm) | 25~1200 | | | | | | | | |
| 接管口径 | Port Size Rc(PT) | 1/2" | 1/2" | 3/4" | 3/4" | 3/4" | 1" | 1" | 1 1/4" | 1 1/4" |
| 动作形式 | Action | 双动 Double acting | | | | | | | | |
| 流体 | Fluid | 洁净空气 Clean air | | | | | | | | |
| 环境及流体温度 | Ambient and Fluid Temperature | -5~60°C (未冻结 No freezing) | | | | | | | | |
| 工作压力范围 | Operating Pressure (MPa) | 0.08~1.0 | | | | | | | | |
| 保证耐压力 | Proof Pressure (MPa) | 1.5 | | | | | | | | |
| 活塞速度 | Piston Speed | 50~500 mm/s | | | | | | | | |
| 缓冲 | Cushion | 气缓冲 Air cushion | | | | | | | | |
| 磁性开关 | Auto Switch | D-A54K | | | | 不适用 Not applicable | | | | |
| 缸筒材质 | Material of Barrel | 铝合金 Aluminium alloy | | | | 碳钢 Carbon steel | | | | |

注: 缸径Ø180, Ø200可定制铝合金缸筒, 适配磁性开关。
Note: Aluminium alloy barrel of Ø180, Ø200 bore size can be customized for the application of auto switch.

ISO标准气缸 ISO Standard Air Cylinder

ISO6432标准气缸 ISO6432 Air Cylinder Series KC85 (Ø8~Ø25)



| | | | | | | | | |
|------|------------------|-------------------------------|--|--------|--------|--|--------|--------|
| | 缸径 | Bore (mm) | 8 | 10 | 12 | 16 | 20 | 25 |
| 标准行程 | 单动 Single acting | Standard Stroke (mm) | - | - | - | 15~100 | 15~150 | 15~150 |
| | 双动 Double acting | | 10~100 | 10~100 | 10~200 | 15~500 | 15~500 | 15~500 |
| | 接管口径 | Port Size | M5×0.8 | M5×0.8 | M5×0.8 | M5×0.8 | G1/8" | G1/8" |
| | 动作形式 | Action | 双动 Double acting | | | 双动, 单动 Double acting, single acting | | |
| | 流体 | Fluid | 洁净空气 Clean air | | | | | |
| | 环境及流体温度 | Ambient and Fluid Temperature | -5~60℃ (未冻结 No freezing) | | | | | |
| | 工作压力范围 | Operating Pressure (MPa) | 0.05~1.0 | | | | | |
| | 保证耐压力 | Proof Pressure (MPa) | 1.5 | | | | | |
| | 活塞速度 | Piston Speed | 50~500 mm/s | | | | | |
| | 缓冲 | Cushion | 橡胶缓冲 Rubber bumper, 气缓冲 Air cushion | | | | | |
| | 磁性开关 | Auto Switch | D-C73K/ D-Z80K/ D-Z80VK, 环带安装式 Band mounting | | | | | |

ISO15552标准气缸 ISO15552 Air Cylinder Series KCP95 (Ø32~Ø125)



| | | | | | | | | |
|---------|-------------------------------|---------------------------|--------|--------|--------|--------|--------|--------|
| 缸径 | Bore (mm) | 32 | 40 | 50 | 63 | 80 | 100 | 125 |
| 标准行程 | Standard Stroke (mm) | 25~500 | 25~500 | 25~600 | 25~600 | 25~800 | 25~800 | 25~800 |
| 接管口径 | Port Size | G1/8" | G1/4" | G1/4" | G3/8" | G3/8" | G1/2" | G1/2" |
| 动作形式 | Action | 双动 Double acting | | | | | | |
| 流体 | Fluid | 洁净空气 Clean air | | | | | | |
| 环境及流体温度 | Ambient and Fluid Temperature | -5~60°C (未冻结 No freezing) | | | | | | |
| 工作压力范围 | Operating Pressure (MPa) | 0.05~1.0 | | | | | | |
| 保证耐压力 | Proof Pressure (MPa) | 1.5 | | | | | | |
| 活塞速度 | Piston Speed | 50~1000 mm/s | | | | | | |
| 缓冲 | Cushion | 气缓冲 Air cushion | | | | | | |
| 磁性开关 | Auto Switch | D-Z73K | | | | | | |

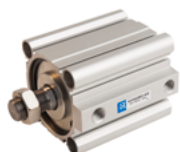
ISO15552标准气缸 ISO15552 Air Cylinder Series KC95 (Ø160~Ø320)



| | | | | | |
|---------|-------------------------------|---------------------------|--------------------|-----|-----|
| 缸径 | Bore (mm) | 160 | 200 | 250 | 320 |
| 标准行程 | Standard Stroke (mm) | 25~1500 | | | |
| 接管口径 | Port Size | G3/4" | G3/4" | G1" | G1" |
| 动作形式 | Action | 双动 Double acting | | | |
| 流体 | Fluid | 洁净空气 Clean air | | | |
| 环境及流体温度 | Ambient and Fluid Temperature | -5~60°C (未冻结 No freezing) | | | |
| 工作压力范围 | Operating Pressure (MPa) | 0.1~0.9 | | | |
| 保证耐压力 | Proof Pressure (MPa) | 1.35 | | | |
| 活塞速度 | Piston Speed | 50~800 mm/s | | | |
| 缓冲 | Cushion | 气缓冲 Air cushion | | | |
| 磁性开关 | Auto Switch | D-A54K | 不适用 Not applicable | | |

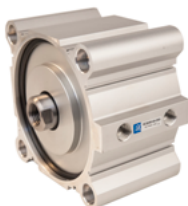
气缸 Air Cylinder

薄型气缸 Compact Air Cylinder Series KCQ2 (Ø12~Ø100)



| 缸径 | Bore (mm) | 12 | 16 | 20 | 25 | 32 | 40 | 50 | 63 | 80 | 100 |
|---------|-------------------------------|-------------------------------------|----|------|----|-------|---------|--------|----|------|-----|
| 标准行程 | Standard Stroke (mm) | 5~30 | | 5~50 | | 5~100 | | 10~100 | | | |
| 长行程 | Long Stroke(mm) | - | | | | | 125~300 | | | | |
| 接管口径 | Port Size Rc(PT) | M5×0.8 | | | | 1/8" | | 1/4" | | 3/8" | |
| 动作形式 | Action | 双动, 单动 Double acting, single acting | | | | | | | | | |
| 流体 | Fluid | 洁净空气 Clean air | | | | | | | | | |
| 环境及流体温度 | Ambient and Fluid Temperature | -5~60℃ (未冻结 No freezing) | | | | | | | | | |
| 工作压力范围 | Operating Pressure (MPa) | 0.05~1.0 | | | | | | | | | |
| 保证耐压力 | Proof Pressure (MPa) | 1.5 | | | | | | | | | |
| 活塞速度 | Piston Speed | 50~500 mm/s | | | | | | | | | |
| 缓冲 | Cushion | 橡胶缓冲 Rubber bumper | | | | | | | | | |
| 磁性开关 | Auto Switch | D-Z80K , D-Z80VK | | | | | | | | | |

大缸径薄型气缸 Large Bore Size Compact Air Cylinder Series KCQ2 (Ø125~Ø200)



| 缸径 | Bore (mm) | 125 | 140 | 160 | 200 |
|---------|-------------------------------|---------------------------|-----------------|-----|-------------|
| 标准行程 | Standard Stroke (mm) | 10~300 | | | |
| 接管口径 | Port Size Rc(PT) | 3/8" | | | 1/2" |
| 动作形式 | Action | 双动 Double acting | | | |
| 流体 | Fluid | 洁净空气 Clean air | | | |
| 环境及流体温度 | Ambient and Fluid Temperature | -5~60°C (未冻结 No freezing) | | | |
| 工作压力范围 | Operating Pressure (MPa) | 0.05~1.0 | | | 0.05~0.7 |
| 保证耐压力 | Proof Pressure (MPa) | 1.5 | | | 1.05 |
| 活塞速度 | Piston Speed | 50~500 mm/s | | | 20~400 mm/s |
| 缓冲 | Cushion | 橡胶缓冲 Rubber bumper | | | |
| 磁性开关 | Auto Switch | D-A73K | D-Z80K, D-Z80VK | | |

自由安装气缸 Free Mount Air Cylinder Series KCU (Ø6~Ø32)



| 缸径 | Bore (mm) | 6 | 10 | 16 | 20 | 25 | 32 |
|---------|-------------------------------|-------------------------------------|--------|--------|--------|--------|------|
| 标准行程 | Standard Stroke (mm) | 5~35 | 5~35 | 5~50 | 5~60 | 5~60 | 5~60 |
| 接管口径 | Port Size Rc(PT) | M5×0.8 | M5×0.8 | M5×0.8 | M5×0.8 | M5×0.8 | 1/8" |
| 动作形式 | Action | 双动, 单动 Double acting, single acting | | | | | |
| 流体 | Fluid | 洁净空气 Clean air | | | | | |
| 环境及流体温度 | Ambient and Fluid Temperature | -5~60°C (未冻结 No freezing) | | | | | |
| 工作压力范围 | Operating Pressure (MPa) | 0.05~1.0 | | | | | |
| 保证耐压力 | Proof Pressure (MPa) | 1.5 | | | | | |
| 活塞速度 | Piston Speed | 50~500 mm/s | | | | | |
| 缓冲 | Cushion | 橡胶缓冲 Rubber bumper | | | | | |
| 磁性开关 | Auto Switch | D-A90K | | | | | |

气缸 Air Cylinder

导杆气缸 Guide Air Cylinder Series KMGPM/L (Ø12~Ø63)



| 缸径 | Bore (mm) | 12 | 16 | 20 | 25 | 32 | 40 | 50 | 63 |
|---------|-------------------------------|---------------------------|----|--------|------|------|--------|------|------|
| 标准行程 | Standard Stroke (mm) | 10~100 | | 20~200 | | | 25~200 | | |
| 接管口径 | Port Size Rc(PT) | M5×0.8 | | 1/8" | 1/8" | 1/8" | 1/8" | 1/4" | 1/4" |
| 动作形式 | Action | 双动 Double acting | | | | | | | |
| 流体 | Fluid | 洁净空气 Clean air | | | | | | | |
| 环境及流体温度 | Ambient and Fluid Temperature | -5~60°C (未冻结 No freezing) | | | | | | | |
| 工作压力范围 | Operating Pressure (MPa) | 0.1~1.0 | | | | | | | |
| 保证耐压力 | Proof Pressure (MPa) | 1.5 | | | | | | | |
| 活塞速度 | Piston Speed | 50~500 mm/s | | | | | | | |
| 缓冲 | Cushion | 橡胶缓冲 Rubber bumper | | | | | | | |
| 磁性开关 | Auto Switch | D-Z73K | | | | | | | |

双缸气缸 Dual Rod Air Cylinder Series KCXSM/L (Ø10~Ø32)



| 缸径 | Bore (mm) | 10 | 15 | 20 | 25 | 32 |
|---------|-------------------------------|---------------------------|--------|--------|--------|--------|
| 标准行程 | Standard Stroke (mm) | 10~75 | 10~100 | 10~100 | 10~100 | 10~100 |
| 接管口径 | Port Size Rc(PT) | M5×0.8 | M5×0.8 | M5×0.8 | 1/8" | 1/8" |
| 动作形式 | Action | 双动 Double acting | | | | |
| 流体 | Fluid | 洁净空气 Clean air | | | | |
| 环境及流体温度 | Ambient and Fluid Temperature | -5~60°C (未冻结 No freezing) | | | | |
| 工作压力范围 | Operating Pressure (MPa) | 0.05~0.7 | | | | |
| 保证耐压力 | Proof Pressure (MPa) | 1.0 | | | | |
| 活塞速度 | Piston Speed | 30~600 mm/s | | | | |
| 缓冲 | Cushion | 橡胶缓冲 Rubber bumper | | | | |
| 磁性开关 | Auto Switch | D-Z73K | | | | |

双出杆双缸气缸 Dual Rod Air Cylinder /Double Rod Series KCXSW (Ø10~Ø25)



| 缸径 | Bore (mm) | 10 | 15 | 20 | 25 |
|---------|-------------------------------|---------------------------|--------|--------|--------|
| 标准行程 | Standard Stroke (mm) | 10~100 | 10~150 | 10~150 | 10~150 |
| 接管口径 | Port Size Rc(PT) | M5×0.8 | M5×0.8 | M5×0.8 | 1/8" |
| 动作形式 | Action | 双动 Double acting | | | |
| 流体 | Fluid | 洁净空气 Clean air | | | |
| 环境及流体温度 | Ambient and Fluid Temperature | -5~60°C (未冻结 No freezing) | | | |
| 工作压力范围 | Operating Pressure (MPa) | 0.1~0.7 | | | |
| 保证耐压力 | Proof Pressure (MPa) | 1.0 | | | |
| 活塞速度 | Piston Speed | 50~500 mm/s | | | |
| 缓冲 | Cushion | 橡胶缓冲 Rubber bumper | | | |
| 磁性开关 | Auto Switch | D-Z73K | | | |

气缸 Air Cylinder

平板式气缸 Plate Air Cylinder Series KMUB (Ø40~Ø50)



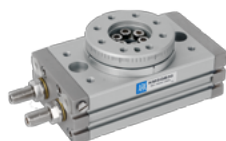
| 缸径 | Bore (mm) | 25 | 32 | 40 | 50 | 63 |
|---------|-------------------------------|---------------------------|-------|-------|-------|-------|
| 标准行程 | Standard Stroke (mm) | 5~300 | | | | |
| 接管口径 | Port Size Rc(PT) | M5x0.8 | 1/8" | 1/8" | 1/4" | 1/4" |
| 动作形式 | Action | 双动 Double acting | | | | |
| 流体 | Fluid | 洁净空气 Clean air | | | | |
| 环境及流体温度 | Ambient and Fluid Temperature | -5~60°C (未冻结 No freezing) | | | | |
| 工作压力范围 | Operating Pressure (MPa) | 0.05~0.7 | | | | |
| 保证耐压力 | Proof Pressure (MPa) | 1.05 | | | | |
| 活塞速度 | Piston Speed | 50~500 mm/s | | | | |
| 杆不回转精度 | Rod Non-rotating Accuracy | ±1° | ±0.8° | ±0.5° | ±0.5° | ±0.5° |
| 缓冲 | Cushion | 橡胶缓冲 Rubber bumper | | | | |
| 磁性开关 | Auto Switch | D-Z80K, D-Z80VK | | | | |

磁耦式无杆气缸 Magnetically Coupled Rodless Air Cylinder Series KCY3B (Ø15~Ø50)



| 缸径 | Bore (mm) | 15 | 20 | 25 | 32 | 40 |
|---------|-------------------------------|--------------------------|----------|-----|-----|----------|
| 标准行程 | Standard Stroke (mm) | 50~500 | 100~800 | | | 100~1000 |
| 接管口径 | Port Size Rc(PT) | M5×0.8 | 1/8" | | | 1/4" |
| 动作形式 | Action | 双动 Double acting | | | | |
| 流体 | Fluid | 洁净空气 Clean air | | | | |
| 环境及流体温度 | Ambient and Fluid Temperature | -5~60℃ (未冻结 No freezing) | | | | |
| 工作压力范围 | Operating Pressure (MPa) | 0.16~0.7 | 0.15~0.7 | | | |
| 保证耐压力 | Proof Pressure (MPa) | 1.05 | | | | |
| 磁性保持力 | Magnet Holding Force (N) | 137 | 231 | 363 | 588 | 922 |
| 活塞速度 | Piston Speed | 50~500 mm/s | | | | |
| 缓冲 | Cushion | 橡胶缓冲 Rubber bumper | | | | |

旋转气缸 Rotary Table Series KMSQB (Ø10~Ø200)



| | | | | | | | | |
|---------|-------------------------------|-----------------------------|----------------------|------|------|------|------|------|
| 尺寸 | Size (mm) | 10 | 20 | 30 | 50 | 70 | 100 | 200 |
| 接管口径 | Port Size Rc(PT) | M5×0.8 | M5×0.8 | 1/8" | 1/8" | 1/8" | 1/8" | 1/8" |
| 活塞直径 | Piston Diameter (mm) | 15 | 18 | 21 | 25 | 28 | 32 | 40 |
| 流体 | Fluid | 洁净空气 Clean air | | | | | | |
| 环境及流体温度 | Ambient and Fluid Temperature | 0~60℃ (未凝结 No condensation) | | | | | | |
| 工作压力范围 | Operating Pressure (MPa) | 调整螺丝 Adjusting bolt | 0.1~1.0 | | | | | |
| | | 油压缓冲器 Shock absorber | 0.1~0.6 | | | | | |
| 旋转角度范围 | Rotation Angle Range | 0°~190° | | | | | | |
| 缓冲 | Cushion | 调整螺丝 Adjusting bolt | 橡胶缓冲 Rubber bumper | | | | | |
| | | 油压缓冲器 Shock absorber | 油压缓冲器 Shock absorber | | | | | |
| 磁性开关 | Auto Switch | D-Z80K, D-Z80VK | | | | | | |

滑台气缸 Air Slide Table

滑台气缸 (交叉滚柱导轨) Air Slide Table (Cross Roller Guide) Series KMXS (Ø6~Ø25)



| 缸径 | Bore (mm) | 6 | 8 | 12 | 16 | 20 | 25 |
|---------|-------------------------------|---|--------|--------|--------|--------|--------|
| 标准行程 | Standard Stroke (mm) | 10~50 | 10~75 | 10~100 | 10~125 | 10~150 | 10~150 |
| 接管口径 | Port Size Rc(PT) | M3×0.5 | M5×0.8 | M5×0.8 | M5×0.8 | 1/8" | 1/8" |
| 动作形式 | Action | 双动 Double acting | | | | | |
| 流体 | Fluid | 洁净空气 Clean air | | | | | |
| 环境及流体温度 | Ambient and Fluid Temperature | -5~60°C (未冻结 No freezing) | | | | | |
| 工作压力范围 | Operating Pressure (MPa) | 0.15~0.7 | | | | | |
| 保证耐压力 | Proof Pressure (MPa) | 1.05 | | | | | |
| 活塞速度 | Piston Speed | 50~500 mm/s | | | | | |
| 缓冲 | Cushion | 橡胶缓冲(标准) Rubber bumper (Standard), 油压缓冲器(可选) Shock absorber (Option) | | | | | |
| 磁性开关 | Auto Switch | D-Z80K, D-Z80VK | | | | | |

滑台气缸 (侧轨) Air Slide Table (One Side Guide) Series KMXH (Ø6~Ø20)



| 缸径 | Bore (mm) | 6 | 10 | 16 | 20 |
|---------|-------------------------------|---------------------------|--------|--------|--------|
| 标准行程 | Standard Stroke (mm) | 5~60 | | | |
| 接管口径 | Port Size Rc(PT) | M5×0.8 | M5×0.8 | M5×0.8 | M5×0.8 |
| 动作形式 | Action | 双动 Double acting | | | |
| 流体 | Fluid | 洁净空气 Clean air | | | |
| 环境及流体温度 | Ambient and Fluid Temperature | -5~60°C (未冻结 No freezing) | | | |
| 最低使用压力 | Min. Operating Pressure (MPa) | 0.15 | 0.06 | 0.06 | 0.05 |
| 最高使用压力 | Max. Operating Pressure (MPa) | 0.7 | | | |
| 保证耐压力 | Proof Pressure (MPa) | 1.05 | | | |
| 活塞速度 | Piston Speed | 50~500 mm/s | | | |
| 缓冲 | Cushion | 橡胶缓冲 Rubber bumper | | | |
| 磁性开关 | Auto Switch | D-Z80K, D-Z80VK | | | |

滑台气缸 (循环直线导轨) Air Slide Table (Recirculating Linear Guide) Series KMXQ (Ø6~Ø25)



| 缸径 | Bore (mm) | 6 | 8 | 12 | 16 | 20 | 25 |
|---------|-------------------------------|---|--------|--------|--------|--------|--------|
| 标准行程 | Standard Stroke (mm) | 10~50 | 10~75 | 10~100 | 10~125 | 10~150 | 10~150 |
| 接管口径 | Port Size Rc(PT) | M5×0.8 | M5×0.8 | M5×0.8 | M5×0.8 | 1/8" | 1/8" |
| 动作形式 | Action | 双动 Double acting | | | | | |
| 流体 | Fluid | 洁净空气 Clean air | | | | | |
| 环境及流体温度 | Ambient and Fluid Temperature | -5~60°C (未冻结 No freezing) | | | | | |
| 工作压力范围 | Operating Pressure (MPa) | 0.15~0.7 | | | | | |
| 保证耐压力 | Proof Pressure (MPa) | 1.05 | | | | | |
| 活塞速度 | Piston Speed | 50~500 mm/s | | | | | |
| 缓冲 | Cushion | 橡胶缓冲(标准) Rubber bumper (Standard), 油压缓冲器(可选) Shock absorber (Option) | | | | | |
| 磁性开关 | Auto Switch | D-Z80K, D-Z80VK | | | | | |

气爪 Air Gripper

平行开闭气爪 Parallel Style Air Gripper Series KMHZ2 (Ø6~Ø40)



| | | | | | | | | |
|---------|-------------------------------|-------------------------------------|-------------------------|----------------------------|--------|--------|--------|-----------|
| 缸径 | Bore (mm) | 6 | 10 | 16 | 20 | 25 | 32 | 40 |
| 开闭行程 | Stroke (mm) | 4 | 4 | 6 | 10 | 14 | 22 | 30 |
| 接管口径 | Port Size Rc(PT) | M3×0.5 | M3×0.5 | M5×0.8 | M5×0.8 | M5×0.8 | M5×0.8 | M5×0.8 |
| 动作形式 | Action | 双动, 单动 Double acting, single acting | | | | | | |
| 流体 | Fluid | 洁净空气 Clean air | | | | | | |
| 环境及流体温度 | Ambient and Fluid Temperature | -5~60℃ (未冻结 No freezing) | | | | | | |
| 工作压力范围 | Operating Pressure (MPa) | 双动 Double acting 0.2~0.7 | | 双动 Double acting: 0.1~0.7 | | | | |
| | | 单动 Single acting 0.35~0.7 | | 单动 Single acting: 0.25~0.7 | | | | |
| 最高动作频率 | Max. Operating Frequency | 180 c.p.m. | | | | | | 60 c.p.m. |
| 磁性开关 | Auto Switch | D-Z80K | D-Z73K, D-Z80k, D-Z80VK | | | | | |

平行开闭 三爪气爪 3-Finger Parallel Style Air Gripper Series KMHS3 (Ø16~Ø125)



| | | | | | | | | | | | | |
|---------|-------------------------------|---------------------------|--------|----|----|-----------|-----|-----|------|-----------|------|------|
| 缸径 | Bore (mm) | 16 | 20 | 25 | 32 | 40 | 50 | 63 | 80 | 100 | 125 | |
| 开闭行程 | Stroke (mm) | 4 | 4 | 6 | 8 | 8 | 12 | 16 | 20 | 24 | 32 | |
| *有效夹持力 | Effective Gripping Force (N) | 开侧 External | 14 | 25 | 42 | 74 | 118 | 187 | 335 | 500 | 750 | 1270 |
| | | 闭侧 Internal | 16 | 28 | 47 | 82 | 130 | 204 | 359 | 525 | 780 | 1320 |
| 接管口径 | Port Size Rc(PT) | M3×0.5 | M5×0.8 | | | | | | 1/8" | 1/4" | 3/8" | |
| 动作形式 | Action | 双动 Double acting | | | | | | | | | | |
| 流体 | Fluid | 洁净空气 Clean air | | | | | | | | | | |
| 环境及流体温度 | Ambient and Fluid Temperature | -5~60°C (未冻结 No freezing) | | | | | | | | | | |
| 工作压力范围 | Operating Pressure (MPa) | 0.2~0.6 | | | | 0.1~0.6 | | | | | | |
| 最高动作频率 | Max. Operating Frequency | 120 c.p.m. | | | | 60 c.p.m. | | | | 30 c.p.m. | | |
| 磁性开关 | Auto Switch | D-Z80K | | | | D-Z73K | | | | | | |

*注: 压力0.5 MPa, 夹持点在距离L=20 mm (Ø16~Ø25), L=30 mm (Ø32~Ø63), L=50 mm (Ø80~Ø125)时的数值。
*Note: The values are for that when pressure at 0.5 MPa and gripping point L=20 mm (Ø16~Ø25), L=30 mm (Ø32~Ø63), L=50 mm (Ø80~Ø125).

宽型气爪 Wide Opening Air Gripper Series KMHL2 (Ø10~Ø40)



| | | | | | | | |
|---------|-----------------------------------|---------------------------|------------|-------------|-------------|-------------|-------------|
| 缸径 | Bore (mm) | 10 | 16 | 20 | 25 | 32 | 40 |
| 开闭行程 | Stroke (mm) | 20 40 60 | 30 60 80 | 40 80 100 | 50 100 120 | 70 120 160 | 100 160 200 |
| 闭合宽度 | Closed Width (mm) | 56 78 96 | 68 110 130 | 82 142 162 | 100 182 200 | 150 198 242 | 188 246 286 |
| 打开宽度 | Open Width (mm) | 76 117 156 | 98 170 210 | 122 222 262 | 150 282 320 | 220 318 402 | 288 406 486 |
| 接管口径 | Port Size Rc(PT) | M5×0.8 | M5×0.8 | M5×0.8 | M5×0.8 | 1/8" | 1/8" |
| 动作形式 | Action | 双动 Double acting | | | | | |
| 流体 | Fluid | 洁净空气 Clean air | | | | | |
| 环境及流体温度 | Ambient and Fluid Temperature | -5~60°C (未冻结 No freezing) | | | | | |
| 使用压力范围 | Operating Pressure (MPa) | 0.15~0.6 | | 0.1~0.6 | | | |
| 最高动作频率 | Max. Operating Frequency (c.p.m.) | 60 40 40 | 60 40 40 | 60 40 40 | 60 40 40 | 30 20 20 | 30 20 20 |
| 磁性开关 | Auto Switch | D-Z73K | | | | | |

气爪 Air Gripper

角度开闭气爪 Angular Style Air Gripper Series KMHC2 (Ø6~Ø32)



| | | | | | | | |
|---------|-------------------------------|-------------------------------------|----------|----------|--------|--------|--------|
| 缸径 | Bore (mm) | 6 | 10 | 16 | 20 | 25 | 32 |
| 开闭角度 | Opening/Closing Angle | -10°~30° | | | | | |
| 接管口径 | Port Size Rc(PT) | M3×0.5 | M3×0.5 | M5×0.8 | M5×0.8 | M5×0.8 | M5×0.8 |
| 动作形式 | Action | 双动, 单动 Double acting, single acting | | | | | |
| 流体 | Fluid | 洁净空气 Clean air | | | | | |
| 环境及流体温度 | Ambient and Fluid Temperature | -5~60℃ (未冻结 No freezing) | | | | | |
| 工作压力范围 | Operating Pressure (MPa) | 双动 Double acting | 0.15~0.7 | 0.1~0.7 | | | |
| | | 单动 Single acting | 0.3~0.7 | 0.25~0.7 | | | |
| 最高动作频率 | Max. Operating Frequency | 180 c.p.m. | | | | | |
| 磁性开关 | Auto Switch | D-Z80K | D-A90K | | | | |

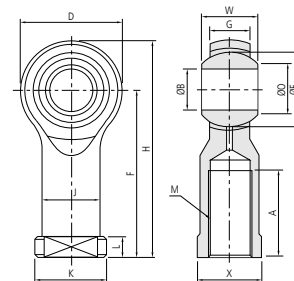
气动辅件 Pneumatic Auxiliaries

鱼眼接头 Female Rod Ends Joint Series PHS



特性:
内螺纹连接
嵌入结构, 具黄油注入口
本体材质为构造用碳钢
衬套材质为铜合金
球体轴套材质为高碳铬轴承钢

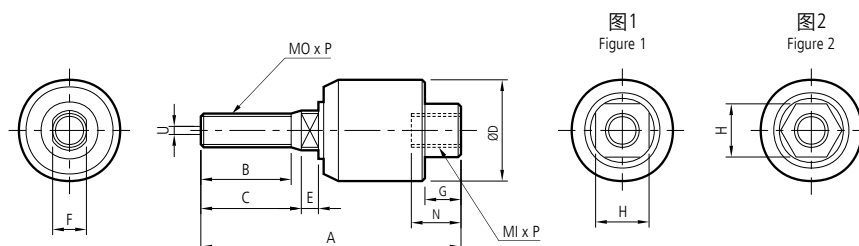
Features:
Female connection
Built-in structure with greasing nozzle
Material of body: carbon steel
Material of bushing: copper alloy
Material of sphere sleeve: high carbon chromium bearing steel



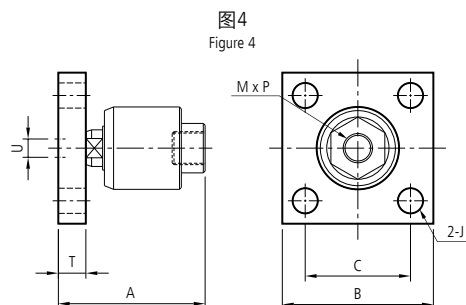
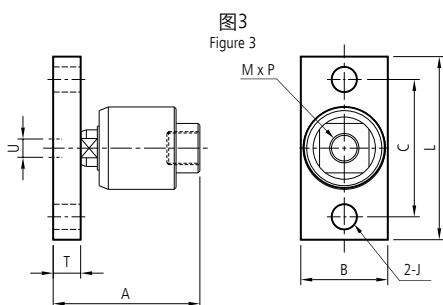
| 型号 Model | A | B | D | E | F | G | H | J | K | L | M | O | W | X |
|-------------------|----|----|----|--------|-----|----|-------|------|----|-----|----------|-------|----|----|
| PHS 5-(M5×0.8) | 14 | 5 | 16 | 11.11 | 27 | 7 | 35 | 9 | 12 | 4 | M5×0.8 | 7.71 | 8 | 9 |
| PHS 6-(M6×1.0) | 14 | 6 | 18 | 12.7 | 30 | 7 | 39 | 10 | 13 | 5 | M6×1.0 | 8.96 | 9 | 11 |
| PHS 8-(M8×1.25) | 17 | 8 | 22 | 15.875 | 36 | 9 | 47 | 12.5 | 16 | 5 | M8×1.25 | 10.4 | 12 | 14 |
| PHS 10-(M10×1.25) | 21 | 10 | 26 | 19.05 | 43 | 11 | 56 | 15 | 19 | 6.5 | M10×1.25 | 12.92 | 14 | 17 |
| PHS 12-(M12×1.25) | 24 | 12 | 30 | 22.225 | 50 | 12 | 65 | 17.5 | 22 | 6.5 | M12×1.25 | 15.43 | 16 | 19 |
| PHS 14-(M14×1.5) | 27 | 14 | 34 | 25.4 | 57 | 14 | 74 | 20 | 25 | 8 | M14×1.5 | 16.86 | 19 | 22 |
| PHS 16-(M16×1.5) | 33 | 16 | 38 | 28.575 | 64 | 15 | 83 | 22 | 27 | 8 | M16×1.5 | 19.39 | 21 | 22 |
| PHS 18-(M18×1.5) | 36 | 18 | 42 | 31.75 | 71 | 17 | 92 | 25 | 31 | 10 | M18×1.5 | 21.89 | 23 | 27 |
| PHS 20-(M20×1.5) | 40 | 20 | 46 | 34.925 | 77 | 18 | 100 | 27.5 | 37 | 10 | M20×1.5 | 24.38 | 25 | 32 |
| PHS 22-(M22×1.5) | 43 | 22 | 50 | 38.1 | 84 | 20 | 109 | 30 | 37 | 12 | M22×1.5 | 25.84 | 28 | 32 |
| PHS 25-(M24×1.5) | 48 | 25 | 56 | 42.862 | 94 | 22 | 122 | 33.5 | 42 | 12 | M24×1.5 | 29.6 | 31 | 36 |
| PHS 30-(M30×2.0) | 56 | 30 | 67 | 50.8 | 110 | 26 | 143.5 | 40 | 50 | 15 | M30×2.0 | 34.81 | 37 | 41 |

气动辅件 Pneumatic Auxiliaries

浮动接头 Floating Joint Series KJAT, KJAF



| 型号 Model | 缸径 Bore | MI x P | MO x P | A | B | C | D | E | F | G | H | N | 容许误差 Allowable Tolerance U | 图号 Figure No. | 摆动角度 Rotation Angle |
|-------------|------------|---------------|---------------|------|----|----|----|----|----|----|----|----|-------------------------------------|---------------------|---------------------------|
| KJA-1004T | 8 | M4×0.7 | M4×0.7 | 24.5 | 8 | 9 | 12 | 2 | 4 | 4 | 8 | 7 | 0.5 | 图1 Figure 1 | ±5° |
| KJA-1005T | 10, 15 | M5×0.8 | M5×0.8 | 38 | 14 | 15 | 18 | 3 | 5 | 5 | 11 | 9 | 0.5 | | |
| KJA-1006T | 15 | M6×1.0 | M6×1.0 | 38 | 14 | 15 | 18 | 3 | 6 | 5 | 11 | 9 | 0.5 | | |
| KJA-1008T | 20 | M8×1.25 | M8×1.25 | 50 | 18 | 20 | 24 | 4 | 8 | 7 | 14 | 12 | 0.5 | | |
| KJA-1010T | 25, 30 | (M10×1.25)1.5 | (M10×1.25)1.5 | 59 | 20 | 22 | 26 | 5 | 10 | 7 | 17 | 14 | 0.75 | | |
| KJA-1014T | 40 | M14×1.5 | M14×1.5 | 70 | 21 | 24 | 35 | 7 | 14 | 8 | 22 | 17 | 1 | 图2 Figure 2 | ±5° |
| KJA-1018T | 50, 63 | M18×1.5 | M18×1.5 | 90 | 26 | 28 | 45 | 9 | 18 | 13 | 28 | 24 | 1.25 | | |
| KJA-1022T | 80 | M22×1.5 | M22×1.5 | 103 | 30 | 32 | 55 | 10 | 22 | 16 | 32 | 27 | 2 | | |
| KJA-1026T | 100 | M26×1.5 | M26×1.5 | 130 | 43 | 45 | 61 | 12 | 26 | 19 | 41 | 33 | 2.5 | | |
| KJA-1036T | 140, 160 | (M36×1.5)2.0 | (M36×1.5)2.0 | 195 | 80 | 82 | 75 | 18 | 36 | 22 | 50 | 41 | 4 | | |



| 型号 Model | 缸径 Bore | M x P | A | B | C | J | L | T | 容许误差 Allowable Tolerance U | 图号 Figure No. | 摆动角度 Rotation Angle |
|-------------|------------|----------|-----|-----|----|----|----|----|-------------------------------------|------------------|---------------------------|
| KJA-1008F | 20 | M8×1.25 | 38 | 25 | 40 | 7 | 52 | 6 | 0.5 | 图3 Figure 3 | ±5° |
| KJA-1010F | 25, 30 | M10×1.25 | 46 | 32 | 44 | 7 | 56 | 9 | 0.75 | | |
| KJA-1014F | 40 | M14×1.5 | 61 | 38 | 60 | 11 | 80 | 12 | 1 | | |
| KJA-1018F | 50, 63 | M18×1.5 | 80 | 74 | 45 | 11 | - | 15 | 1.25 | 图4 Figure 4 | ±5° |
| KJA-1026F | 100 | M26×1.5 | 108 | 100 | 70 | 14 | - | 21 | 2.5 | | |
| KJA-1030F | 125, 140 | M30×1.5 | 117 | 100 | 70 | 14 | - | 21 | 2.5 | | |

气动辅件 Pneumatic Auxiliaries

快速排气阀 Quick Exhaust Valve Series KAQ



| 型号 Model | 接管口径 Port Size Rc(PT) | 有效截面积 Effective Sectional Area (mm ²) | |
|-------------|--------------------------|--|-------------------|
| | | 入-出(In-Out) | 出-排气(Out-Exhaust) |
| KAQ2000-02 | 1/4" | 35 | 40 |
| KAQ3000-03 | 3/8" | 60 | 70 |
| KAQ4000-04 | 1/2" | 105 | 115 |
| KAQ5000-06 | 3/4" | 135 | 180 |
| KAQ5000-10 | 1" | 176 | 187 |

管道限流器 In-line Speed Controller Series KAS



| 型号 Model | 接管口径 Port Size Rc(PT) | 有效截面积 Effective Sectional Area (mm ²) | |
|-------------|--------------------------|--|------------------|
| | | 自由流量Free Flow | 控制流量Control Flow |
| KAS2000-01 | 1/8" | 5.2 | 3.8 |
| KAS2000-02 | 1/4" | 5.2 | 3.8 |
| KAS4000-02 | 1/4" | 25.5 | 25.5 |
| KAS4000-03 | 3/8" | 25.5 | 25.5 |
| KAS4000-04 | 1/2" | 25.5 | 25.5 |
| KAS5000-04 | 1/2" | 106 | 116 |
| KAS5000-06 | 3/4" | 123 | 154 |
| KAS6000-06 | 3/4" | 151 | 164 |
| KAS6000-10 | 1" | 258 | 230 |

磁性开关 Auto Switches



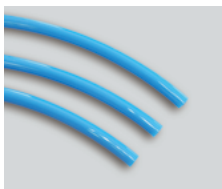
| 型号 | Model | D-A54K | D-A73K | D-A90K | D-C73KL | D-Z73K | D-Z80K | D-Z80VK |
|-------------|-----------------------------------|---------------------------|---------------|---------------|-------------------------------|---------------------------------|---|---|
| | | D-A54KD | D-A73KD | D-A90KD | D-C73KD | D-Z73KD | D-Z80KD | D-Z80VKD |
| | | D-A54KP | D-A73KP | D-A90KP | D-C73KP | D-Z73KP | D-Z80KP | D-Z80VKP |
| | | D-A54KN | D-A73KN | D-A90KN | D-C73KN | D-Z73KN | D-Z80KN | D-Z80VKN |
| 适用气缸 | Applicable Cylinders | KCA1, KMB, KCS1, KC95 | KCQ2 (Ø125) | KCU, KMHC2 | KCJ2, KCM2, KCM2R, KCG1, KC85 | KCP95, KCXS, KMGP, KMHL2, KMHS3 | KCQ2, KMUB, KMSQB, KMXS, KMXQ, KMXH, KMHZ2, KCJ2, KCM2, KCM2R, KC85 | KCQ2, KMUB, KMSQB, KMXS, KMXQ, KMXH, KMHZ2, KCJ2, KCM2, KCM2R, KC85 |
| 开关型式 | Switch Type | 常开型 N.O. | | | | | | |
| 接点型式 | Inducing Switch Type | 有接点/无接点 Reed, solid state | | | | | | |
| *使用电压范围 | Voltage Range | 5~240 V DC/AC | 5~240 V DC/AC | 5~120 V DC/AC | 5~240 V DC/AC | 5~240 V DC/AC | 5~120 V DC/AC | 5~120 V DC/AC |
| 使用温度范围 | Temperature Range | -10~70°C | | | | | | |
| *功率 | Power | ≤10W | | | | | | |
| *压降 | Voltage Drop | ≤3.5 V | ≤3.0 V | ≤2.5 V | ≤3.0 V | ≤3.5 V | ≤2.5 V | ≤2.5 V |
| *感应灵敏度 (高斯) | Induction Delicacy Degree (Gauss) | 60 | 50 | 40 | 30 | 40 | 60 | 40~50 |
| 防护等级 | Enclosure | IP67 | | | | | | |

*注: 使用电压范围, 功率, 压降, 感应灵敏度数据为两线式有接点磁性开关的数据

*Note: The values of voltage range, power, voltage drop and induction delicacy degree are for 2-wire reed switch.

气管 Tubing

聚氨酯PU管 Polyurethane Tubing (PU) KPU



| 型号 | Model | KPU0425 | KPU0604 | KPU0805 | KPU1065 | KPU1208 |
|------------------|---|----------|---------|---------|---------|---------|
| 管外径 | Outside Diameter (mm) | 4 | 6 | 8 | 10 | 12 |
| 管内径 | Inside Diameter (mm) | 2.5 | 4 | 5 | 6.5 | 8 |
| 最小弯曲半径 | Minimum Bending Radius (mm) | 10 | 15 | 20 | 27 | 35 |
| 流体 | Fluid | 空气 Air | | | | |
| 最高使用压力 (20°C) | Maximum Operating Pressure at 20°C (MPa) | 0.9 | | | | |
| 环境及流体温度 | Ambient and Fluid Temperature | -20~60°C | | | | |

难燃性双层聚氨酯 TRBU管 Flame Resistant Double Layer (TRBU) TRBU



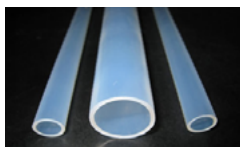
| 型号 | Model | TRBU0604 | TRBU0805 | TRBU1065 | TRBU1280 |
|------------------|---|-------------------------------------|----------|----------|----------|
| 内管外径 | O.D. of Internal Tubing (mm) | 6 | 8 | 10 | 12 |
| 内管内径 | I.D. of Internal Tubing (mm) | 4 | 5 | 6.5 | 8 |
| 外层管厚度 | Thickness of External Layer (mm) | 1 | 1 | 1 | 1 |
| 最小弯曲半径 | Minimum Bending Radius (mm) | 15 | 20 | 27 | 35 |
| 流体 | Fluid | 空气, 水 Air, water | | | |
| 最高使用压力 (20°C) | Maximum Operating Pressure at 20°C (MPa) | 0.8 | | | |
| 环境及流体温度 | Ambient and Fluid Temperature | -20~60°C (空气 Air), 0~40°C (水 Water) | | | |

尼龙管(尼龙12) Nylon Tubing (Nylon 12) KNY12




| 型号 | Model | KNY12 -0425 | KNY12 -0604 | KNY12 -0806 | KNY12 -1008 | KNY12 -1209 | KNY12 -1613 |
|------------------|---|--|----------------|----------------|----------------|----------------|----------------|
| 管外径 | Outside Diameter (mm) | 4 | 6 | 8 | 10 | 12 | 16 |
| 管内径 | Inside Diameter (mm) | 2.5 | 4 | 6 | 8 | 9 | 13 |
| 最小弯曲半径 | Minimum Bending Radius (mm) | 20 | 40 | 50 | 65 | 70 | 130 |
| 流体 | Fluid | 空气, 水 Air, water | | | | | |
| 最高使用压力 (20°C) | Maximum Operating Pressure at 20°C (MPa) | 需参考特性曲线图 Need to refer to the characteristics curve | | | | | |
| 环境及流体温度 | Ambient and Fluid Temperature | -40~100°C | | | | | |


铁氟龙PTFE管 PTFE Tubing PTFE





| 型号 | Model | PTFE -0402 | PTFE -0604 | PTFE -0806 | PTFE -1008 | PTFE -1210 |
|------------------|---|--|---------------|---------------|---------------|---------------|
| 管外径 | Outside Diameter (mm) | 4 | 6 | 8 | 10 | 12 |
| 管内径 | Inside Diameter (mm) | 2 | 4 | 6 | 8 | 10 |
| 最小弯曲半径 | Minimum Bending Radius (mm) | 15 | 35 | 60 | 100 | 130 |
| 流体 | Fluid | 空气, 水, 化学液体等 Air, water, chemical liquid, etc. | | | | |
| 最高使用压力 (20°C) | Maximum Operating Pressure at 20°C (MPa) | 需参考特性曲线图 Need to refer to the characteristics curve | | | | |
| 环境及流体温度 | Ambient and Fluid Temperature | -40~200°C | | | | |


金属快插接头 Metal Push-in Fittings/快拧锁母接头 Rapid Fittings/卡套接头 Pipe Joint Fittings


| Male Stud MPC | Tube(Metric)-Thread(R) | |
|---|------------------------|-----------|
| | Tube(Metric) | Thread(R) |
|  | MPC03-M3 | MPC08-03 |
| | MPC03-M5 | MPC08-04 |
| | MPC04-M5 | MPC10-01 |
| | MPC04-01 | MPC10-02 |
| | MPC04-02 | MPC10-03 |
| | MPC05-M5 | MPC10-04 |
| | MPC05-01 | MPC12-02 |
| | MPC05-02 | MPC12-03 |
| | MPC06-M5 | MPC12-04 |
| | MPC06-01 | MPC14-03 |
| | MPC06-02 | MPC14-04 |
| | MPC08-01 | MPC16-03 |
| | MPC08-02 | MPC16-04 |


| Male Y MPX | Tube(Metric)-Thread(R) | |
|---|------------------------|-----------|
| | Tube(Metric) | Thread(R) |
|  | MPX04-M5 | MPX10-01 |
| | MPX04-01 | MPX10-02 |
| | MPX04-02 | MPX10-03 |
| | MPX05-M5 | MPX10-04 |
| | MPX05-01 | MPX12-01 |
| | MPX05-02 | MPX12-02 |
| | MPX06-M5 | MPX12-03 |
| | MPX06-01 | MPX12-04 |
| | MPX06-02 | MPX14-03 |
| | MPX08-01 | MPX14-04 |
| | MPX08-02 | MPX16-03 |
| | MPX08-03 | MPX16-04 |


| Union Tee MPUT | Tube(Metric) | |
|---|--------------|-----------|
| | Tube(Metric) | Thread(R) |
|  | MPUT03 | |
| | MPUT04 | |
| | MPUT05 | |
| | MPUT06 | |
| | MPUT08 | |
| | MPUT10 | |
| | MPUT12 | |
| | MPUT14 | |
| | MPUT16 | |
| | | |
| | | |
| | | |


| Swivel Male Elbow RPL | Tube(Metric)-Thread(R) | |
|---|------------------------|--------------|
| | Tube(Metric) | Thread(R) |
|  | RPL-5/3-M5 | RPL-10/8-03 |
| | RPL-5/3-M6 | RPL-10/8-04 |
| | RPL-5/3-01 | RPL-12/10-03 |
| | RPL-6/4-M5 | RPL-12/10-04 |
| | RPL-6/4-M6 | |
| | RPL-6/4-01 | |
| | RPL-6/4-02 | |
| | RPL-6/4-03 | |
| | RPL-8/6-01 | |
| | RPL-8/6-02 | |
| | RPL-8/6-03 | |
| | RPL-10/8-01 | |


| Elbow RPUL | Tube(Metric) | |
|---|--------------|-----------|
| | Tube(Metric) | Thread(R) |
|  | RPUL-5/3 | |
| | RPUL-6/4 | |
| | RPUL-8/6 | |
| | RPUL-10/8 | |
| | RPUL-12/10 | |
| | | |


| Banjo (Compact) RCPH | Tube(Metric) | |
|---|--------------|-----------|
| | Tube(Metric) | Thread(R) |
|  | RCPH4/2.5-M5 | |
| | RCPH4/2.5-M6 | |
| | RCPH6/4-M5 | |
| | RCPH6/4-M6 | |
| | | |


| Male Stud Swivel Elbow MPL | Tube(Metric)-Thread(R) | |
|---|------------------------|-----------|
| | Tube(Metric) | Thread(R) |
|  | MPL03-M3 | MPL08-03 |
| | MPL03-M5 | MPL08-04 |
| | MPL04-M5 | MPL10-01 |
| | MPL04-01 | MPL10-02 |
| | MPL04-02 | MPL10-03 |
| | MPL05-M5 | MPL10-04 |
| | MPL05-01 | MPL12-02 |
| | MPL05-02 | MPL12-03 |
| | MPL06-M5 | MPL12-04 |
| | MPL06-01 | MPL14-03 |
| | MPL06-02 | MPL14-04 |
| | MPL08-01 | MPL16-03 |


| Union Straight MPUC | Tube(Metric) | |
|---|--------------|-----------|
| | Tube(Metric) | Thread(R) |
|  | MPUC03 | |
| | MPUC04 | |
| | MPUC05 | |
| | MPUC06 | |
| | MPUC08 | |
| | MPUC10 | |
| | MPUC12 | |
| | MPUC14 | |
| | MPUC16 | |
| | | |
| | | |
| | | |


| Union Y MPY | Tube(Metric) | |
|---|--------------|-----------|
| | Tube(Metric) | Thread(R) |
|  | MPY03 | |
| | MPY04 | |
| | MPY05 | |
| | MPY06 | |
| | MPY08 | |
| | MPY10 | |
| | MPY12 | |
| | MPY14 | |
| | MPY16 | |
| | | |
| | | |
| | | |


| Swivel Male Tee RPT | Tube(Metric)-Thread(R) | |
|---|------------------------|--------------|
| | Tube(Metric) | Thread(R) |
|  | RPT-5/3-M5 | RPT-10/8-03 |
| | RPT-5/3-M6 | RPT-10/8-04 |
| | RPT-5/3-01 | RPT-12/10-03 |
| | RPT-6/4-M5 | RPT-12/10-04 |
| | RPT-6/4-M6 | |
| | RPT-6/4-01 | |
| | RPT-6/4-02 | |
| | RPT-6/4-03 | |
| | RPT-8/6-01 | |
| | RPT-8/6-02 | |
| | RPT-8/6-03 | |
| | RPT-10/8-01 | |


| Tee RPUT | Tube(Metric) | |
|---|--------------|-----------|
| | Tube(Metric) | Thread(R) |
|  | RPUT-5/3 | |
| | RPUT-6/4 | |
| | RPUT-8/6 | |
| | RPUT-10/8 | |
| | RPUT-12/10 | |
| | | |


| Male Straight QPC | Tube(Metric)-Thread(R) | |
|---|------------------------|-----------|
| | Tube(Metric) | Thread(R) |
|  | QPC04-01 | |
| | QPC04-02 | |
| | QPC06-01 | |
| | QPC06-02 | |
| | QPC08-01 | |
| | QPC08-02 | |
| | QPC08-03 | |
| | QPC10-02 | |
| | QPC10-03 | |
| | QPC10-04 | |
| | QPC12-02 | |
| | QPC12-03 | |


| Male Stud Branch Tee MPT | Tube(Metric)-Thread(R) | |
|---|------------------------|-----------|
| | Tube(Metric) | Thread(R) |
|  | MPT04-M5 | MPT10-01 |
| | MPT04-01 | MPT10-02 |
| | MPT04-02 | MPT10-03 |
| | MPT05-M5 | MPT10-04 |
| | MPT05-01 | MPT12-01 |
| | MPT05-02 | MPT12-02 |
| | MPT06-M5 | MPT12-03 |
| | MPT06-01 | MPT12-04 |
| | MPT06-02 | MPT14-03 |
| | MPT08-01 | MPT14-04 |
| | MPT08-02 | MPT16-03 |
| | MPT08-03 | MPT16-04 |

| Union Elbow MPUL | Tube(Metric) | |
|---|--------------|-----------|
| | Tube(Metric) | Thread(R) |
|  | MPUL03 | |
| | MPUL04 | |
| | MPUL05 | |
| | MPUL06 | |
| | MPUL08 | |
| | MPUL10 | |
| | MPUL12 | |
| | MPUL14 | |
| | MPUL16 | |
| | | |
| | | |
| | | |

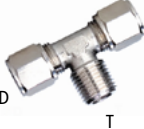

| Male Straight RPC | Tube(Metric)-Thread(R) | |
|---|------------------------|--------------|
| | Tube(Metric) | Thread(R) |
|  | RPC-5/3-M5 | RPC-10/8-03 |
| | RPC-5/3-M6 | RPC-10/8-04 |
| | RPC-5/3-01 | RPC-12/10-03 |
| | RPC-6/4-M5 | RPC-12/10-04 |
| | RPC-6/4-M6 | |
| | RPC-6/4-01 | |
| | RPC-6/4-02 | |
| | RPC-6/4-03 | |
| | RPC-8/6-01 | |
| | RPC-8/6-02 | |
| | RPC-8/6-03 | |
| | RPC-10/8-01 | |

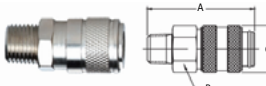
| Union Straight RPUC | Tube(Metric) | |
|---|--------------|-----------|
| | Tube(Metric) | Thread(R) |
|  | RPUC-5/3 | |
| | RPUC-6/4 | |
| | RPUC-8/6 | |
| | RPUC-10/8 | |
| | RPUC-12/10 | |
| | | |

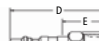

| Male Straight (Compact) RCPC | Tube(Metric) | |
|---|--------------|-----------|
| | Tube(Metric) | Thread(R) |
|  | RCPC4/2.5-M5 | |
| | RCPC4/2.5-M6 | |
| | RCPC6/4-M5 | |
| | RCPC6/4-M6 | |
| | | |
| | | |

| Male Elbow QPL | Tube(Metric)-Thread(R) | |
|---|------------------------|-----------|
| | Tube(Metric) | Thread(R) |
|  | QPL04-01 | |
| | QPL04-02 | |
| | QPL06-01 | |
| | QPL06-02 | |
| | QPL08-01 | |
| | QPL08-02 | |
| | QPL08-03 | |
| | QPL10-02 | |
| | QPL10-03 | |
| | QPL10-04 | |
| | QPL12-02 | |
| | QPL12-03 | |

卡套接头 Pipe Joint Fittings/管道接头 Pipe Fittings/气动单开闭快速接头 Pneumatic Single Shut-off Couplings

| | | | | | |
|---|-------------------------------|--|--------------------------------|---|-------------------------------|
| Male Tee QPT  | Tube(Metric)-Thread(R) | Union Straight QPUC  | Tube(Metric) | Union Elbow QPUL  | Tube(Metric) |
| | QPT04-01 | | QPUC04 | | QPUL04 |
| | QPT04-02 | | QPUC06 | | QPUL06 |
| | QPT06-01 | | QPUC08 | | QPUL08 |
| | QPT06-02 | | QPUC10 | | QPUL10 |
| | QPT08-01 | | QPUC12 | | QPUL12 |
| | QPT08-02 | | | | |
| | QPT08-03 | | | | |
| | QPT10-02 | | | | |
| | QPT10-03 | | | | |
| | QPT10-04 | | | | |
| | QPT12-02 | | | | |
| | QPT12-03 | | | | |
| | QPT12-04 | | | | |
| Union Tee QPUT  | Tube(Metric) | Straight Male PSM  | Thread(R)T1-Thread(R)T2 | Equal Male Stud Elbow PEL  | Thread(R) |
| | QPUT04 | | PSM 01-01 PSM 06-02 | | PEL 01 |
| | QPUT06 | | PSM 02-02 PSM 08-08 | | PEL 02 |
| | QPUT08 | | PSM 02-01 PSM 08-06 | | PEL 03 |
| | QPUT10 | | PSM 03-03 PSM 08-04 | | PEL 04 |
| | QPUT12 | | PSM 03-02 PSM 08-03 | | PEL 06 |
| | | | PSM 03-01 | | PEL 08 |
| | | | PSM 04-04 | | |
| | | | PSM 04-03 | | |
| | | | PSM 04-02 | | |
| | | | PSM 04-01 | | |
| | | | PSM 06-06 | | |
| | | | PSM 06-04 | | |
| | | | PSM 06-03 | | |
| Equal Female Stud Elbow PFL  | Thread(G) | Reduce Male to Female PRMF  | Thread(R)T1-Thread(G)T2 | Plug POH  | Thread(R) |
| | PFL G01 | | PRMF 02-G01 | | POH M5 |
| | PFL G02 | | PRMF 03-G01 | | POH 01 |
| | PFL G03 | | PRMF 03-G02 | | POH 02 |
| | PFL G04 | | PRMF 04-G01 | | POH 03 |
| | PFL G06 | | PRMF 04-G02 | | POH 04 |
| | PFL G08 | | PRMF 04-G03 | | POH 06 |
| | | | PRMF 06-G02 | | POH 08 |
| | | | PRMF 06-G03 | | |
| | | | PRMF 06-G04 | | |
| Male Stud Branch Tee PMT  | Thread(R) | Equal Female Tee PFT  | Thread(R) | Male Barb PHTM  | Tube(Metric)-Thread(R) |
| | PMT 01 | | PFT 01 | | PHTM05-01 PHTM12-03 |
| | PMT 02 | | PFT 02 | | PHTM05-02 PHTM12-04 |
| | PMT 03 | | PFT 03 | | PHTM07-01 PHTM17-03 |
| | PMT 04 | | PFT 04 | | PHTM07-02 PHTM17-04 |
| | PMT 06 | | PFT 06 | | PHTM08-01 PHTM18-03 |
| | PMT 08 | | PFT 08 | | PHTM08-02 PHTM18-04 |
| | | | | | PHTM09-01 |
| | | | | | PHTM09-02 |
| | | | | | PHTM09-03 |
| | | | | | PHTM10-01 |
| | | | | | PHTM10-02 |
| | | | | | PHTM10-03 |
| | | | | | PHTM12-02 |

| Automatic Coupler With 4 Balls Male Pipe Thread ESM | Part No. | Body Size (in.) | Thread Size BSP | Dimensions (in.) Overall Length | Dimensions (in.) Hex Size | Dimensions (in.) Largest Diameter |
|---|----------|-----------------------|-----------------------|--|------------------------------------|--|
|  | ESM1-01 | 1/8 | G 1/8 | A | B | C |
| | ESM1-02 | 1/8 | G 1/4 | 1.37 | 0.55 | 0.70 |
| | ESM2-02 | 1/4 | G 1/4 | 1.45 | 0.66 | 0.70 |
| | ESM2-03 | 1/4 | G 3/8 | 2.55 | 0.81 | 0.98 |
| | | | | 2.58 | 0.81 | 0.98 |

| <div>Nipple Male Pipe EPM</div> <div></div> | Part No. | Body Size (in.) | Thread Size BSP | Dimensions (in.) Overall Length | Dimensions (in.) Exposed Length | Dimensions (in.) Hex Size | Dimensions (in.) Largest Diameter |
|---|----------|-----------------|-----------------|------------------------------------|------------------------------------|------------------------------|--------------------------------------|
| | | | | D | E | F | G |
| | EPM1-01 | 1/8 | G 1/8 | 1.06 | 0.53 | 0.43 | 0.51 |
| | EPM1-02 | 1/8 | G 1/4 | 1.20 | 0.67 | 0.55 | 0.63 |
| | EPM2-01 | 1/4 | G 1/4 | 1.77 | 0.89 | 0.56 | 0.72 |
| | EPM2-02 | 1/4 | G 3/8 | 1.80 | 0.92 | 0.69 | 0.94 |
| | | | | | | | |