

产
品
手
册
P
r
o
d
u
c
t
m
a
n
u
a
l
s

- **涂胶设备**
Product glue
- **充磁设备**
Magnets magnetized
- **工业机器人**
Industrial robot
- **电声自动化**
Electroacoustic automation

久巨—做进口设备的替代者！
Jiuju - do import equipment replacement!



服务热线：400-777-9399

<http://www.jiujuok.com>

深圳市久巨工业设备有限公司
Shenzhen jiuju industrial equipments co. LTD

公司简介 Company profile

深圳市久巨工业设备有限公司（简称：久巨设备），座落在改革开放的前沿城市—深圳，是一家集研发，制造及销售于一体的国家高新技术企业。公司着重技术与创新，拥有一批经验非常丰富的研发及技术工程师，并成立了自己的实验室，配备有现代化的办公及研发基地并取得100多项技术专利。产品主要定位于电子、通讯及五金行业设备的开发及应用，在自动涂胶、磁性材料磁化、工业机器人、电声自动化装配等领域应用非常广泛。产品在实际应用中，获得客户的高度认可，并与世界500强企业进行深度合作如：华为，富士康，三星等。正是因为有这些客户的高标准、严要求，促使我们严格把控产品品质，加强企业自身管理及人才培育，并先后导入ISO9001质量管理体系，荣获中国自主创新品牌，中国重合同，守信任的企业称号。

公司全体人员怀着以实现做进口设备的替代者，成为世界一流的设备制造商为企业愿景。围绕着成就客户，让每一位使用我们产品的客户感到骄傲的企业使命。为客户，员工及合作伙伴创造价值，为企业的永续经营不懈努力的核心价值观。齐心协力，用心耕耘，不忘初心，牢记使命，做好每一个产品，服务好每一位客户，让我们在未来的道路上实现价值，创造共赢。

Shenzhen Jiujie Industrial Equipment Co., LTD. (hereinafter referred to as "jiuju equipment"), located in the frontier city of reform and opening up -- shenzhen, is a national high-tech enterprise integrating r&d, manufacturing and sales. The company focuses on technology and innovation, has a group of experienced r&d and technical engineers, and established its own laboratory, equipped with modern office and r&d base. The products are mainly positioned in the development and application of electronic, communication and hardware industry equipment, and are widely used in the fields of automatic gluing, magnetic material magnetization, industrial robot, electro-acoustic automatic assembly and so on. In practical application, our products have been highly recognized by customers, and we have conducted in-depth cooperation with fortune 500 enterprises, such as huawei, foxconn and samsung. It is precisely because of the high standards and strict requirements of these customers that we strictly control product quality, strengthen enterprise management and talent cultivation, and have introduced ISO9001 quality management system, won the title of China independent innovation brand, China heavy contract, keep the trust of the enterprise and obtained more than 100 technical patents.

All staff of the company cherish the vision of becoming a world-class equipment manufacturer as a substitute for imported equipment. Around the achievement of customers, let every customer use our products proud of the mission of the enterprise. The core values of creating value for customers, employees and partners, and making unremitting efforts for the sustainable management of the enterprise. Make concerted efforts, work hard, never forget the original intention, remember the mission, do a good job in every product, serve every customer, let us in the future road to achieve value, create a win-win situation.

做进口设备的替代者 Substitute for imported equipment



厂房
workshop



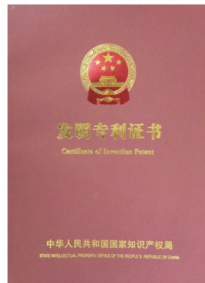
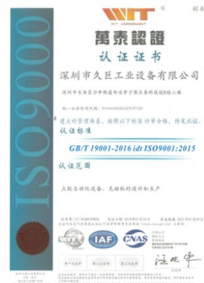
前台
Front desk



研发
Research and development



车间
workshop



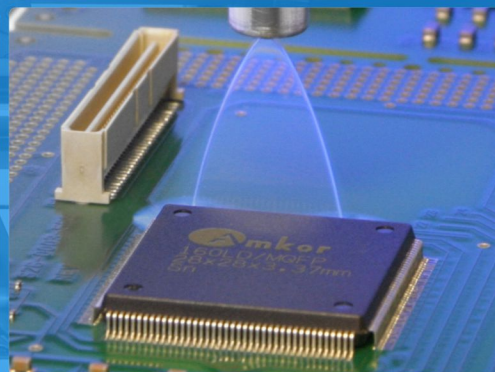
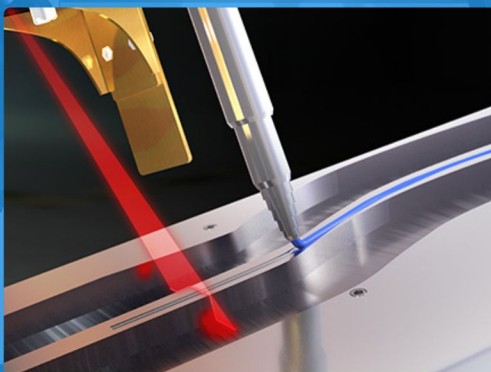
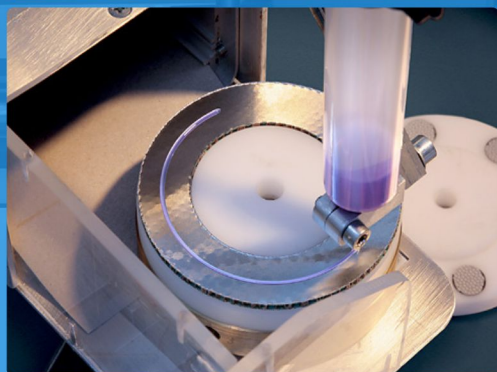


涂胶设备

Coating equipment

应用于各种流体喷、涂、点、灌的控制

It is applied to the control of spray, coating, spot and irrigation of various fluids



—做进口设备的替代者—

—Be a substitute for imported equipment—

全国服务热线：400-777-9399

Nationwide service hotline: 400-777-9399



手持式双液树脂灌胶机

Hand-held double liquid resin pouring machine

产品概述：

Product description

齿轮泵（螺杆泵）灌胶系统是使用不同泵体的一种控胶设备，齿轮泵的概念是很简单的，即它的最基本形式就是两个尺寸相同的齿轮在一个紧密配合的壳体内相互啮合旋转，这个壳体的内部类似“8”字形，两个齿轮装在里面，齿轮的外径及两侧与壳体紧密配合。来自于挤出机的物料在吸入口进入两个齿轮中间，并充满这一空间，随着齿的旋转沿壳体运动，最后在两齿啮合时排出。

Glue wheel pump, screw pump) system is the use of different rubber pump body of a kind of control device, the concept of gear pump is very simple, that it is the most basic form of two of the same size gear in a close coordination of casing gears rotate, the shell's internal similar "8" glyph, two gear is installed inside, outside diameter of the gear on both sides and work closely with shell. The material from the extruder enters between the two gears at the suction inlet, fills the space, moves along the shell with the rotation of the teeth, and finally is discharged when the teeth engage.

产品应用：

Applications

双组份（AB）胶水、硅胶、环氧树脂、PU聚氨酯胶水
All kinds of hot melt strip, granule, plastic, solvent, adhesive, pigment, chemical material, solid adhesive, etc.

行业应用：

Industry application

电容，电源，变压器，高压包，点火线圈，安定器，电感线圈，线路板等。

Packaging, clothing, mobile phones, electro-acoustic devices, electromagnetic inductors, optics, LED lighting, communication, electronic appliances, hardware machinery, etc

产品参数

Product parameters

产品名称 Product name	手持式双液树脂灌胶机 Hot melt dispensing quantity controller
型号/规格 Model/specification	DR-6L
产品编号 Official guidance price	650450
机械臂参数 Arm parameters	行程：X 800*Y 800*Z 150mm.采用龙门结构设计，精密导轨加同步齿轮配精密步进电机控制，手持式编程示教控制器。具有数据保存，MAK校正，远程控制等功能 Trip: X 800*Y 800*Z 150mm. Adopt gantry structure design, precision guide rail and synchronous gear with precision stepper motor control, handheld programming teaching controller. With data saving, MAK correction, remote control and other functions
配比比例 The ratio of the proportion	100：100---100：10 可依要求设定 100:100---100:10 can be set according to requirements
重复精度 Repeat accuracy	出胶精度：±2%。AB比例精度：±2% Gelatinization accuracy: ±2%. Accuracy of AB ratio: ±2%
出胶流量 The plastic flow	移动流量：500mm/S 出胶量:1-20ml/S Mobile flow: 500mm/S glue output :1-20ml/S
胶水粘度 Glue viscosity	500CPS—30000CPS (可通过加热及搅拌降低粘度) 500CPS -- 30000CPS (can reduce viscosity by heating and stirring)
送胶方式 Send glue way	精密螺杆泵（可有颗粒参合物），齿轮泵（不可有参合物），采用步进电机传送 Precision screw pump (can have particle ginseng compound), gear pump (can't have ginseng compound), using stepper motor transmission
混合方式 Mixed way	静态混合（先配混合节数），动态混合（采用电机控制混合管旋转搅拌）。 Static mixing (mixing section number first), dynamic mixing (motor control mixing tube rotation mixing).
控制方式 The control mode	采用PLC控制器，触摸屏液晶文本组合控制。进口脉冲信号驱动控制器控制流量 PLC controller, touch LCD text combination control. The inlet pulse signal drives the controller to control the flow
配件说明 Accessories show	储料搅拌系统（采用不锈钢材质,带加热）。送料系统（采用电机驱动泵辅，精确控制泵辅的旋转速度及角度，实现送料及配比控制）。出胶混合系统（采用双液带搅拌出胶阀精确控制，并带自动清洗功能） Material storage and stirring system (made of stainless steel with heating). Feeding system (motor drive pump auxiliary, precise control of pump auxiliary rotation speed and Angle, to achieve feeding and proportioning control). Glue discharging and mixing system (with double liquid belt glue discharging valve for precise control and automatic cleaning function)
功能说明 Functional specifications	手动与自动控制方式。精确设定出胶比例，出胶流量，加热温度，防固化滴胶，缺料报警等 Manual and automatic control mode. Accurately set the glue ratio, glue flow rate, heating temperature, anti-curing glue drop, material shortage alarm, etc
外形尺寸/重量 Overall dimension/weight	D80*W90*H150mm，重量：80kg D80*W90*H150mm, weight: 80kg
料筒选配(不锈钢) Optional material cylinder (stainless steel)	20L, 30L, 40L, 50L
工作参数 Working parameters	电压：220V 50HZ, 功率：2KW, 工作气压：0.5-0.7kg 噪音：65db Voltage: 220V 50HZ, power: 2KW, working pressure: 0.5-0.7kg noise: 65db



各种溶剂
arc point glue



粘胶剂
arc point glue



油漆
arc point glue



润滑脂
arc point glue



环氧树脂
arc point glue



颜料
arc point glue



 **400-777-9399**

深圳总部

地址：深圳市宝安区沙井街道后亭社区巨基科技工业园B栋
☎ 0755-29351099 ☎ 0755-29351799 ☐ 13428976919
✉ email@szjiuju.com 🌐 www.jiujujuk.com 📠 38195027

苏州分公司

地址：江苏省苏州市高新区华山路105号

☎ 400-777-9399

☐ 13823714281

青岛分公司

地址：山东省青岛市红岛经济开发区 出口加工区

☎ 400-777-9399

☐ 18002556337

中山分公司

地址：中山市三角镇金煌路7号

☎ 400-777-9399

☐ 13827468182

香港分公司

地址：香港中环德辅道中161-167号香港贸易中心3楼301-7

☎ 400-777-9399

☐ 13826563476

厦门分公司

地址：厦门市同安工业集中区思明园100号

☎ 400-777-9399

☐ 13823541479

广州分公司

地址：广州市大学城青蓝街10号国家数字研究基地A601

☎ 400-777-9399

☐ 18823789061