

产
品
手
册
P
r
o
d
u
c
t
m
a
n
u
a
l
s

- **涂胶设备**
Product glue
- **充磁设备**
Magnets magnetized
- **工业机器人**
Industrial robot
- **电声自动化**
Electroacoustic automation

久巨—做进口设备的替代者！
Jiuju - do import equipment replacement!



服务热线：400-777-9399

<http://www.jiujuok.com>

深圳市久巨工业设备有限公司
Shenzhen jiuju industrial equipments co. LTD

公司简介 Company profile

深圳市久巨工业设备有限公司（简称：久巨设备），座落在改革开放的前沿城市—深圳，是一家集研发，制造及销售于一体的国家高新技术企业。公司着重技术与创新，拥有一批经验非常丰富的研发及技术工程师，并成立了自己的实验室，配备有现代化的办公及研发基地并取得100多项技术专利。产品主要定位于电子、通讯及五金行业设备的开发及应用，在自动涂胶、磁性材料磁化、工业机器人、电声自动化装配等领域应用非常广泛。产品在实际应用中，获得客户的高度认可，并与世界500强企业进行深度合作如：华为，富士康，三星等。正是因为有这些客户的高标准、严要求，促使我们严格把控产品品质，加强企业自身管理及人才培育，并先后导入ISO9001质量管理体系，荣获中国自主创新品牌，中国重合同，守信任的企业称号。

公司全体人员怀着以实现做进口设备的替代者，成为世界一流的设备制造商为企业愿景。围绕着成就客户，让每一位使用我们产品的客户感到骄傲的企业使命。为客户，员工及合作伙伴创造价值，为企业的永续经营不懈努力的核心价值观。齐心协力，用心耕耘，不忘初心，牢记使命，做好每一个产品，服务好每一位客户，让我们在未来的道路上实现价值，创造共赢。

Shenzhen Jiujue Industrial Equipment Co., LTD. (hereinafter referred to as "jiujue equipment"), located in the frontier city of reform and opening up -- shenzhen, is a national high-tech enterprise integrating r&d, manufacturing and sales. The company focuses on technology and innovation, has a group of experienced r&d and technical engineers, and established its own laboratory, equipped with modern office and r&d base. The products are mainly positioned in the development and application of electronic, communication and hardware industry equipment, and are widely used in the fields of automatic gluing, magnetic material magnetization, industrial robot, electro-acoustic automatic assembly and so on. In practical application, our products have been highly recognized by customers, and we have conducted in-depth cooperation with fortune 500 enterprises, such as huawei, foxconn and samsung. It is precisely because of the high standards and strict requirements of these customers that we strictly control product quality, strengthen enterprise management and talent cultivation, and have introduced ISO9001 quality management system, won the title of China independent innovation brand, China heavy contract, keep the trust of the enterprise and obtained more than 100 technical patents.

All staff of the company cherish the vision of becoming a world-class equipment manufacturer as a substitute for imported equipment. Around the achievement of customers, let every customer use our products proud of the mission of the enterprise. The core values of creating value for customers, employees and partners, and making unremitting efforts for the sustainable management of the enterprise. Make concerted efforts, work hard, never forget the original intention, remember the mission, do a good job in every product, serve every customer, let us in the future road to achieve value, create a win-win situation.

做进口设备的替代者 Substitute for imported equipment



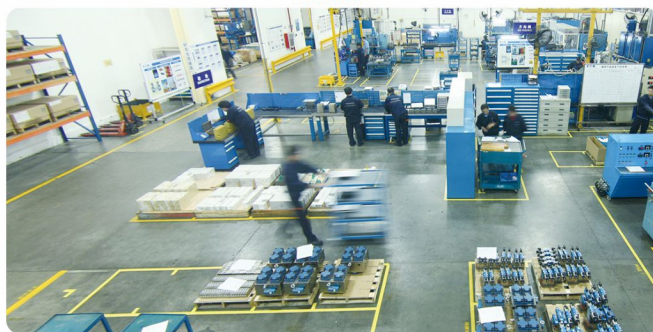
厂房
workshop



前台
Front desk



研发
Research and development



车间
workshop



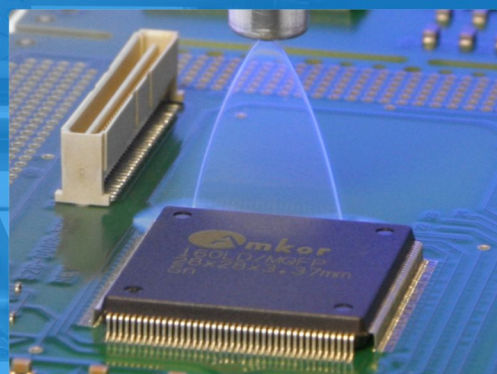
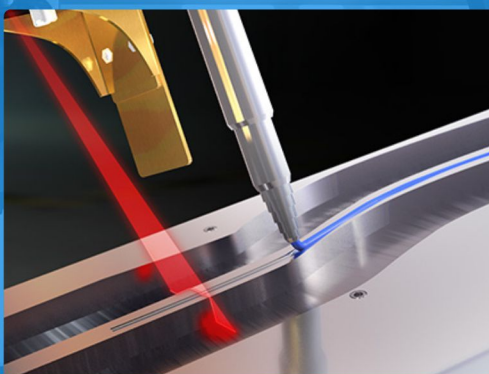


涂胶设备

Coating equipment

应用于各种流体喷、涂、点、灌的控制

It is applied to the control of spray, coating, spot and irrigation of various fluids



—做进口设备的替代者—

—Be a substitute for imported equipment—

全国服务热线：400-777-9399

Nationwide service hotline: 400-777-9399

JIUJUOK®

线路板自动点胶（涂覆）机
Automatic gluing (coating) machine for circuit board

MAK点定位识别功能，全程实现无人操作，真正实现多角度，高精度，无污染操作简单，调试方便等
MAK point positioning and identification function, the whole process to achieve unmanned operation, truly achieve multiple angles, high precision, pollution-free operation simple, convenient debugging, etc.



线路板自动点胶（涂覆）机
Automatic gluing (coating) machine for circuit board

产品概述：
Product description

涂覆机，是专门对流体进行控制并将流体涂覆于产品表面的自动化机械设备。主要用于产品工艺中的三防漆，UV胶以及其他液体精确喷、涂、点滴到每个产品精确位置，可以用来实现画线、圆型或弧型。表面涂覆机技术就是在产品的表面涂覆一种新材料的技术，产品表面喷涂的作用主要表现在能够起到一个防水，防尘，防静电等。将新材料喷涂到产品表面之后，涂覆层的化学成分、组织结构可以喝基质材料完全不同，它以满足表面性能、涂覆层与基质材料的结合强度能适应工况要求、经济性好、环保性好为准则。表面涂覆的喷涂厚度为几微米，甚至更少。
The coating machine is an automatic mechanical equipment specially for controlling the fluid and coating the fluid on the surface of products. It is mainly used for three anti-paint, UV glue and other liquid to spray, paint and drop to the precise position of each product. It can be used to draw line, circle or arc. Surface coating machine technology is the product of surface coating of a kind of new material technology, product surface spraying effect mainly displays in the layer of chemical composition, the structure of the organization can drink matrix material is completely different, it is to meet the performance, surface coating layer and substrate material of bonding strength can meet the requirements for working conditions and good economical and environmental protection as the criterion. The surface coating is several microns or less thick.

产品应用：
Applications

涂覆机适合PCB集成线路板、汽车电子控制板、电子线路板、航空仪表板、软性印刷线路板、微电脑控制板、半导体晶体线路保护、家电控制器、LED等行业涂覆工艺
The coating machine is suitable for PCB integrated circuit board, automobile electronic control board, electronic circuit board, aviation dashboard, flexible printed circuit board, microcomputer control board, semiconductor crystal circuit protection, home appliance controller, LED and other industries

行业应用：
Industry application

LED行业、驱动电源行业、通讯行业、电脑主板、自动化行业、电子、电焊机行业、汽车电子行业、智能电表行业
Packaging, clothing, mobile phones, electro-acoustic devices, electromagnetic inductors, optics, LED lighting, communication, electronic appliances, hardware machinery, etc.

产品参数
Product parameters

产品名称 Product name	线路板自动点胶（涂覆）机 Automatic gluing (coating) machine for circuit board
型号/规格 Model/specification	N460(N460B)
产品编号 Official guidance price	175120
类型/轴数 Type/number of axes	在线式/三轴X/Y/Z(四轴X/Y/Z/U) On line/three-axis X/Y/Z(four-axis X/Y/Z/U)
U轴旋转角度/U轴驱动 U axis rotation Angle /U axis drive	无 (±180°) /无 (伺服马达) No (±180°)/no (servo motor)
典型应用 Typical applications	PCB板旋转性喷涂，IC/电容引脚等 (PCB板90°选择性喷涂，90°IC/电容引脚等) PCB board rotating spraying, IC/ capacitor pin, etc. (PCB board 90° selective spraying, 90°IC/ capacitor pin, etc.)
计算机/软件 Computer/software	工控机+运动控制卡，液晶显示器，键盘/Windows7，信诺Coating Industrial PC + motion control card, liquid crystal display, keyboard /Windows7, cigna Coating
编程方式/驱动 Programming mode/driver	鼠键套/伺服马达+滚珠丝杆 Mouse key sleeve/servo motor + ball screw
可倾斜角度 Obliquable Angle	胶阀不可倾斜 (可选胶阀倾斜35°) 倾斜角度采用直线气缸 (可选) Non-tilt rubber valve (optional rubber valve tilt 35°)
定位精度/重复精度 Positioning accuracy/repeat accuracy	±0.02mm
最大移动速度/最大加速度 Maximum moving speed/maximum acceleration	1000m/S (X,Y,Z) / 1g (X,Y)
运输驱动/调宽系统 Transport drive/widening system	步进电机，不锈钢链条/手动 (可选自动) Stepper motor, stainless steel chain/manual (auto optional)
调幅速度/运输速度 Amplitude modulation speed/transport speed	250mm/min / 0-2400mm/min
传送方向/最大基板厚度 Transfer direction/maximum substrate thickness	L→R (R-L可选) / 8MM L→R (r-l optional) / 8MM
轨道承重 (含夹具) /轨道数量 Track load (including fixtures)/track quantity	5.8KG/1条 (可选配2条) 5.8kg / 1 (2 pieces are optional)
点胶区域 (W*L) /元件最大高度 Dispensing area (W*L) / maximum height of element	460X460mm/输送面上100mm下100mm 460X460mm/ 100mm below 100mm on conveying surface
胶阀数量/胶阀类型 Number of rubber valve/type of rubber valve	2 / 针式胶阀、锥形喷胶阀、扇形阀、薄膜喷胶阀 (可选配) 2 / needle glue valve, conical glue spraying valve, sector valve, film glue spraying valve (optional)
单次涂覆宽度/涂料容量 Single coating width/coating capacity	2-30mm (根据所选阀而异) / 10L 2-30mm (depending on selected valve) / 10L
抽风方式/排风要求 Exhaust mode/exhaust requirements	后孔制抽风 / 15m³/min Rear hole pumping / 15m cubed /min
通讯接口/气压 Communication interface/air pressure	SMEMA接口 / 企业0.4-0.6Mpa SMEMA interface/enterprise 0.4-0.6mpa
功率/总功率 Power/total power	电压AC220V,50/60HZ,10A / 2.6KW Voltage AC220V, 50/60hz, 10A / 2.6kw
总重量 The total weight	780KG
外形尺寸 (L*W*H) Overall dimension (L*W*H)	1100x1110x1800mm
选培项 Selective item	1：条码扫描；2：低胶量报警装置；3：视觉定位；4：UPS； 1: barcode scanning; 2: low glue volume alarm device; 3. Visual positioning; 4: UPS;



 **400-777-9399**

深圳总部

地址：深圳市宝安区沙井街道后亭社区巨基科技工业园B栋
☎ 0755-29351099 ☎ 0755-29351799 ☎ 13428976919
✉ email@szjiuju.com 🌐 www.jiujujuk.com 📠 38195027

苏州分公司

地址：江苏省苏州市高新区华山路105号

☎ 400-777-9399

☎ 13823714281

青岛分公司

地址：山东省青岛市红岛经济开发区 出口加工区

☎ 400-777-9399

☎ 18002556337

中山分公司

地址：中山市三角镇金煌路7号

☎ 400-777-9399

☎ 13827468182

香港分公司

地址：香港中环德辅道中161-167号香港贸易中心3楼301-7

☎ 400-777-9399

☎ 13826563476

厦门分公司

地址：厦门市同安工业集中区思明园100号

☎ 400-777-9399

☎ 13823541479

广州分公司

地址：广州市大学城青蓝街10号国家数字研究基地A601

☎ 400-777-9399

☎ 18823789061