



User Manual

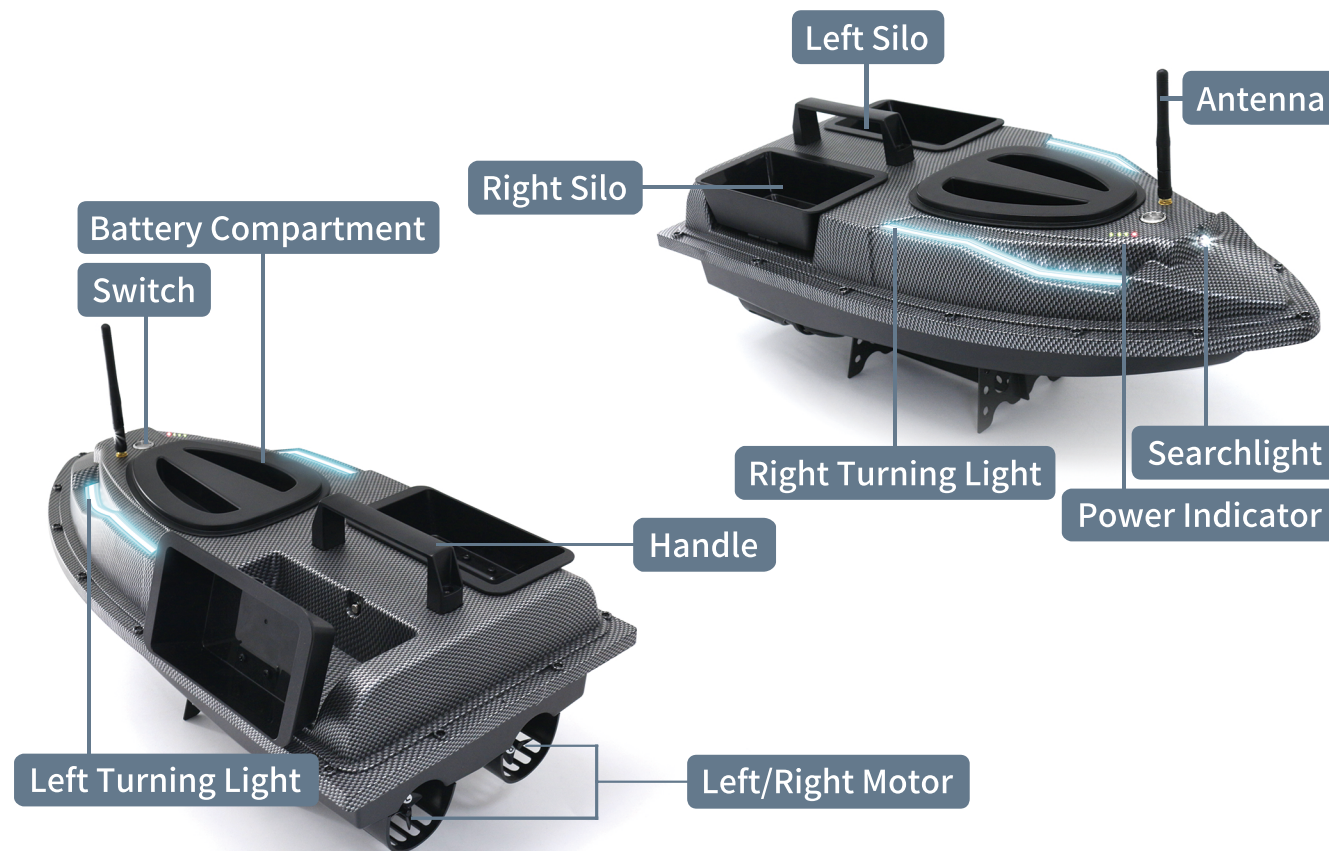


INTELLIGENT REMOTE CONTROL
BAIT BOAT

智能遥控打窝船

Description Of The Bait Boat.....	15
Remote Control Button Description.....	16
Boat Operating Direction Description.....	17
Remote Control Display Description.....	18
Notice Before Use.....	19
Preparation Before Use.....	19
GPS Positioning Operation Instructions.....	20
Other Functions Of The Remote Control.....	21
Important Safety Instructions.....	22
Safety Warning.....	24
Battery Usage And Charging Instructions.....	25
Maintenance.....	26
The Solutions To The Malfunctions Of The Fishing Boat.....	27

Description Of The Bait Boat





REMOTE CONTROL BUTTON DESCRIPTION

Boat Operating Direction Description

Left and right turning light : When turning, the corresponding turn ing light will flash alternately red and white.

① Push both directional sticks up at the same time, and the boat forward.



② Push both directional sticks down at the same time, and the boat go backward.



③ Push the left directional stick down and the right directional stick up, the boat turn left.

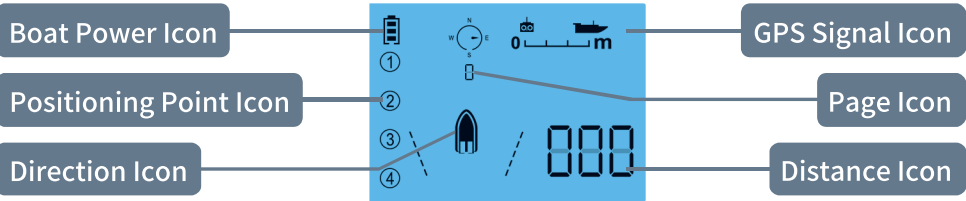


④ Push the left directional stick up and the right directional stick down, the boat turn right.



Note: The left and right operation of the remote control has no function

Remote Control Display Description



Boat Power Icon: The battery icon represents the power of the battery on the boat. When the battery icon is full, it means that the power of the boat is sufficient. Generally, 2 bars of power are displayed when running with bait loading. When the battery icon remains 1 bar, it means that the boat is in low battery capacity, and the battery needs to be replaced or charged in time.

Note: The battery display is only accurate when running

GPS Signal Icon: The  icon on the screen is the GPS signal icon. When this icon appears, calibration and positioning point storage settings can be performed.

Distance icon: The distance icon in the lower right corner of the screen shows the distance between the boat and the origin position point or the distance between two positioning points in the fixed-point cruise function.

Direction Icon: The boat icon on the remote control represents the direction of the boat sailing. When the boat is sailing, if the boat icon is in the middle, it means the boat is not yaw. If the boat icon is on the left, it means the boat is turning left. If the boat icon is on the right, it means the boat is turning right.

Note: In the Positioning point cruise and fixed-speed cruise state, the direction icon will be displayed back and forth, indicating that the boat gyroscope is calibrating and keeping straight.

Page Icon: The number under the compass on the remote control screen represents the page icon. The screen has total ten pages, the default number displayed on the first page is 0, the number displayed on the second page is 1, and so on. The number displayed on the tenth page is 9, which is the last page. You can turn the page by pressing the left page button and the right page button on the remote control.

Positioning Point Icon: The ①②③④ icons on the screen are the boat positioning point icon, corresponding to the positioning point button on the left side of the screen. After pressing the position point button, the corresponding number icon will appear on the screen. If you press the positioning point 1 button, the icon of ① will appear on the screen, which means that the boat is stored as a positioning point at this position. If the current page is full of setting points, press the right page button to next page to set fifth point, and so on.



Notice Before Use


1. Read the complete manual and safety instructions before use;
2. Take out the bait boat from the package;
3. Tear off the protective film at the bottom;
4. Install the antenna on the boat;
5. Fully charge the battery by using the charger. When the chargerr's LED indicator changes from red to green, the battery is fully charged;
6. Open the battery compartment cover of the boat, connect the fully charged battery to the boat, and close the battery compartment cover;
7. Press the bait boat switch;
8. Turn on the remote control switch;
9. The bait boat is ready.

Preparation Before Use

One: start-up preparation

1. Place the boat on the flat ground, first press the switch of the boat, and then turn on the switch of the remote control. When the remote control makes a "beep" sound, the green indicator light of the remote control show on, and the turning light of the boat is showing white light on. Which indicate that the remote and the boat are connected.
2. When the frequency matching between the remote control and the boat is completed, push the operating rob of the remote control to check whether the boat motors on both sides are normal. If they rotate normally, they can be put into the water for operation

Two: Calibration


1. When the icon of  is displayed on the remote control screen, use the remote control to drive the boat around 7 meters out from the shore to ensure that there are no obstacles in the surrounding.

Note: The GPS signal search time depends on the surrounding environment, generally within two minutes.

2. Press the OK button without release + the calibration button(Figure1), the boat enters the automatic calibration state, the boat automatically rotates in the water, and the boat stops rotating when the calibration is completed.

Note: When encountering an obstacle, press the calibration key to exit the calibration. If the water waves are large, it will affect the calibration of the boat. Calibration should be performed when the water is calm.

Three:set the origin point

When the GPS icon shows , the positioning point storage can be operated. When the boat calibration is completed, the remote control screen is displayed as page 0. It is recommended that the boat stop near the shore as the starting point, press the "OK button" on the remote control without release and then press the positioning point ① button(Figure2), the icon of point ① on the remote control screen first flashes and then show on, and the point ① at this time is stored as the origin. After the origin position point setting is completed, you can set and store other positioning points in this way.

Note: After setting the origin, the distance displayed on the remote control screen is the distance from the origin after the boat drive away.

GPS Positioning Operation Instructions

GPS Positioning Point Storage: After the origin position point is successfully set, when you can drive the boat to the specified point, press the OK key without release + press the corresponding position point button to store the position. After current position point is successfully set, the corresponding number on the display first flashes and then shows on. The boat can drive to the next place, and the new position points can be set in the order of the pages. Up to 40 positioning points can be stored [a total of ten interfaces, each interface can be set with 4 positioning points, each interface positioning point is full, you can turn the page to set a new positioning point(Figure3)].

NOTE: Stored position points are cleared when the boat is powered off.



Figure1



Figure2



Figure3

Positioning Point Cruise: When the positioning point is set, select the positioning point to be reached, press the positioning point button(Figure4) and the boat will start to cruise automatically. At this time, the distance displayed on the screen is the distance between the two positioning points. When the displayed distance is shortened until it is displayed as 0m, the remote control will make **two sounds of "di, di"**, which means that the boat reaches the selected positioning point and stops driving.

Note: 1. After the boat reaches the setting positioning point, the distance display on the remote control screen will return to show the distance between the origin position point and the boat current position

2. When the boat deviates or runs in the wrong position, please re-calibrate.

3. If the boat wants to cancel the operation during the cruise, long press the corresponding positioning point to cancel the cruise function.

One Button Return: Press the one button return button(Figure5), and the boat will drive back to the origin position point (the origin position point needs to be set before this function can be realized).

If you want to cancel the one button return function, press the one- button return button again to cancel the action of returning.

One Button Delete: Long press the one button delete button(Figure6) to clear all the stored positioning points on the remote control.

Other Functions Of The Remote Control

Light Switching: Press the light button on the remote control(Figure7), the front searchlight starts to flash, press the light button again, the front searchlight is stay on, and the searchlight is turned off when you press it for the third time.

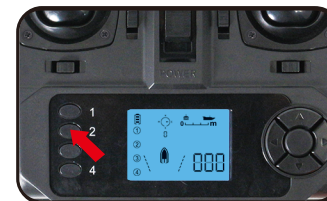


Figure4



Figure5



Figure6



Figure7

Fixed- Speed Cruise: When the boat is driving forward, long press the Fixed-speed cruise button(Figure8) at the same time, the boat will enter the cruise mode and drive in constant speed. At this time, no remote control operation is required, and the boat will keep moving forward. To cancel the fixed-speed cruise mode, just short press the fixed-speed cruise control button to cancel.

Note: In the low power state, the boat cannot enter the cruise control mode

Baiting Button: Press the left baiting button to pop up the left silo, and press the right baiting button to pop up the right silo(Figure9).

Note: After the silo pops up, you need to press the silo back to the position by hand

Electronic Fence: When battery fully charged, the boat can drive to 500m distance far. However, when the boat is in a low power state, the remote control will issue a prompt sound, and the boat cannot sail beyond the range of 150 meters to avoid the situation that the boat cannot return in a low power state. When the boat is in a low battery state, the battery icon on the remote control has only one battery left, and the boat will automatically return to the origin.

Return After Loss of Signal: When the battery of the remote control is low/automatic shutdown/turn off the remote control, the boat will automatically return to the origin position point.

Low Battery Reminder Of Remote Control: when the remote control is in low battery situation, the remote control emits a long beep of "dee" sound.

Important Safety Instructions

The following safety instructions should always be followed when using this product to avoid the risk of fire, electric shock or property/personal injury.



图8

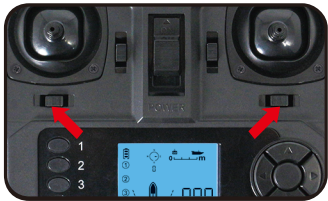


图9

SAFETY WARNING

01. Be sure to read the complete manual and safety instructions before using;
02. This product contains sensitive electronic components and parts, so please use this product carefully;
03. Do not place this product in direct sunlight or in a dark and humid environment;
04. Do not use this product in thunderstorm/lightning, rainy weather;
05. Do not make this product turn when it casting the line. This prevents the fishing line from wrapping around the motor/propeller;
06. Do not pass the boat over aquatic plants or other obstacles to avoid the motor being entangled;
07. It is recommended to maintain this product after each use, by opening the battery compartment cover of the boat, taking out the battery, and opening the battery compartment to dry the internal water droplets.
08. Always keep this product dry and clean;
09. Do not clean the product when it is powered on, and do not turn on the power when the product is still wet;
10. When using, it is recommended to tie the neckband to the remote control so that it can be hung around the neck;
11. The remote control can only use approved AA batteries (1.5V);
12. Do not fully discharge the battery;
13. When using this product, please fully charge the battery before using it;
14. Please use the provided charger to charge the battery;
15. Do not power on this product and the battery for a long time;
16. If there are only three (or less than three) LEDs on the four LEDs of the boat's power indicator, please replace the battery with a new one immediately or take it out for charging;
17. When you are not using this product, please remove the battery from the boat hull;
18. Do not leave any cables that may be accidentally tripped or pulled;
19. Do not use this product in a high temperature environment;
20. Do not drop or damage the product;
21. Before charging, please check whether the charger is damaged, if there is damage, please contact the supplier;
22. Please use official parts for replacement;
23. If the product fails or stops working, please stop using it and contact the supplier;
24. Keep packing materials and small accessories out of the reach of children.

Precautions

What is the playing time of this boat?
Each battery can sail for 2 hours. Weather affects the working time of each battery. Weather conditions, such as high winds, can affect battery power, causing the boat to consume more power.

How far is the range?
The distance between the remote control and the boat is up to 500 meters. However, environmental factors have a large impact on the distance, so we do not recommend using a boat to sail this distance.

The remote can't control the boat?
Turn off the power of the remote control and the boat, you need to re-pair the frequency of the remote control and the boat. Place the boat on the flat ground, first press the pairing button on remote control without loosening it, then press the switch on the boat, then turn on the switch on remote control (Figure10), when the remote control makes a "beep" sound, the green indicator light on the turning light on the boat is showing white light, which indicating that the remote control and the boat have been connected.

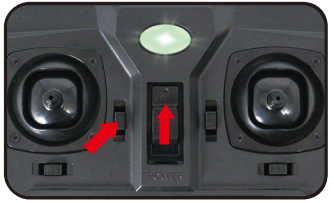
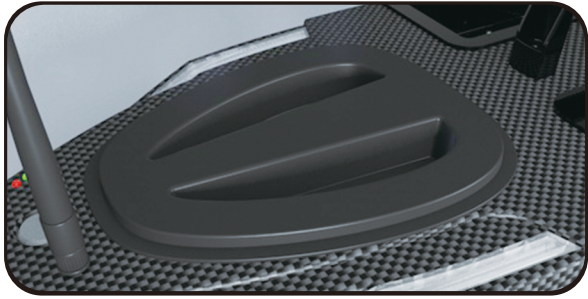


Figure10

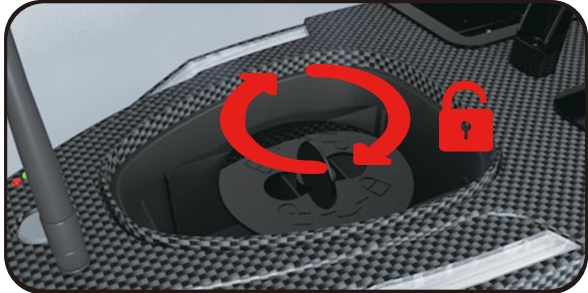
Battery Usage And Charging Instructions



Boat Battery
Built-in one set battery



Connect The Battery
Connect the battery compartment interface when using



Take Out The Battery And Install
Turn clockwise to open and remove the battery, press the holder into place and turn counterclockwise to secure



Battery Charging Interface
Connect the battery to the charger
Red light: Charging
Green light: Complete

Maintenance

Remote Control

Please remove the battery when not in use for a long time.

Boat Hull

- 1.After use, please wipe the water to keep the boat hull dry and clean.
- 2、When the battery is not used for a long time,please takeit out and charge it for storage.
- 3、Do not get close to high temperature objects.
- 4、When not in use, please store the boat to prevent dust.

What Should I Do If The Charging Fails:

- 1. First check whether the charger is it working normally(Figure11)
- 2. Whether the charger is connected to the charging port in place, and the contact at the interface is it normal or not (Figure12)



Figure11

Motor

Check the motor for entangled debris after using.

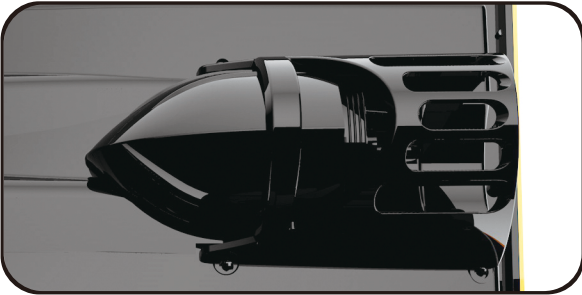


Figure12

The Solutions To The Malfunctions Of The Fishing Boat

Malfunctions		Solutions
01	Can not switch	1.Check whether the battery connection of the boat and the remote controller is correct. 2.Check whether the switch of the remote controller of the boat is turned on. 3.Recharge or replace the battery.
02	Short remoting distance	1.Check whether the boat antenna is twisted in place. 2.Replace new battery of the boat 3.Replace the antenna.
03	Unilateral propeller does not turn	It is the normal that one of the motors does not turn when the boat on the land, because the gyroscope of the boat does not calibration on the land and it must work on the water surface
04	The boat runs yaw	1.Check whether the propeller is entanaled by the sundries 2.Put the boat on the land which must be flat and then re-match the remote controller and the boat
05	The boat and remote controller can be switched but not be controlled	Re-match the remote controller and the boat
06	Control the boat automatically function after switching the boat	1.Check whether the buttons of the remote controller are stuck 2.If the buttons of the remote controller are not stuckmost ofthe remote controller are with waterso the remotecontroller should be replaced.
07	GPS boat without the positioning	1.Firstly. the boat will be with the positioninginformation under the open outdoors there is nosatellite positioning in the house. 2.It is about 2 Mins from the switching boat to the displaying time for the GPS positioning time ,GPS search signal need about 2 Mins.

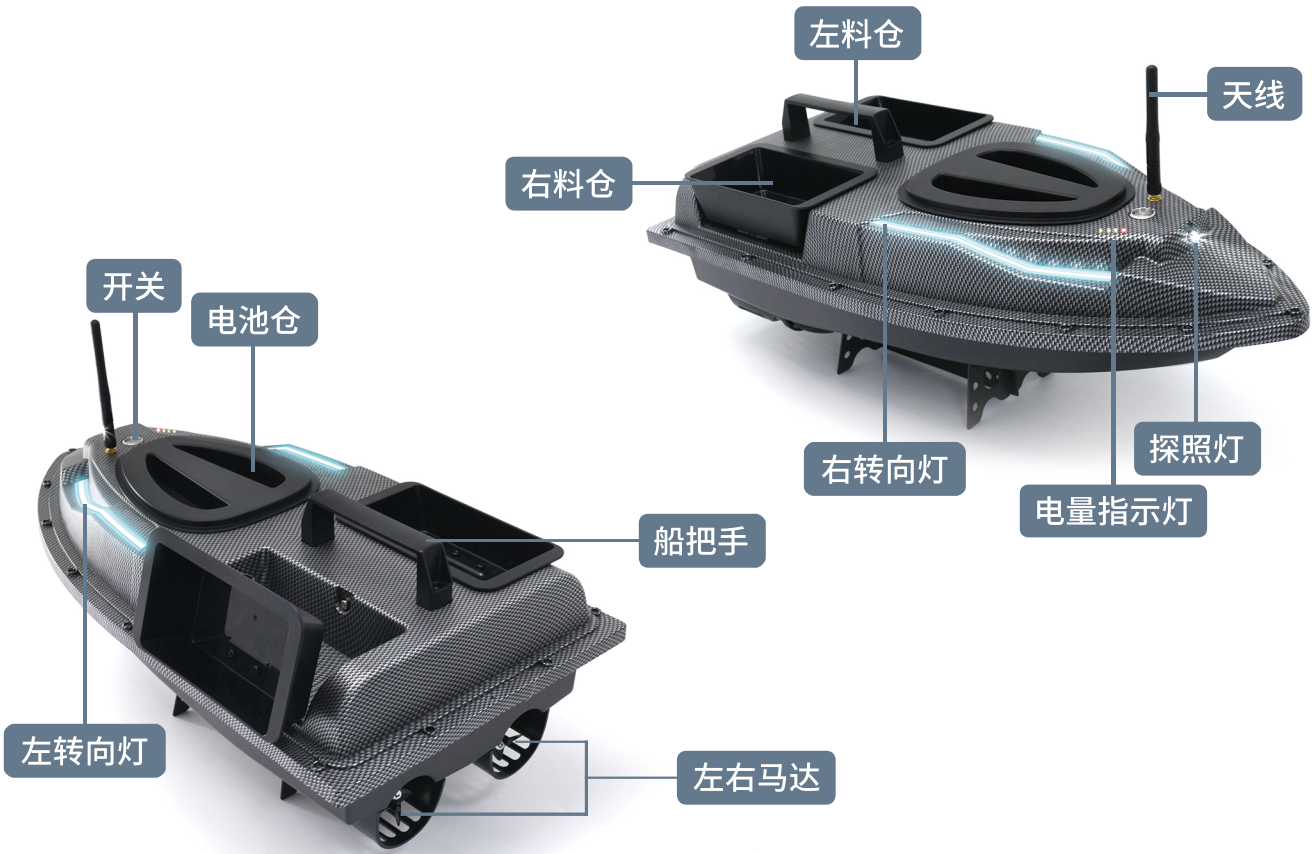
08	GPS boat propeller switch automatically and the boat sail or return automatically	1.This situation occurs when the positioning original point is set.and the boat svstem detects the low batterv and fails to detect the sianal of the remote controller then return course automatically. 2.GPS signal is lost.There are two conditions for thissituation:one is the sur-rounding magnetic interference the other is too thick clouds in the sky.
09	The automaticreturn course of the GPS boat deviates greatly	1.It is normal for the GPS ship to deviate 10-30 degrees from the course of automatic return by positioning.If it exceeds this range,please kindly re-calibrate the boat according to the instructions. 2.It should be re-calibrate under the new environment.
10	GPS boat is turning in a circle	Place the boat on the flat around and re-match the boatand the remote controller. The boat will restore the gyroscope automatically when matching
11	The hoppers can not be opened	Press the silo that cannot be opened by hand, press the silo button on the remote control, and observe whether the solenoid valve of the silo can be smoothly extended or not. If it can be extended and retracted smoothly, check whether there is any thing matter in the card position, and clean it up, If the solenoid valve does not retract, the internal solenoid valve needs to be replaced.
12	GPS boat can not be calibrated on the water	1.Re-match the remote controller and the boat on the ground again. 2.The main board of the boat should bereplaced if the problem can not be solved after the code matching.
13	Remote controller display of the GPS boat flashes	Replace the battery of the remote controller

目录

TABLE OF CONTENTS

打窝船船体说明.....	01
遥控器按键说明.....	02
操作方向说明.....	03
遥控器显示器说明.....	04
使用前须知.....	05
使用前准备.....	05
GPS定位操作说明.....	06
遥控器其他功能说明.....	07
重要安全说明.....	08
注意事项.....	10
电池使用与充电说明.....	11
保养维护.....	12
打窝船常见问题解决方法.....	13

打窝船船体说明



遥控器按键说明

REMOTE CONTROL BUTTON DESCRIPTION



船的操作方向说明

左右转向灯:转弯时对应的转向灯红白灯交替闪烁。

① 将两个方向杆同时向上推动, 船体前进。



② 将两个方向杆同时向下推动, 船体后退。



③ 将左方向杆向下推动, 右方向杆向上推动, 船体左转。

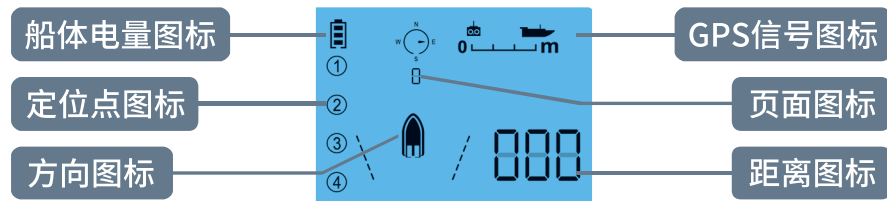


④ 将左方向杆向上推动, 右方向杆向下推动, 船体右转。



注意: 遥控器左右操作无功能

遥控器显示屏说明



船体电量图标: 该电池图标代表船体上电池的电量, 当电池图标满格时, 代表船的电量充足。一般带载运行时显示2格电量, 当电池图标剩余一格时, 代表船的电量较低, 需要及时更换电池或对电池充电。

注意: 运行时电量显示才准确

GPS信号图标: 屏幕上 的图标为GPS信号图标, 当出现这个图标时, 才可以进行校准和定位点储存设置。

距离图标: 屏幕上右下角的距离图标, 显示船离原点的距离和定点巡航功能下定位点间的距离。

方向图标: 遥控器上船的图标代表船行驶的方向, 船在行驶过程中, 如果船的图标位于中间位置, 代表船无偏航。如果船的图标位于左侧, 则代表船在进行左转。如果船的图标位于右侧, 则代表船在进行右转。

注意: 在定点巡航和定速巡航状态下, 方向图标会左右来回显示, 代表船体陀螺仪在校准, 保持直行。

页面图标: 遥控器屏幕上的指南针下的数字代表为页面图标。遥控器屏幕总共有十个页面, 默认第一页显示的数字为0, 第二页显示数字为1, 依此类推。第十页显示的数字为9, 为最后一页。可按遥控器上的左翻页键和右翻页键进行翻页操作。

定位点图标: 屏幕上的①②③④图标为船定位点图标, 对应屏幕左侧定位点按键。按下定位点按键后, 在屏幕上会出现对应的数字图标。如按下定位点1键, 屏幕上会出现①的图标, 代表船在该位置存储为定位点。如当前页面定满点, 需定第五个点时, 则按翻页键, 翻页定点, 以此类推。



使用前须知

1. 使用前阅读完整的手册和安全说明；
2. 从包装中取出打窝船；
3. 撕开底部的保护膜；
4. 将天线安装到打窝船上；
5. 使用随附的适配器为电池充满电。当适配器的 LED 指示灯由红色变为绿色时, 电池已充满电；
6. 打开船的电池仓盖, 将充满电的电池连接到打窝船上, 盖上电池仓盖；
7. 开启打窝船；
8. 打开遥控器开关；
9. 打窝船准备就绪。

使用前准备

一、开机准备

1. 把船放置于平地, 先按下船的开关, 再拨动遥控器上的开关, 当遥控器发出“滴”一声时, 遥控器上的绿色指示灯常亮, 船上的转向灯常亮白灯, 表示遥控器和船体已经连接。
2. 当遥控器和船体匹配完成时, 推动遥控器上的操作杆, 检查船体两侧马达是否正常, 如果正常转动, 则可放入水面进行操作

二、校准



1. 遥控器屏幕上显示   m 的图标时, 用遥控器将船开出估测离岸7米远处, 确保周边内无障碍物。

注意:GPS信号搜索时长取决于周边环境, 一般为两分钟内。

2. 长按OK键再按下校准键(图1), 船进入自动校准状态, 船自动在水中旋转, 当校准完成后船停止转动。

注意:遇到有障碍物时, 按校准键退出校准。如遇到水波较大时, 会对船的校准造成影响。应待水面平静时再进行校准。

三、设置原点

GPS图标有显示   m 时, 才能操作定位点存储。当船校准完成后, 遥控器屏幕显示为第0页。建议船停在岸边作为出发点, 按紧遥控器的“OK键”再按一下定位点①键(图2), 此时遥控器屏幕①点的图标先闪烁后常亮, 此时的①点默认储存为原点。原点设置完成后, 按此方式可设置储存其他定位点。

注意:设置原点后, 遥控器屏幕上显示的距离为船体行驶出去后和原点的距离。

GPS定位操作说明

定位点存储:成功设置原点后, 可将船行驶到指定地点时, 先按紧OK键+对应的定位点进行地点储存。当前定位点设置成功后, 显示屏上相应数字的先闪烁, 后常亮。便可将船开到下一个地方, 按照页面的顺序来设置新的定位点。最多可存储40个定位点[总共十个界面, 每个界面可设定4个定位点, 每个界面定位点设置满了, 可翻页设置新的定位点(图3)]。

注意:当关闭船电源时, 清除已储存的定位点。



图1



图2



图3

定位巡航:当设置好定位点时,选择所要到达的定位点,按下定位点键(图4)后船开始自动巡航,此时屏幕上显示的距离为两定位点间的距离,当显示距离缩短直至显示为0m时,遥控器发出“滴,滴”俩声,则表示船到达选择的定位点,并停止行驶。

注意:1.船到达定位点后,遥控器屏幕的距离显示会恢复为原点和船的距离
2.当船出现跑偏或跑的位置不对时,请重新校准。
3.如果船在巡航过程中想取消操作,长按对应定位点取消巡航功能

一键返航:按下一键返航键(图5),船会行驶回原点处(需要先设置好原点,此功能才能实现)。如若想取消一键返航的功能,则再按一键返航键,可取消船返航的动作

一键清除键:长按一键清除键(图6),清除遥控器上所有储存的定位点。

遥控器其他功能说明

灯光切换:按一下遥控器灯光键(图7),船头探照灯开始闪烁,再按一下灯光键,船头探照灯常亮,按第三次时则关闭探照灯。



图4



图5



图6



图7

定速巡航:船前进时,同时长按定速巡航键(图8),船会进入定速巡航模式,此时无需遥控器操作,船会保持前进状态。若需取消定速巡航模式,则短按一下定速巡航键取消。

注意:低电状态下,船无法进入定速巡航模式



图8

料仓键:按下左料仓键则左料仓弹起,按下右料仓键则右料仓弹起(图9)
注意:料仓弹起后需要用手将料仓按回原处

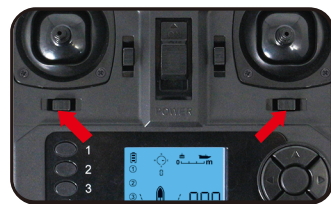


图9

电子围栏:满电状态下,船的距离最远可达500米。但当船处于较低电量时,遥控器会发出提示音,船无法行驶150米的范围外,避免船在低电量状态下无法返回的情况发生。当船体处于低电量状态时,遥控器上的电池图标只剩一格电,船会自动返航回到原点

失联返航:当遥控器电量低/自动关机/手动关闭遥控器时,船自动返航到原点。

遥控器低电提醒:当遥控器低电量时,遥控器发出“滴”的长鸣

重要安全说明

使用本产品时应始终遵循以下安全说明,以避免着火、触电或财产/人身伤害的风险。

01. 使用前请务必阅读完整的手册和安全说明；
02. 本产品包含敏感电子元件和零件，因此请小心地使用本产品；
03. 请勿将本产品置于阳光直射或阴暗潮湿的环境中；
04. 请勿在雷雨/闪电，下雨天气下使用本产品；
05. 抛钓线时切勿用本产品倒转。这样可以防止钓线缠绕住电机/螺旋桨；
06. 不要将船越过水生植物或其他障碍物，避免电机被缠绕住；
07. 建议在每次使用后对本产品进行维护，方法是打开船的电池仓盖，取出电池，打开电池仓擦干内部水珠。
08. 始终保持本产品的干燥和清洁；
09. 本产品通电时请勿清洗，本产品仍处于潮湿状态时，请勿接通电源；
10. 使用时建议将颈带系在遥控器上，以便挂在脖子上；
11. 遥控器只能使用认可的 AA 电池 (1.5V)；
12. 切勿将电池完全放电；
13. 使用本产品时，请将电池充满电后再进行使用；
14. 请使用提供的适配器给电池充电；
15. 请勿将本产品与电池长期通电；
16. 如果船电量指示灯四个 LED 只显示三个 (或少于三个)，请立即更换新电池或将电池取出进行充电；
17. 当您不使用本产品时，请将电池从船体中取出；
18. 不要留下任何可能被意外绊倒或拉扯的电缆；
19. 请勿在高温环境下使用本产品；
20. 请勿跌落，损坏产品；
21. 充电前，请检查充电器是否损坏，如有损坏请联系供应商；
22. 请使用官方零件进行更换；
23. 如果产品出现故障或停止工作，请停止使用并联系供应商；
24. 将包装材料和细小配件放在儿童接触不到的地方。

SAFETY WARNING

安全须知

注意事项

我可以航行多长时间？

每个电池可以航行2小时。天气会影响每个电池的工作时间。大风等天气条件会影响电池电量，使打窝船会消耗更多电量。

范围有多远？

遥控器与船的距离最大为 500 米。然而，环境因素对距离有很大的影响，因此我们不建议使用船航行此距离。

遥控器无法控制船？

关闭遥控器和打窝船电源，需要重新将打窝船和遥控器进行对频。把船放置于地面，先按紧遥控器上的对频键，再按下船的开关，接着拨动遥控器上的开关 (图10)，当遥控器发出“滴”一声时，遥控器上的绿色指示灯常亮，船上的转向灯常亮白灯，表示遥控器和船体已经连接。

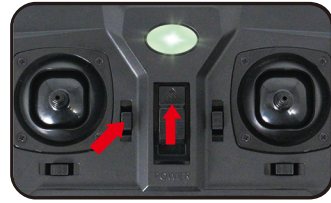
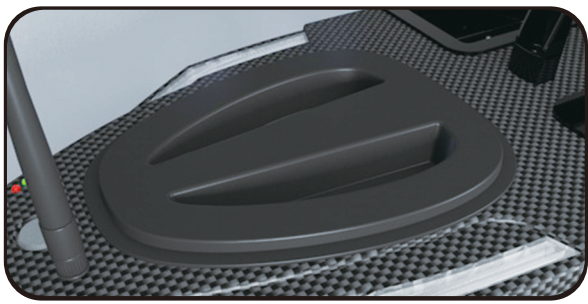
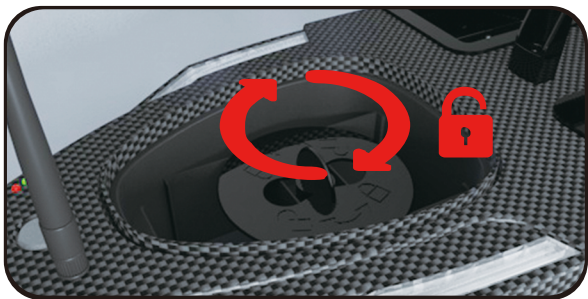


图10

电池使用与充电说明



主机电池 (标配)
本机内置一组电池



电池的取出和固定
顺时针旋转即可打开并取出电池, 将固定架按压到位后逆时针旋转即可固定



连接电源
使用时将电池仓接口对接即可



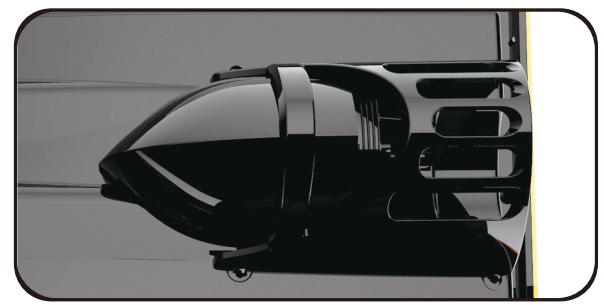
电池充电接口
把电池接上充电器即可充电
红灯: 充电中 绿灯: 充电完成

保养维护

遥控器
在长时间不使用时请取出电池。

马达
每次使用完后要检查马达是否有缠绕杂物

船体
1、使用完毕后请擦拭水分保持船体的干燥和清洁。
2、电池在长时间不使用时, 请取出并充电存放。
3、请勿靠近高温物体。
4、不使用时, 请将打窝船存放起来, 以防沾尘土。



充电充不进去怎么办:
1、先检查充电器是不是正常工作 (图11)。
2、充电器连接充电口是不是插到位, 在检查接口处接触正不正常 (图12)。



图11

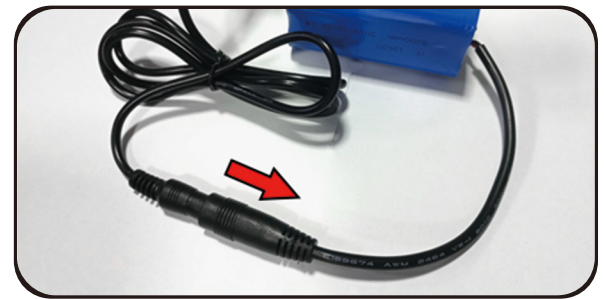


图12

打窝船常见问题解决方法

问题点		解决方法
01	不开机	1.检查船身和遥控器电池连接是否正确。 2.检查船身上的开关和遥控器开关是否打打开。 3.给电池充电或更换电池。
02	遥控距离短	1.检查船身天线有没有拧到位。 2.尝试更换新的电池 3.更换天线。
03	单边螺旋桨不转	1.如船在陆地上,其中一个马达时转时不转,是正常现象,因为产品里面的陀螺仪在陆地上无法校准,必须在水面才能工作。
04	船跑偏航	1.检查螺旋桨有没有杂物缠绕。 2.把船放陆地上,必须是平地,然后把遥控器和船重新对频。
05	船和遥控器能开机但是控制不了	1.把遥控器和船重新对频。
06	船开机后自动控制船功能	1.检查遥控器的按键有没有卡件。 2,如没按键卡住大部分是遥控器有进过水,得更换遥控器。
07	GPS船没定位	1.首先船必须得在户外开阔地方才会有定位信息,在房子里面是搜索不到卫星定位的。 2.GPS定位时间,从开机到显示定位时间是两分钟内,GPS搜星需要耗时两分钟左右

08	GPS船螺旋桨自动开启,和船自动行驶或返航	1.这种情况出现在有设置了定位原点情况下,船身系统检测到电池电量低和检测不到遥控器的信号而自动执行返航。 2.GPS信号丢失,这种情况出现的条件有两种一是周围的磁场干扰,二是天空上的云层太厚
09	GPS船自动返航走的线路偏离大	1.GPS船在利用定位自动返航路线跑偏10-30度是正常,超过这个范围,请把船按说明书说明重新校准。 2.在每次更换新的使用环境都要校准一次。
10	GPS船返航转圈	1.把船放在平地上,将船和遥控器重新对频,在配码时船会重新自动恢复陀螺仪
11	料仓打不开	用手按打不开的料仓,按遥控器的料仓键,观察船上料仓电磁阀是否能顺利伸缩。如果可以顺利伸缩,查看卡位处是否有异物堵塞,若有异物则清理干净。如果电磁阀无法伸缩,则需要更换内部电磁阀。
12	GPS船在水面无法校准	1.重新在平地上和遥控器对频 2.对频后还无法解决就需要更换船主板
13	GPS船遥控器显示屏闪	更换遥控器电池