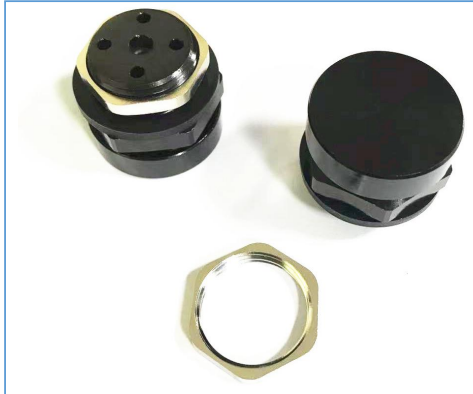




Datesheet of Milvent AL Vent Plug

MIV Metal AL Vent Plug

Actual Picture



Performance:

- >Block ingress of wide range of contaminants,from rain and insects to dirt,dust,sand and other,particulates,best to use under the tough environment.
 - >IP 67,IP68,IP69K and -40° C to +125° C operating temp.range
 - >Installing on the side/Vertical face of enclosures is effective for outdoor use.
 - >Breather plug with aluminum cover and specially-designed internal venting filter inside,The filter venting always make the pressure equilibrium and protects your enclosure.Good application at Gearbox,or Tank,Container.,etc.
- It is especially recommended for Battery Pack EV,Gearbox,Powertrain,Oil Tank,Chemcial Container,Seal Enclosure with battery.,etc.

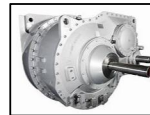
Application:



EV Battery Pack



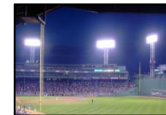
Powertrain



Assembly

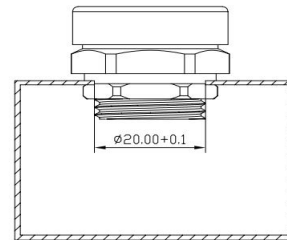
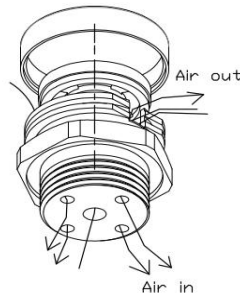
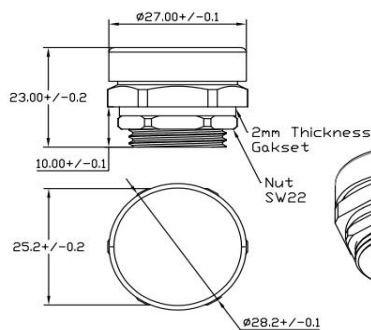


Gas Tank





Lighting

Dimensions



Assembly:
Can be assembled at side or vertical of Enclosure

Part No.	MIV-20MAB	MIV-20MAS	Enviromental performance
Thread Type	m20X1.5-10		IP66,IP67(Immersion:1meters/30min.) IP68,IP69K -40°C~+125°C High temperature,High impact test.
Typical Airflow ml/min(dp=70mbar)	>3000		
Body and Cap Material	 AL with Black Color	 AL with Silver Color	
Torque Data	0.8Nm		
Gasket	Black Silicone Shore A 60		

Other sizes please check with us.We can OEM any sizes for you rapidly .

www.milvent.com; milvent@milvent.com

+8618218369198